

MARRICKVILLE HERITAGE SOCIETY NEWSLETTER

vol.1,no.2

july'84

Mark down in your calendar the 4th Saturday of each month which will be our regular meeting date: 10.30 a.m. (finishing by 12.30p.m.) in the Aldermens' Room, Petersham Town Hall



OUR NEXT FUNCTION: A FIELD DAY!

A visit to Elizabeth Farm, Granville.
Meet at the Petersham Town Hall,
10.30 a.m. (we'll be back by 2.30p.m.)
Bring some lunch, or purchase something from the kiosk, and join our picnic. If you need transport, ring Chrys (569-1816 office hours). Entry costs to Elizabeth House are: adults, \$1.50, pensioners and children, \$0.50.



A QUARTERLY EVENING MEETING:

Since some people can't attend on Saturday mornings, we've decided to have a quarterly evening meeting starting on Friday 28th of September at 7.30p.m. at our usual meeting place. There will be a discussion on 'Resources for writing local history'.

FUTURE PROGRAMME

(to be confirmed)

August 25

A discussion of the
'Greek Experience in
Marrickville'

September 22

A visit to Vaucluse
House

October 27

Guest Speaker-Nick
Vine Hall from the
Australian Society
of Genealogists.

November 24

Finding out about our
locality through the
council archives.

OUR LAST MEETING . . .

- Chrys Meader introduced us to the rich store of material (files, pictures, slides and index cards) in our Local History Collection at the Marrickville Library.
- We heard the story of how Unwin's Bridge, Tempe, came to be built. It was built over the Cook's River (it now spans the railway) because prominent landowner, Frederick Wright Unwin had his house on one side of the river and his stable and horses on the other. He secured convict labour to build the bridge.
- Our Marrickville Greek-born population amounted to just 4 males and 1 female in 1891 whereas there were some 319 German-born males and 243 females here then. A Library paper on the growth of the Greek community in Marrickville shows that the 1960's was the decade of greatest Greek migration to Marrickville: the Greek-born population jumped from 3,065 in 1961 to 13,171 in 1971. The total dropped to 7,973 in 1981.
- Not everyone will be aware that there was a Petersham cemetery from 1863-84, it used to surround St Thomas's Church, Lewisham. The remains, headstones and records were moved to Rookwood after a section of the cemetery was resumed for railway extensions. Lewisham Hospital was built on another part of the cemetery. The first Catholic Archbishop, Polding, was buried there but when the cemetery closed his remains were transferred to St. Mary's Cathedral.
- You may not believe it but there is an elephant buried in the Tempe tip. The elephant, which came to Sydney with a circus, went beserk and fell in the Cook's River and drowned.
- There have been three histories written of Marrickville (in 1912, 1922 and 1936), one of Petersham (1948), but nothing yet on Tempe and St. Peter's. Is there a scribe in that area who will put pen to paper in time for 1988?

XXXXXXXXXXXXXXXXXXXXXXXXXXXX

FEATURES . . .

STREETS

WARDELL ROAD (Fisher and Fraser Streets).

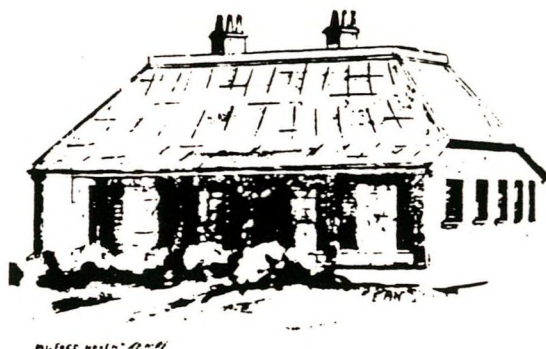
Wardell Road, one of the main north-south roads which cuts across the Municipality, owes its name to Dr Robert Wardell (1793-1834), pioneer of our area, lawyer and journalist. Wardell didn't arrive in the colony until 1824 but in an eventful decade he managed to be involved in two duels, acquired 2500 acres in Marrickville, edited the 'Australian' newspaper, and eventually got killed by three escaped convicts near Cook's River. Being so active, he never found time to marry. His property ran from Petersham (where his house stood) all the way to Cook's River and was much admired for its stands of timber and good quality wheat grown on 25 acres which produced 500 bushels of wheat in 1830. Several other streets (Fisher and Fraser Streets, Petersham) are named after his niece and two nephews.

HOUSES

MILFORD HAVEN,

125 Unwin's Bridge Road,

Tempe



Milford Haven was built c 1858 for William Wells, a publican who conducted the Lord Nelson hotel at Miller's Point. Architecturally it is an archetypical Australian colonial bungalow of the very best quality. Formerly known as Leinster Hall and Nelson Lodge, the house is 5 bays width with end box rooms to its front and rear verandahs. The large roof of the vernacular form is covered in slate and supported at the verandah on cast iron pilasters. In recent times the house has been converted into flats but the alterations have only changed the building in minor ways.

You can buy a photo of Milford Haven from the Library for just 20c



r Bob Thompson of Tempe (55-5352) is collecting old maps of the
s St Peter's/Tempe area in particular and the inner city in
v general. He is building up a changing pattern of land use in
p our area. Can anyone help?

The Sydney City Council has produced a pamphlet on 'Guidelines for Renovating Terrace Houses' and it's free. Contact the City Council.

A cyclethon in the Petersham/Stanmore area, organised by the Petersham Residents Group and the Bicycle Institute of NSW will be held on Sat. 13th October and will raise funds for Lewisham Hospital. Watch future Newsletters for more details.

Family History—from the first Australian £5.0.0 note. Yes, Christopher Henry Lenehan and his family (who lived for many years in Silver and George Streets, Marrickville) ran the Sanatorium Hotel on the water's edge at Brooklyn, NSW in the 1890's. It's this hotel which is featured on the old note, in the foreground of the Hawkesbury River scene. Mrs Lenehan was Maria Louise Gannon from Cook's River.

The information about this note came from an authority on the subject, Michael P. Vort-Ronald of 6 Fisk Street, Whyalla Norrie, S.A. 5608. You may like to contact him if you wish to donate or exchange cheques and notes.

Our Magazine.

We intend to bring out an occasional magazine on Marrickville history. The first issue, planned for November, will feature articles on the pottery industry, cemeteries, pubs, clubs and other subjects. Join our society now to make sure you receive a copy. It's only \$7 for individuals, \$10 for households & institutions and \$2 for students and pensioners.

New Members

Edna Andrews, Terry & Maree Blanchard, Warren Duff, Rita Glass, Mary & Margaret Harte, Robert Moore, Gary Nicholls, Tom Pavlikis, Jan Pittard, Jessie Ryan, Margaret & John Shaw, Robert Thompson.

Newsletter Committee—Anne Carolan, Richard Cashman (Editor), Chrys Meader, Gregory Robertson (Layout). Contact us through Chrys (569-1816)

