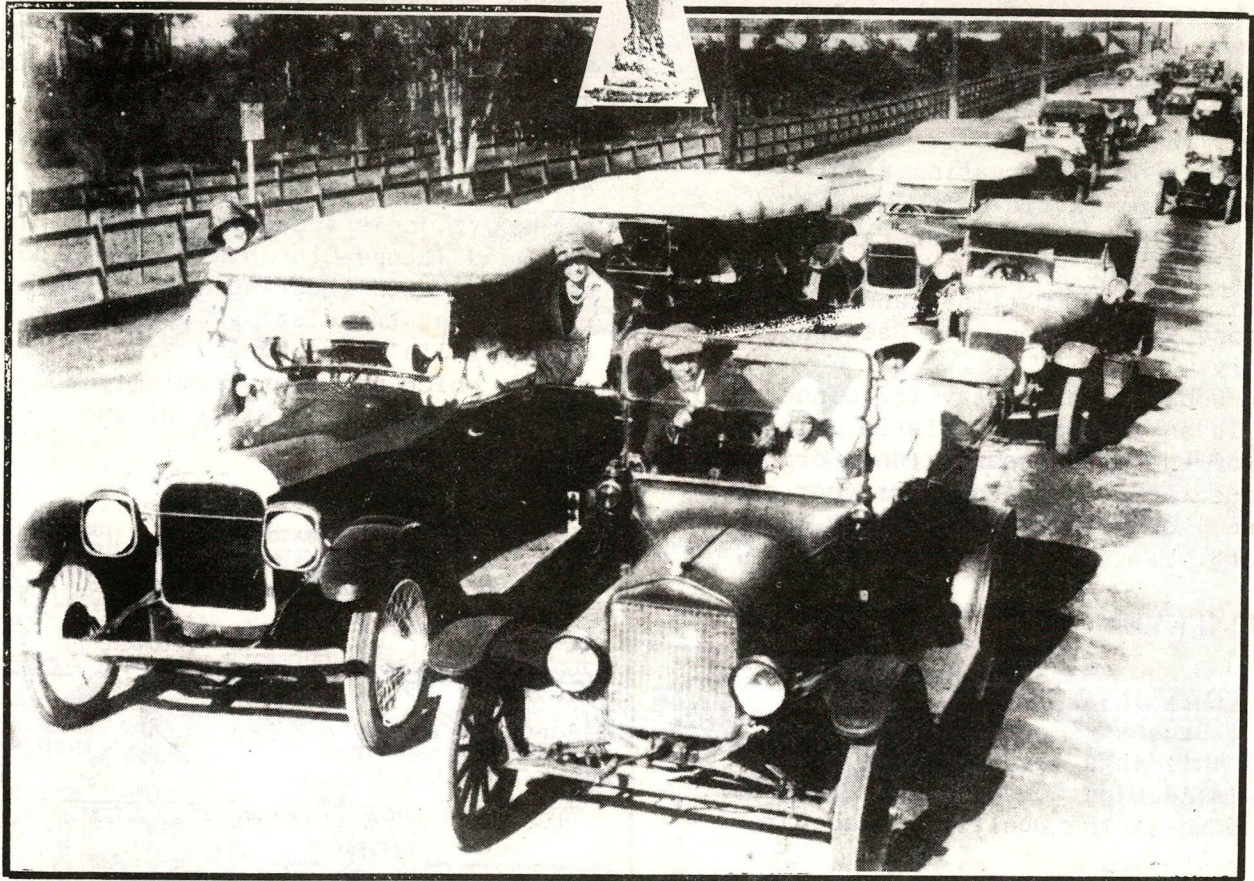


MARRICKVILLE

HERITAGE SOCIETY

Covering Dulwich Hill, Enmore, Lewisham,
Sydenham, Tempe and parts of Newtown,

Marrickville, Petersham, St Peters, Stanmore,
Camperdown and Hurlstone Park.



OUR NEXT MEETING ANNUAL GENERAL MEETING

**AMENITIES ROOM PETERSHAM TOWN HALL
SATURDAY JUNE 25, 10.30AM**

The outgoing executive looks forward to members attending the Annual General Meeting to hear what has been achieved over the past year and to comment on future directions. Several major reports on the society's activities will be presented.

It is the executive and the committees of the society who plan the activities, write the letters, guard our heritage and document the history of the area - keeping the society a going concern. They deserve your support on the day.

Elections will be held for the executive for the coming year. All positions will be declared vacant and nominations are called for the following positions:

Is this the rush to get to the society's Annual General Meeting? Not exactly. It's a procession to mark the reopening of Parramatta Road in April 1921.

president, senior vice president, junior vice president, treasurer, secretary, assistant secretary, and three committee members. Nominations may be made in writing prior to the meeting or on the day.

At 12.30pm join the new executive for lunch in nearby Maundrell Park (weather permitting). Members are asked to bring a plate of sandwiches. The Society will provide champagne and soft drink. Shirley Hilyard, President.

REMINDER TO MEMBERS

Membership fees are due on July 1. The society appreciates your past support and looks forward to your continued membership. - Lindsay Smyth Treasurer.

COMING EVENTS HERITAGE 8 LAUNCH PARTY

WEDNESDAY JULY 13, 6.30PM-8PM
WHITE COCKATOO HOTEL,
30 TERMINUS ST, PETERSHAM

Members are invited to join authors, advertisers and other guests for drinks to launch *Heritage 8* in the bistro bar (nicknamed Platform 4) of the White Cockatoo Hotel. Petersham Railway Station, which is opposite the hotel, is the subject of conservation architect Peter McLaren's article in *Heritage 8*. Other articles include *Desperately Seeking Diana*, a history of Diana Pottery, by Geoff Ostling, and a look at tombstone inscriptions at Camperdown Cemetery.

If you would like to stay for dinner there is an inexpensive bistro. Please book for the drinks party (some drinks complimentary), or dinner (at your own expense), or both. Phone Shirley on 569.1768.

COMING EVENTS

SATURDAY JULY 23

Francis Greenway - A Walking Tour of his Sydney buildings, led by Clive Lucas, Sydney's leading conservation architect, concluding at the Obelisk in Macquarie Place.

SATURDAY AUGUST 27

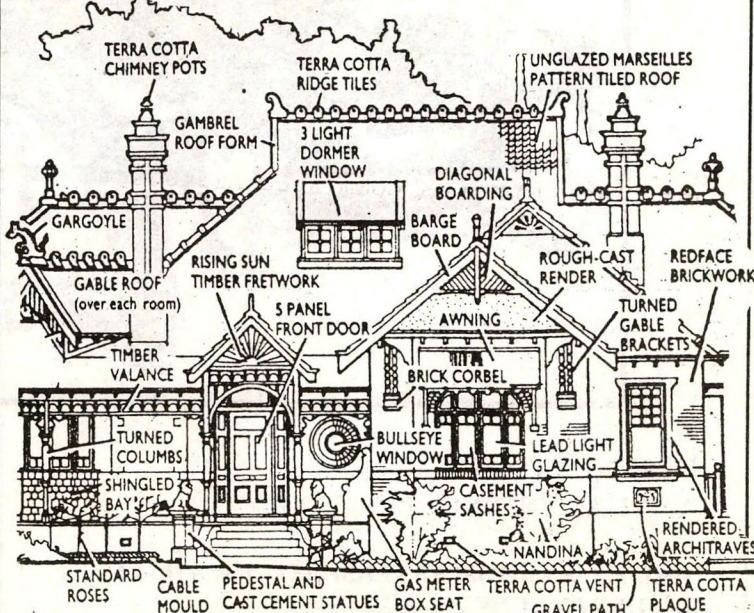
Hatches, Matches and Dispatches, a look at the humorous side of the Births, Deaths and Marriages Registers, presented by society member Shirley Doolan.

BAKERY MUSEUM OPENS

President Shirley Hilyard and two society members were guests of Hurstville Historical Society when it moved into new headquarters on May 20. The Centennial Bakery Museum is really a shop and two houses built in 1888. The original bakehouse which stood behind the shop has since been demolished. Hurstville Council has spent a considerable amount of money refurbishing the old buildings but unfortunately the original interior fabric of the building has been removed. The new museum displays local history artefacts and historic photos and is the result of much hard work and planning by the Hurstville Society. Congratulations.

OUR LAST MEETING DOING THE FEDERATION WALK

Trevor Howells, author of *Towards the Dawn*, the definitive work on Federation architecture in Australia, wishes he had known about Marrickville's Federation houses before he wrote his book. Over the entire breadth of Australia he had not seen green tuckpointing until Saturday May 28 when some 50 members joined him on a walk through Marrickville's best Federation precinct. The walk took in Hastings, Livingstone, Anderton and David Streets and included a look inside the homes of Connie and Carmel Cloran, and Paul and Joanne Cloran. Thanks to both families. With great authority Trevor pointed out the distinguishing features of Australia's "national" architectural style, which was overwhelmingly domestic and has become "the glory of the suburbs".



Drawing by Ian Stapleton.

The historical notes used on the walk were prepared by Chrys Meader. Trevor's book *Towards the Dawn*, published by Hale & Iremonger, is available from society meetings for \$25 (rec. retail price \$29.95).



OBITUARY

It is with sadness we report the sudden death of society member Anne Hunt, of Enmore. The society offers condolences to her family and friends.



THE SAGA OF THE STEPS

Readers will be aware of the Society's involvement in the reconstruction of the Petersham Station footbridge. One of the items which has been of particular concern to the Society's Heritage Watch and Clasifications Committee has been the northern stairs. The original cast iron treads of these stairs were replaced some years ago with hardwood planks. The existing timber treads show some wear and naturally it would be good to see the original iron treads reconstructed. Accordingly we were concerned to see the remaining cast iron landing components had been replaced with plywood sheeting when the stairs were being prepared for painting last April. The landing component featured the bridge manufacturer's name in bold bas-relief on the semi circular nosing:

HAWKSLEYS PATENT STEP J WESTWOOD JUN BOW LONDON E.

To lose this component would mean losing the opportunity to reproduce the treads at some time in the future. The society contacted State Rail heritage architect Stuart Sharp, who agreed that the landing components were a most important part of the structure and should be preserved. A follow up call to State Rail engineer Robert Davey, indicated the missing pieces had been stored on site near the bridge.

Society president Shirley Hilyard and I spent a considerable amount of time

The original cast iron nosing showing the manufacturers name on the northern stairs of the Petersham Railway footbridge. The nosing was recently rescued by the society after removal by State Rail. Photo: Geoff Ostling.

searching around the bridge, but to no avail. By this time we had visions of the landing pieces going the way of the treads. After another worried call to Mr Davey he agreed to chase the pieces officially and finally tracked them down to a contractors workshop in Botany. Apparently State Rail had decided it would be too difficult and expensive to provide a good surface for the iron landing and it was to be replaced in hardwood to match the treads. They had, however, acknowledged the significance of the parts bearing the manufacturers name and proposed to cut the nosing off, and to fix this iron strip, resplendent with manufacturers name to the new hardwood landing! Fortunately, this was also found to be too difficult, and the landing components remained virtually intact until tracked down by Mr Davey. The society has now proposed to State Rail that we take charge of the iron restoration work by seeking Government funding to have a mould made from the original component bearing the manufacturers name. If we were successful, we could make castings to reproduce the missing iron treads. Providing State Rail agreed to provide the labour, we could reinstate all the missing iron components of the stairs. **Peter McLaren.**



EDITOR BAILS OUT

The society's monthly newsletter has been edited by Judith Matheson for four of the past six years, a record which must stand alongside Brian Lara's recent 501 not out at Edgbaston. The newsletter has seen many issues aired during her tenure -- the disappearance of the Town Hall lions being one of the most newsworthy. Her sense of news values and professional approach to editing the newsletter have stood the Society in good stead, as the newsletter is, for many members, their main contact with the Society. She leaves to cut a swathe through the museum industry, and intends to devote whatever hours are left to her family. We wish her well. - Shirley Hilyard

A FAREWELL

After four years on and off as Newsletter Editor I am resigning to concentrate on my university studies. I have served on the executive in several capacities since I joined the society in 1987 (including a year as president) but I have enjoyed the job of Newsletter Editor most of all. There is ink in my veins, I suspect. I would like to thank members for their co-operation and support over the years. - Judith Matheson.

ABORIGINAL HISTORY IN MARRICKVILLE

Marrickville Council is proposing to undertake a history of the Aboriginal people in the Marrickville area. This will take the form of a photographic exhibition and accompanying catalogue. Likely sources of funding are the Royal Australian Historical Society and the Aboriginal and Torres Strait Islander Commission. To be eligible for a RAHS grant the council must submit its proposal through an affiliated organisation and we have agreed to submit council's project under the auspices of Marrickville Heritage Society. It is hoped that the project will foster a greater understanding and appreciation in the community of the rich and diverse history of Aboriginal people in the area.

HOLY TRINITY KELSO OPENS ITS REGISTERS

A new source of information for genealogists with ancestry in the Central West has recently become available through the church registers of Holy Trinity at Kelso, 3km east of Bathurst. From 1826 until 1849 it was the only church west of the Blue Mountains and up until 1856 some information held here is not recorded (or hard to find) elsewhere. All the old records, once encribed in meticulous copperplate, are now entered on computer and can be accessed quickly and easily. There are more than 44,000 names on the database covering baptisms, marriages and burials. searches of the registers can only be made by completing a post-free Search Request Card. Send a self addressed envelope to HTK Historical Records, Box 1177, Bathurst NSW 2795. You will receive four search request cards and a brochure. Each name search costs \$30 including the first 15 minutes plus \$4.50 for each additional 15 minutes.



HOW TO JOIN THE SOCIETY

Membership is \$12 for individuals, \$18 for households and \$6 for pensioners. You will receive a monthly newsletter (except in January) and the Society's annual Journal Heritage. Subscriptions are valid for the Society year starting July 1. Regular meetings are held on the fourth Saturday of each month. Write to P.O. Box 415 Marrickville.

SHRUBS AND TUBS GARDEN CENTRE

130-136 Canterbury Road
Petersham • Tel: 560 3884

LEICHHARDT GARDEN CENTRE

346-350 Norton Street, Leichhardt
(Lilyfield Road end of Norton St)
Tel: 560 0889



Old Fashioned Climbers and Roses
Cottage Garden Plants
Camellias, Azaleas
All Herbs
Terracotta Pots, Lattice
Everything to keep your garden healthy