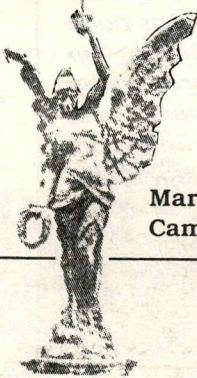


MARRICKVILLE HERITAGE SOCIETY

Covering Dulwich Hill, Enmore, Lewisham,
Sydenham, Tempe and parts of Newtown,

Marrickville, Petersham, St Peters, Stanmore,
Camperdown and Hurlstone Park.



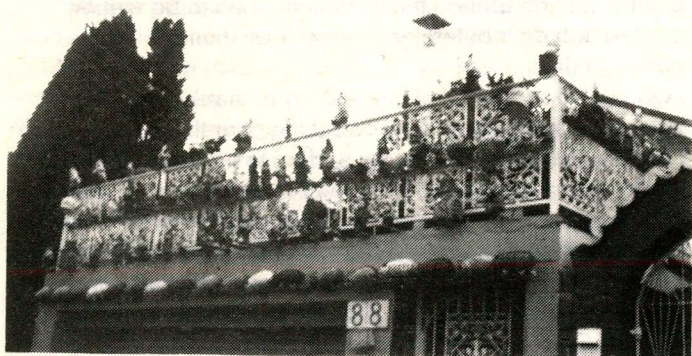
OUR NEXT MEETING GARDENS OF MARRICKVILLE - GREENING OUR AREA

**SATURDAY SEPTEMBER 25 10AM
MEET AT PETERSHAM TOWN HALL**

Take a Spring tour through some of the more interesting gardens in Marrickville, especially those with a heritage bent. Our modern comfortable bus will travel around the municipality visiting Marrickville garden competition entrants and prize winners, from tiny planted areas to large heritage gardens. We will also visit a primary school where pupils have created a peace playground (for quietness) and a rainbow garden.



We will be visiting the newly restored Dibble Ave duck pond, and spying gnome city and wombat walk in The Warren. Bring your camera, there will be plenty to photograph and the tour will conclude at the Welch/Gard family's heritage rose garden in Marrickville. Lunch and refreshments will be served at noon approximately and the bus will return to Petersham Town Hall at 1pm. The cost including lunch is \$5. Please make a booking with Sue Miller on 519 9980 or 565 7600.



*Gnomes and wombats in The Warren, Marrickville.
Photo: Sue Miller.*

SPRING GARDEN TOUR RAFFLE

We have three great prizes in our spring garden raffle. A grape ivy (indoor plant), and geraldton wax (both donated by Marrickville Council) and a book *Flowers & Plants of New South Wales and Southern Queensland*. Tickets are available at three for \$2 from Sue Miller or on the day of the tour. The raffle will be drawn at the end of the tour on September 25.

CALENDER OF EVENTS

**SATURDAY OCTOBER 23
TEDDY THE JAM MAN**

Please note a change in our calender of events. The advertised guest speaker for this meeting, porcelain expert Phillip Davis, is unable to attend. In his place we have Chris Pratten, former Environment Director of The National Trust, who will speak and show slides on the life and times of H.E. Pratten, cordial maker, jam manufacturer, fish canner, timber miller, gold and tin miner, Mayor, Minister for Trade and Customs and sometime Chairman of Directors of the Stanmore Preserving Co.

SATURDAY NOVEMBER 27

Guest speaker Chrys Meader, Local Studies Librarian is continually updating and adding to the collection on Marrickville. With her enthusiasm for her subject, this will be a fascinating talk with slides.

ROTARY HERB AND GARLIC FESTIVAL

September 11-12, 10am-6pm, Mackey Park, Marrickville. MHS is taking a stall on Saturday only. Donations of goods for sale - plants, jam, bric-a-brac - and people to help on the day would be appreciated. Phone Shirley on 569-1768.

THE CHANGING FACE OF NEWTOWN

The Newtown Town Square project is currently under way at the intersection of King Street, Bedford Street and Australia Street, Newtown. The area has been neglected in recent years but in 1922 when the top picture was taken it was teeming with people during the Newtown Jubilee celebrations. Photo: Local Studies Collection, Marrickville Library. The bottom picture, taken over 70 years later in September 1993 from the offices of the Newtown Tramway markets, shows how remarkably intact this commercial streetscape has remained. Photo: David Hilyard.



VOLUNTEERS NEEDED - HELP SAVE OUR HERITAGE BUILDINGS

Rob Muir, Chairperson of the Heritage Watch and Classifications Committees is looking for volunteers. If you are interested in the built environment of your suburb and would like to help us in our efforts to identify and preserve significant buildings and other items of heritage in the municipality, then contact Rob on 569 7164. The committee meets once a month and conducts regular excursions to identify and inspect items of heritage interest.

OUR LAST MEETING THE IMPORTANCE OF BEING CONTEMPORARY

Contemporary design in the 1950s was the topic of our last meeting. Guest speaker Judith O'Callaghan, senior curator of arts and design at the Powerhouse Museum, explained the major design trends of the postwar domestic environment with five maxims borrowed from Margaret Lord, one of the best known interior designers of the day. Comfortable and convenient to use; space saving; labour saving; beautiful to look at; and cheap enough for everybody; became the catchphrases of 'good design' in the 1950s.

Judith also showcased the work of some of the best Australian designers of the decade including Grant Featherston's contour furniture, which was particularly popular and has recently been revived; Clement Meadmore's metal furniture and lamps; Douglas Snelling's modular furniture and webbed chairs; and the Fler range of lounge furniture for TV viewing.

The meeting finished with Society members displaying their own '50s treasures. Geoff Ostling's collection of locally made Diana pottery, demonstrated one of Marrickville's contributions to '50s design.

PUBLICATIONS REPORT TO ANNUAL GENERAL MEETING 1993

The Publications of the Society are a major part of its work. For many members, especially, those who don't live in the area, these provide the only contact - and a very important one.

NEWSLETTER

Every month except January members receive a copy of the Newsletter. Most members probably don't realise what's involved in getting the latest information out! There's a fairly tight deadline - the Newsletter has to be written, printed and distributed by a network of 'runners' within about 10 days.

I would like on behalf of the Society to thank everyone involved - Judith Matheson for taking over the editing when I have been away; Shirley for adding to her responsibilities as President the job of Newsletter delivery; Mabelle and Lindsay for coordinating the runners, and the hard-working runners themselves: Mary Tait (who also does the postals), Brian Nugent, Anne Cherry, Lu Bell, Ingrid Paling, Lindsay Smyth, John Blattman, Tony Deguara, Barbara Gibbons, Pamela Stewart, Geoff Francis, Janet Kossy, Claire Herscovitch, Fred Ellis, John Sawkins and Shirley Hilyard. Finally thanks to our printers Aviweb of Glebe and to our advertisers Mary Reibey Gallery for the first half of the year.

and our stalwarts, Petersham and Leichhardt Garden Centre. Do please go and buy a plant from them.

A Newsletter is only as good as its contributors and I have been delighted at the increase and range of contributions coming in from members. I am sure that everyone has enjoyed some of the recent contributions such as the Ravenscroft Cake Shop by Joan Francis and Robin Hood's Grave by Richard Blair. Thank you to all contributors - Joan, Richard and all the others - but especially to Shirley Hilyard and Geoff Ostling who have been the stalwarts.

JOURNAL

The flagship of the Society is the journal Heritage. This year we are pleased to have been able to reprint the first two issues, with a new cover and some additional photos. Judith Matheson produced this and the final production (with layout by Gay Kalnins of Propagooose and printing by Aviweb) is excellent. Even if you already have Nos 1 and 2, it is worth buying the reprint as well. If you are a new member of course you will want the complete set! Heritage 8 is currently under way but unfortunately it wasn't completed in time for the AGM. Again we have a set of fascinating articles: Ken Haylings on the history of the Petersham Boy Scouts - a very entertaining account of the Scouts movement and how it came to Australia (Petersham was the first troop); Peter McLaren on Petersham Railway Bridge; Mary Casey on Camperdown Cemetery; Mandy Jean on being a Heritage Adviser and Geoff Ostling on

Diana Pottery. The success of Heritage 7 has resulted in a good response from many of last year's advertisers so we expect to be able to produce 8 very economically. Finally the Society received a \$300 grant from the RAHS to index the journal, and this is now underway by Lyn Beauregard of Library Locums. This will make the journals more accessible to researchers. We have not yet decided how to publish this.

AMY NEEDHAM AWARD

Established by Verona Rothwell in memory of her mother Amy Needham, this award is aimed at encouraging local history research and writing among young people. We have set up an ad-hoc committee and are liaising with high schools in the Marrickville Municipality about the possibility of tying this in with the new history syllabus.

FAREWELL

Because my work takes me out of Sydney regularly, I have found it very difficult to produce the Newsletter to schedule over the last few months. I am therefore standing down as Newsletter editor - with regrets because it is great fun and I have met a lot of interesting people in the process. I would like to personally thank all the people I mentioned earlier - because their hard work made my task easier and more satisfying. I am however continuing with Heritage 8 so I hope still to be able to contribute something to the Society. Thank you.
-Jeannette Hope



The Golden Barley Hotel, the best preserved Art Deco pub in the Municipality. Photo: David Hilyard.

GOLDEN BARLEY HOTEL

A year ago the Classifications Committee met at the Golden Barley Hotel in Edgeware Road, Enmore, for an inspection tour of the Municipality's best preserved Art Deco pub. Judith Matheson and David Hilyard first brought its merits to our attention with their Heritage 7 article **Art Deco Marrickville - Identifying Our Recent Past** and Shirley Hilyard followed up with a submission for classification to The National Trust. We are delighted to hear that on our recommendation the National Trust has now classified the building.

Designed by architects R.M. Joy and Pollitt in 1939 for Tooth & Co and built by L. Donlan, it is remarkably intact both inside and out. With its dominant corner position and Ocean Liner style, the pub is impressive from all street vantage points. The Classifications Committee considers it to be the best preserved Art Deco pub in the municipality and it is maintained in this condition by its enthusiastic publican Robert Lees. Well worth a visit if you haven't yet discovered its attractions.

THE ART DECO SOCIETY OF NSW 4TH ART DECO WEEKEND 8-11 OCTOBER 1993

The Art Deco Society has an exciting program of events for its 4th Art Deco weekend in October, including a cocktail party at the Friend in Hand Hotel, Glebe, a Discovery Walk to see Sydney's unique Art Deco heritage, a dinner dance at the Royal Automobile Club and a ferry trip to Luna Park led by architect Sam Marshall. For inquiries or phone bookings, call Jennifer on 498 3294.

STRANGER THAN FICTION

We have commended the restoration work of Joe Cernigoi, local resident and property developer, who has restored a group of Victorian shops at 576-580 Parramatta Road, Petersham. We are less than impressed by the proposed development on the old Rose's Emporium site just a few doors down in Parramatta Road, which is owned by one Izeoh Cernegoe. Joe tells us that the two are not related so please don't confuse them!

WELCOME TO NEW MEMBERS

Art Deco Society, Willoughby; Kathleen Chapman, Marrickville; Samantha Cole, Petersham; Katherine Coorey, Stanmore; Daphne Grange, Marrickville; Robert Hayes, Tempe; Margaret Hughes, North Strathfield; Robert Hutchinson and John Waterstreet, Petersham; Jeannette McHugh, Ashfield; James Moloney, Newtown; Caroline Plim, Petersham; Meric Reinhold, Westgate; Rockdale District Heritage Association, Bexley; Bettye Ross, Oyster Bay; Imelda Stuart, Stanmore; Jean Turner, Enmore; Anne Walter, Marrickville.

HOW TO JOIN THE SOCIETY

Membership is \$12 for individuals, \$18 for households and \$6 for students and pensioners. You will receive a monthly newsletter (except in January) and the Society's journal *Heritage*. Subscriptions are valid for the Society year starting July 1. Regular meetings are held on the fourth Saturday of the month. Write to PO Box 415 Marrickville 2204.

SHRUBS AND TUBS GARDEN CENTRE

130-136 Canterbury Road
Petersham • Tel: 560 3884

LEICHHARDT GARDEN CENTRE

346-350 Norton Street, Leichhardt
(Lilyfield Road end of Norton St)
Tel: 560 0889



*Old Fashioned Climbers and Roses
Cottage Garden Plants
Camellias, Azaleas
All Herbs*

*Terracotta Pots, Lattice
Everything to keep your garden healthy*