

MARRICKVILLE

HERITAGE

SOCIETY

Covering Dulwich Hill, Enmore, Lewisham, Sydenham, Tempe and parts of Newtown,

Marrickville, Petersham, St Peters, Stanmore, Camperdown and Hurlstone Park.



OUR NEXT MEETING TEDDY THE JAM MAN - EDWARDIAN INDUSTRIALIST

SATURDAY OCTOBER 23, 10.30AM
AMENITIES ROOM, PETERSHAM TOWN HALL
At our next meeting Chris Pratten, former Environmental Director of the National Trust, will speak about his grandfather H.E. 'Teddy' Pratten, a cordial maker, timber miller, gold and tin miner, mayor and Minister for Trade And Customs. At one time he was also chairman of directors of the Stanmore Preserving Company, which was established in Salisbury Rd, Stanmore, C.1907 in the building that now houses the Natural Floorcovering Centre.



H.E. Pratten

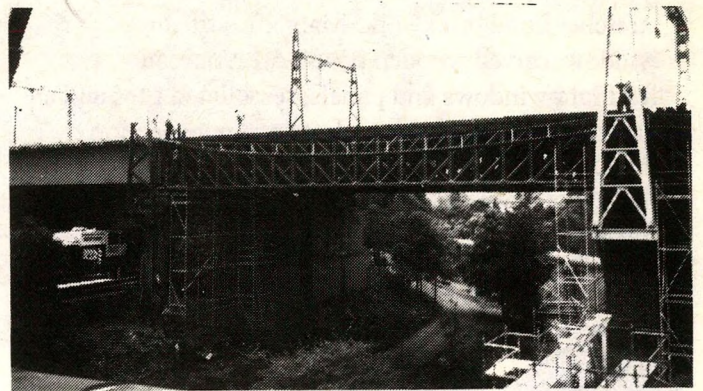
The company continued to operate there until 1914 when it moved to 31-35 Bridge Rd. Jam making and fruit preserving continued on this site until 1948 as the Peacock Jam Factory and the facade is listed in the Marrickville Heritage Study as a valuable contribution to the industrial streetscape.



DON'T LET THIS BE YOUR LAST NEWSLETTER

A final reminder to our members who have not paid their 1993/94 subscriptions. Please pay your membership fees as soon as possible or you may be deleted from our mailing list. The society has appreciated your support in the past and looks forward to your continued membership. Thank you. - Lindsay Smyth, Treasurer.

TROUBLED TRUSS BRIDGE AT LEWISHAM TO BE REMOVED



Workers prepare to remove the Whipple Truss bridge over Long Cove Creek October 1993.

By the time you read this report a highly rated item of railway heritage, the 107 year old, wrought iron Whipple Truss bridge over Long Cove Creek at Lewisham, will be removed and replaced with welded plate web girders. It is one of only two Whipple-type trusses in NSW, the other being a road bridge over the Shoalhaven River at Nowra and it is the only Linville deck truss, road or rail, incorporating the Whipple arrangement of members, in NSW. *See history on back page....*

CALENDER OF EVENTS NEWTOWN FESTIVAL

Donations of plants and jam, they are our best sellers, are sought as well as members to help on the day Sat. November 14. Phone Shirley on 569 1768.

HISTORY OF MARRICKVILLE

Guest speaker Chrys Meader, Local Studies Librarian, on what will be revealed in Volume 2 of the Marrickville book. Our Christmas picnic at the Rotunda Petersham Park follows. Sat. November 27.

POT LUCK CHRISTMAS DINNER

Watch this space for details of our Christmas party.

ANNUAL HARBOUR CRUISE

Cruise on the yacht Silver Spray with evening picnic on Clarke Island. Cost \$25, from 6pm-10pm. Bookings to Anne Carolan 417-4862. Limit of 35 people. Wed. December 29.

PENSTON HALL CLASSIFIED

Following submissions by the Society's Classifications Committee, Penston Hall, 159 Livingstone Rd, Marrickville, has been classified by the National Trust of Australia and included in its Register. Penston Hall, which is owned by the Department of Health as part of the old Marrickville Hospital site, was built in 1910 for the Chown family of the metalwork company Chown Bros & Mulholland. The large two storey brick house is an exuberant example of the Federation Queen Anne style and is a fine example of an Edwardian gentleman's residence and stables. It features stretcher bond brickwork, Marseilles tiled roof, bay window, carved wooden posts, Art Nouveau leadlight windows and panels, tessellated tiles and a pair of original urns on pedestals. An inspection by the Classifications Committee in September 1992 revealed the interior features to be substantially intact.



Penston Hall, built in 1910.

FROM THE SOCIAL PAGES....

A DAY AT THE RACES

Betting was brisk on the Heritage Stakes when members of the Society donned spring hats and spent a day at the races. Brian and Susan Nugent were our congenial hosts at the Rosehill Spring Carnival on September 18. There was much discussion of the form guide over a relaxed lunch in the Ascot Room as the mostly novice punters - Shirley Hilyard, Geoff Ostling, Sue Miller, Pamela Stewart, Margaret Sinclair, Judith Matheson, David Hilyard and Susan's mother Mary Eyles - unravelled the intricacies of placing a bet. The fashion stakes were also popular and three of our members braved the scrutiny of the judges in the Grace Bros Style Awards. Unfortunately there were no big winners on the day but our foray into the sport of kings was judged a social, if not financial, triumph. - Judith Matheson.

OUR LAST MEETING - SPRING GARDEN TOUR



Our first stop was Australia Street Infants School (1889) where principal Joan Constable, spoke about the school grounds. Asphalted areas under trees have been covered with bark and leaves to give a softer, quieter surface. Parents have worked hard to help acquire new climbing and play equipment, partly funded by a government grant. Near the Australia St fence is a charming semi-circular garden with plantings in rainbow colour bands. Shade is provided by box trees and camphor laurels. Irene Carder, one of our members, is an ex-pupil.

Our next stop, the Long's garden, is very attractive with fountains and a pool and lots of lovely green. Driving past 41 Gould Ave the sight of the Lamarque rose twined along the verandah edge was most beautiful. At Dibble Ave duck pond the kids enjoyed the swings and Gwen Eyre hunted and gathered kaffir plums from the tree for jam (little fruits reminiscent of lillypilly fruit but more elongated and redder). The Deguara's garden was, as ever, stunning, the wisteria gorgeous. Everyone wants a Victorian barbeque now.

A quick squiz at the gnomes, multi-coloured wombats, pigs, etc. festooning 88 Carey St before dropping in at Maurice Milliner's new nursery in Unwins Bridge Rd, Sydenham. This little oasis of brightness and colour is a real tonic in Sydenham - and we had orange juice and biscuits. Sandwiches and cups of tea and coffee and cool drinks at Thompson St, Marrickville, ended a pleasant morning. Thanks to Sue Miller for organising the garden tour. - Paula Gard.

FOOTNOTE: The delightful garden at Thompson St, filled with heritage roses and interesting perennials, belongs, of course, to Paula Gard and Bruce Welch.

HERB AND GARLIC FESTIVAL

A chance to promote the Society and sell our publications. Thanks to Brian, Mary, Roslyn, Bea, Margaret, Lindsay, Mabelle, and Shirley for their help and, of course, the ANZ Bank Marrickville for sponsorship.

ROSE'S EMPORIUM UPDATE

Who in their right mind would stand in the middle of Parramatta Rd today?

When the photo (above) was taken near the corner of Norton St, Leichhardt c. 1919, a street procession attracted a large crowd. Much of this streetscape remains intact today with the sad exception of Rose's Emporium (H.A. Rose) which can be seen on the corner of Railway St to the top right of the photo. Photo: Local Studies Collection, Marrickville Library. Marrickville Heritage Society has protested the Council-approved development for the old Rose's Emporium site, however, building is already well under way. Parramatta Rd as it looks today (below). Photo: David Hilyard 1993.



FRIENDS OF MASTERTOUCH

The Friends of Mastertouch was formed to help preserve a unique part of Australia's musical heritage - the Mastertouch Piano Roll Company of Petersham. Founded in 1919, Mastertouch is unique in Australia and the last piano roll manufacturer in the world to run machinery meticulously maintained and restored to original specifications. Plans to incorporate Mastertouch into the National Film and Sound Archive or the Powerhouse Museum have not eventuated. To ensure the preservation of this most valuable working example of industrial archaeology, together with the museum of associated musical instruments, music rolls and memorabilia from one

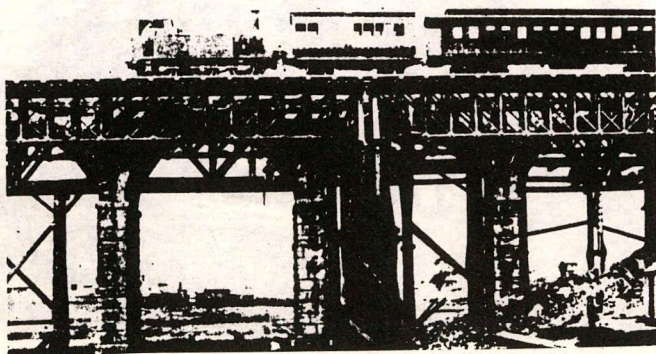
of the most fascinating eras of home entertainment, the Friends of Mastertouch seeks your support.

You can canvas both Federal and State Ministers responsible for The Arts and local Members of Parliament to establish official recognition of the heritage value of the Mastertouch Collection and the importance of the factory still in operation. Or you can join the Friends of Mastertouch. The Society has pledged its support with a corporate membership. Annual subscriptions are: individual \$25; pensioner \$10; family (ordinary) \$35; family (pensioner) \$15; corporate \$100. Write to: The Secretary, Friends of Mastertouch, P.O. Box 835, Petersham 2049.

HISTORY OF THE WHIPPLE TRUSS

The Whipple Truss bridge was the first major upgrading of a bridge on the original 1855 Redfern to Granville railway line and was built in 1885/86 to replace the 1855 stone arch bridge. The bridge was a departure from the British bridge practice that had dominated the railway expansion of NSW and was named after the American who devised it. It used a single, large diameter pin at all joints instead of many smaller rivets. Also the Whipple used parallel sets of flat section eyebars for all tension members, bottom chord and diagonals. The bracing members are made from square bars with ends bent and forged to form "eyes" that fit over pins, an improvement developed by J.H. Linville.

Squire Whipple, a civil engineer, inventor and theoretician, was born in 1804 in Massachusetts USA. He is referred to as the "father of modern truss bridges" and his book *An Elementary and Practical Treatise on Bridge Building* was widely used in railroad engineering for decades. However, the designer of the Lewisham bridge was Max Thomson, supervising engineer was Robert Kendall, contractor G.H. Royce and testing engineer Professor W.H. Warren, first professor of Engineering at Sydney University.



In 1988 rust stains on upright members alerted engineers that all was not well with the Whipple Truss. State Rail commissioned investigations. The tests were from visual to strain gauge, to acoustic emission, to microscopic analysis of samples of a critical eyebar, fatigue considerations and calculations of loadings over the years using timetables. The Tangara train was observed to create a more severe loading on the trusses than other trains. For more testing the western set of trusses was removed in January 1993 - one span to Chullora and one span to a workshop in Newcastle - and replaced by plate web girders.

Ultimately a meeting of the Engineering Heritage Committee, the Civil Engineering Panel and the

Institution of Structural Engineers declared that the structure was damaged and all damage was not known. Repairs were estimated to cost \$4.2 million and the bridge could not be guaranteed fit for service. A replacement structure is estimated at \$1.2 million.

The Whipple Truss bridge has been listed in State Rail's Railway Heritage and Conservation Register, the Register of the National Estate, classified by the National Trust and included in the Marrickville Heritage Study and Local Environment Plan No 50. The Lewisham site is also significant because there are three different types of metal deck trusses over the canal (six tracks in all): the 1886 Whipple Truss, the 1982 lattice truss and the 1925-27 Warren truss. Due to its heritage significance, part of the Whipple Truss will remain in Lewisham, installed in a landscaped setting, adjacent to its replacement bridge, with a photo plaque outlining its history and connection with the site. -Shirley Hilyard.

Reference: *The Conservation Plan and Heritage Study for the Long Cove Creek Railway Viaduct, Lewisham, Sydney, prepared for the State Rail Authority of NSW by Donald J. Fraser, May 1993.*

HOW TO JOIN THE SOCIETY

Membership is \$12 for individuals, \$18 for households and \$6 for pensioners. You will receive a monthly newsletter (except in January) and the Society's annual journal *Heritage*. Subscriptions are valid for the Society year starting July 1. Regular meetings are held on the fourth Saturday of the month. Write to PO Box 415 Marrickville 2204. Newsletter contributions welcome.

SHRUBS AND TUBS GARDEN CENTRE

130-136 Canterbury Road
Petersham • Tel: 560 3884

LEICHHARDT GARDEN CENTRE

346-350 Norton Street, Leichhardt
(Lilyfield Road end of Norton St)
Tel: 560 0889



Old Fashioned Climbers and Roses
Cottage Garden Plants
Camellias, Azaleas
All Herbs
Terracotta Pots, Lattice
Everything to keep your garden healthy