

MARRICKVILLE HERITAGE SOCIETY

COVERING DULWICH HILL, ENMORE, LEWISHAM,
SYDENHAM, TEMPE & PARTS OF NEWTOWN,

MARRICKVILLE, PETERSHAM, ST PETERS, STANMORE
CAMPERDOWN & HURLSTONE PARK



OUR NEXT MEETING

MIGRANT HERITAGE PLACES IN AUSTRALIA: MARRICKVILLE AS A CASE STUDY – TALK BY HELEN ARMSTRONG

**Saturday 23 November, 10.30 am
Petersham Town Hall**

The heritage of Australia falls into three main areas: the Aboriginal heritage and associated wilderness landscapes; the colonial settlement period from 1788 and its associated consolidation during the 19th and early 20th century; and the post World War II migration period from 1947 to the present.

Marrickville is an outstanding example of the third phase of Australia's heritage. Understanding how migrant heritage places develop is a more complicated process than normal heritage practice which tends to focus on written histories. Over the last three years research has been carried out in the Marrickville LGA by Helen Armstrong from the University of New South Wales on migrant heritage places for the Greek, Lebanese, and Vietnamese communities. This research has led to the publication of a Guide for immigrant groups to identify their heritage places in Australia. The Guide received a National Trust Award this year.



New Canterbury Road, Petersham showing the Majestic and shops important to post war migrant communities

Following Helen's topical talk with slides we will repair to nearby Maundrell Park for our **end-of-year picnic**. Bring something to eat and drink. If you haven't been to a MHS meeting before, we look forward to seeing you.

FEESABILITY STUDY!

Our study shows some members are still considering their **ability** to pay annual **fees** (due last July). You may send cheques or money orders but please don't send cash through the post. Payments can also be made at meetings or given to committee members. Non-payers will receive their final newsletter in December.

78 CHELMSFORD ST NEWTOWN

Marrickville Heritage Society and The National Trust have made submissions to Marrickville Council concerning this early pair of semi-detached single storey houses. They are believed to date from around 1850 and may be the earliest such extant dwellings in this area. They are within the National Trust Classified Camperdown Urban Conservation Area and are under consideration by the Trust for Classification and inclusion within the Register of the National Estate.

It is proposed to add a second storey to these dwellings which would change the character of the houses and affect their significant streetscape qualities. The cottages are in poor condition and certainly some development is needed but not such that it would alter the existing facade or ridge line. Development to the rear out of sight from the street would not be considered inappropriate.

Marrickville Council plans to include this property on its Heritage Schedule of the Local Environment Plan. We believe this DA should be refused by Council until a recognised heritage consultant can evaluate the significance of the property.

MARY TAIT

On behalf of all members the Executive has sent best wishes for a speedy recovery to Mary Tait who has left Royal Prince Alfred Hospital, Camperdown. A most valued Society member, Mary is our membership secretary, who also sends out all the postal newsletters and delivers her own "run" in Marrickville. Australia Post will deliver your get well message (c/o MHS).



POT LUCK CHRISTMAS DINNER Saturday December 7 7 pm

For the second year running Stanmore is the venue for our members' annual pot luck dinner. Hosts for our eighth dinner are Joyce (MHS secretary) and Paul Roy. Should you wish to come, book with Joyce on 9519 9228 and let her know what victuals you intend to bring. BYO drinks. Numbers are limited to about 35, so book early.

OUR LAST MEETING MY FAVOURITE THINGS

The Society is fortunate to have as a member Robert Hutchinson who on 26 October shared some of *his favourite things* – examples from *his* stunning collection of Australiana. Using both slides and the objects themselves he showed a cedar tobacco jar of the 1840s, portrait plaques, plates commemorating the centenary of NSW, gum leaf pottery and a plush velvet smoker's cap decorated with chenille wattle and a silk tassel. In light of current *controversies*, it was interesting to see a pair of carved emu eggs. Such carving was, not unexpectedly, done only in Australia; however, the greatest exponent of the art was a **Japanese** resident!

There were three refreshing aspects to Robert's lecture. He collects from all periods – the 1860s cedar bidet sits happily with the 1990s landscape painting; he collects what he likes, not what will necessarily be valuable; and he researches the pieces: their makers, construction, context and provenance. They are not merely objects, but examples of Australian history as instructive and evocative as any written document.

The morning was fun: the lecture and the questions from the floor were witty, intelligent and instructive. The most **probing** question was that posed by myself – who does the dusting in Robert's house?

Angela Phippen

CANTERBURY SUGAR MILL

This 1840s building was classified by the National Trust in 1979 and a Permanent Conservation Order was gazetted on the Mill and its curtilage in 1985. In July 1993 the owner Nick Scali applied to convert the Mill into residential apartments and to erect units and townhouses north and west of the mill. Following concerns raised by residents, Canterbury Council and the Heritage Office, amended plans were submitted during 1995.

On 13 February 1996 a fire seriously damaged the building (see March & April MHS newsletters). Since then the Heritage Office has approved residential conversion of the mill. However Canterbury Council a) deferred Scali's application and arranged a meeting of all interested parties; b) developed a DCP for the site which provides for the preservation of viewing corridors & indicates the type of development that Council considers suitable for the site; c) has provided consultant reports on current structural soundness of the mill and economic viability of the proposed residential development.

The applicant has lodged an appeal to the Minister for Planning under Section 76 of the Heritage Act whilst the Minister has appointed a Commissioner to report on the matter. Canterbury Council will seek legal representation and present consultant reports along with its DCP to Commissioner.

Cr Ian Latham

RAHS ANNUAL CONFERENCE

The fair city of Orange, originally called Blackman's Swamp, was named 150 years ago, and was this year's host for the RAHS conference on 26-27 October. The conference venue was Kinross Wolaroi School and MHS delegates were Richard Blair, Cheri Lutz, and Mark Matheson. The conference was cleverly titled *Rites, Rights & Writings*. Papers and discussion focused on Aboriginal reconciliation, archival access and usage, writing and publishing local history, cemetery transcriptions and CDROMing the parish maps.

Barry Pearce, a Wiradjuri man, challenged us to examine history from an Aboriginal point of view; after all Aborigines did have tens of thousands of years head-start! Writing local history is a hard slog but Pratten, Madden & Muir make it sound almost fun! In *Writing the Rites* Ian Robins demonstrated how much we can learn from church archives with reference to his study of the Kelso Holy Trinity Church registers; and a cautionary note: beware of descendants' **preferred** versions which may vary considerably from the **truth**. Judith Dunn's old cemetery tales revealed it was once customary for the husband to be buried on top of the wife, but in one case the woman's headstone had already been inscribed – *Here I lie beneath the mouldering sod*.

Orange & District Historical Society played host to visitors at *Strathroy*, a stately 1870s residence, and at their local museum. The weekend concluded with a heritage walk around old Orange. We can only marvel at how much has been kept. RAHS and Orange made this a most enjoyable weekend.

Richard Blair

STREETWISE

Conservation architect and heritage consultant Elizabeth Vines has written *Streetwise: A Practical Guide for the Revitalisation of Commercial Heritage Precincts and Traditional Main Streets in Australian Cities and Towns*. This National Trust booklet (\$12.95) was launched at the S H Ervin Gallery on 21 October by the Hon. Craig Knowles, Minister for Urban Affairs and Planning. With 120 colour photographs it examines successful applications of revitalisation principles throughout Australia and demonstrates how we can learn from past mistakes.

SHRUBS AND TUBS GARDEN CENTRE

130-136 New Canterbury Road Petersham • Tel 9560 3884

LEICHHARDT GARDEN CENTRE

346-350 Norton St, Leichhardt (Lilyfield Rd end of Norton St) • Tel 9560 0889



Old Fashioned Climbers and Roses, Cottage Garden Plants, Camellias, Azaleas, All Herbs, Terracotta Pots, Lattice. Everything to keep your garden healthy.

VALE COMMANDER BROOKS

Commander Leslie Rundle Brooks R.A.N. will be fondly remembered by members both as a familiar figure at Anzac Day marches and for having played Santa Claus at several MHS Christmas picnics, and nothing false about his splendid white beard. Born at Kalamunda outside Perth in 1900, Commander Brooks joined the navy at 14, served in two world wars and became Boom Defence Officer in Sydney before retiring in 1957. In April 1990 he attended the 75th anniversary at Gallipoli and addressed our Society that August. He was made a MHS life member in June 1991.



Commander Brooks with Shirley Hilyard Petersham
Park rotunda November 1990 (photo: Bruce Welch)

He and his wife lived in Livingstone Road Marrickville for about 50 years, but he spent his last few years in Glenfield. He died on 29 October aged 96. His funeral service took place at St Clements Church with which he had a long association. Rev. Chris Clerke and Rev. Bill Ostling conducted the service. Our condolences to Commander Brooks' family.

SPRING TRIVIA ANSWERS #2 WILLIAM COWPER DD

Who was William Cowper DD, what was his work, and why in 1848 was a tree planted in his honour at Camperdown Cemetery (now Camperdown Memorial Rest Park; at least two further memorial trees have been planted there since)? No **definitive** reason has been ascertained for the 1848 tree planting but he **was** made an archdeacon that year.

Cowper (born 1778) arrived in Sydney in 1809 and became minister of the newly completed St Phillip's Church, which position he held for the rest of his life. For the next ten years he was the only clergyman permanently in Sydney. He preached the first sermon at St James Church in 1822, contributed towards the founding of schools, published several tracts and catechisms, and was prominent in founding many Evangelical Societies including the Benevolent Society of NSW in 1817.

While convalescing in England he received a Lambeth D.D. In 1848 Bishop Broughton collated him to the Archdeaconry of Cumberland. He died in 1858 and was buried at Devonshire Cemetery. He married three times and had several children

including Charles, the colony's second Premier, and the Rev. William Macquarie Cowper who as acting Principal opened Moore College in 1856 and was the longest serving Dean of Sydney. Thanks to Rev Tom Halls of St Peters Anglican Church Cooks River, Geoff Ostling and the *Australian Dictionary of Biography Volume 1 1788-1850* for their assistance.

MOGO NO GO!

Does no-one among our 300 or so members know anything about Mogo the Aboriginal who was buried in Camperdown Cemetery in 1850 and had a tree planted in his honour (see August and September newsletters)?

Richard Blair

TEMPE HERITAGE WALK

From *Grave Reflections* to historic perambulations! On Sunday 13 October Laurel Horton swapped her pen for her walking shoes to lead the second of our occasional heritage street walks demonstrating her intimate knowledge of and natural fondness for a district where she has spent most of her life. Many Tempe houses were built from locally made bricks. Stanley Street with its series of half-hipped gable cottages is unusual, but some unsightly intrusions have snuck past Council detection.

The few remaining Tempe villa estates include the Verge designed *Tempe House* built in the 1830s by Alexander Brodie Spark, Gannon's *Hurlingham* now a refuge, and *Nelson Lodge* (once *Milford Haven*) whose owner showed us through. Whilst intact, this 1850s imposing sandstone bungalow with its wide hall, wood panelling, stone masonry and old stables awaits a sympathetic restoration. *Lymerston's* owner showed us the site of the (concreted-over) well, formerly used by Cobb & Co. coaches.

East of the highway is the old Village of Tempe, listed in the Marrickville Heritage Study. No **grand** houses here [though the former 1890s Anglican church St Marks has been reborn as a residence], but it has significance both historically, because it was laid out by Spark in the 1840s, and socially as a working class area. Bounded by highway, river, parkland and wasteland, east Tempe is rather isolated especially with the closure of so many highway shops.

In the 1950s Tempe had five butcher shops; now there are none, and the suburb's only bank closed its doors early last month. Laurel showed us the old bakery, the old police station, Zuttion's (where the first ice cream cones in Australia were made), the former tram terminus, and the heritage-listed Moreton Bay Fig which inspired author Nadia Wheatley. The Fig has outlived them all!

We may call upon Laurel to do an encore Tempe walk as part of our program in 1997. If anyone on the walk (or not) would like to join our Heritage Watch committee please ring John on 9550 6447. Final meeting for the year is 18 November.

Richard Blair

CALENDAR OF MHS EVENTS

SATURDAY NOVEMBER 23 10.30 am

Petersham Town Hall

Heritage Award winner Helen Armstrong discusses migrant heritage places in Marrickville LGA.

Details front page.

SATURDAY DECEMBER 7 7 pm

Members' Pot Luck Christmas Dinner

Details front page.

RAHS CELEBRATES

RAHS is 95 years old. November marks 25 years in the 1871 George Mansfield building *History House* at 133 Macquarie Street, Sydney. Celebrations for 11-17 November include tours of the building by Dr Peter Reynolds (twice daily at 10.30 am and 2 pm) and three Sydney sandstone talks by Bob Irving (12.30 pm on Monday, Wednesday and Friday) which are free. For details of these and other activities ring RAHS on 9247 8001.

SYDNEY COLLECTOR

Art collector Howard Hinton, a passionate purchaser and donor of art until his death in 1948, lived for 28 years in a Cremorne boarding house whose window overlooked the early artists' camps which dotted that part of Sydney Harbour. An exhibition of 60 paintings of Sydney places (**Sydney Collector: Sydney Painting from the Howard Hinton Collection**) housed in the New England Regional Art Museum) can be seen at the **Museum of Sydney on the site of First Government House**. Until 8 December.

SOUTH SYDNEY HERITAGE SOCIETY

- Fourth AGM 2 pm Saturday 7 December in room 1.07, building B2, Old Blackfriars School, Chippendale (just off Broadway). Guest speaker city historian Dr Shirley Fitzgerald. Members and friends welcome.
- Bruce Baskerville conducted a meeting at Newtown Library on 2 November to re-form the Erskineville-Newtown Group of South Sydney Heritage Society. Monthly meetings from February 1997 at 10.30 am will be on the first Saturday of each month at Newtown Library. It is decided to rename it the "Newtown Group" with the view to attracting interest from all the areas surrounding Newtown. For further information ring Anne on 9557 7343 or Sue on 9519 9980.

AGM 26 NOVEMBER 7PM

Residents are invited to attend the 11th AGM of the **St Peters Sydenham Tempe Neighbourhood Centre Inc.** at St Peters Town Hall. RSVP Lori 9550 6541.

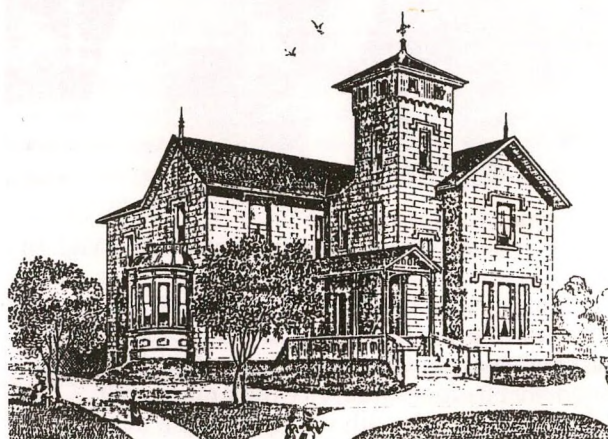
CHRY'S MEADER GOES TO AIR

Local historian and foundation MHS member Chrys Meader will give five capsule talks on our local heritage on Radio 2CBA-FM 103.2. The first will be at 12.45 pm on Tuesday 19 November and the rest at the same time on the following four Tuesdays. Tune in!

MAYBANKE

The Selfes migrated from England in 1855 and lived in Mary Reibey's former home in The Rocks. Their son Norman became an engineer and had a Sydney suburb named after him - Normanhurst. His sister Maybanke became a teacher, married, had seven children, was deserted, divorced, and in 1899 married Professor Francis Anderson of Sydney University.

In the 1890s Maybanke gained prominence as a feminist reformer active in the struggle for political, educational and social reforms. She helped found the Womanhood Suffrage League of NSW in 1891, the Kindergarten Union of NSW in 1895, and the WEA; and was foundation Vice President of Sydney University Women's Society. For a time she ran *The Woman's Voice* feminist paper and later worked as a columnist for the Sydney Morning Herald. She died near Paris in 1927 and became another *unsung, forgotten Australian heroine*.



Booth House (formerly Maybanke College)

Her local connection? Having to raise her three surviving children, Maybanke ran a successful girls' school, *Maybanke College* in Dulwich Hill from 1884 to 1899. The college was highly regarded academically. This 1882 large brick villa with a square corner viewing tower is on the corner of Wardell Road and Frazer Street. In 1923 it was acquired by the Salvation Army and renamed Booth House, an *eventide home for aged ladies*. Together with a recently built hostel appropriately called *Maybanke*, it is now a retirement home. The Salvation Army is holding a fete at Maybanke on 23 November from 9 am to 1 pm.

MARK NEEDS PROOFREADERS

Having successfully canvassed our membership this year for an auditor and a secretary, can we achieve the trifecta? Before our journal *Heritage 10* goes to the printer the articles need to be proofread. If you are interested please contact journal editor Mark Matheson on 9559 5502.

INFOLINE Angela 9564 6370

MEMBERSHIP Harold 9569 5183

NEWSLETTER Richard 9557 3823

HERITAGE WATCH John 9550 6447

MHS newsletter is printed by
Harlow Printing tel 9559 5660 fax 9558 6569