

MARRICKVILLE HERITAGE SOCIETY INC.



DULWICH HILL ENMORE LEWISHAM
ST PETERS SYDENHAM TEMPE & PARTS OF

MARRICKVILLE PETERSHAM STANMORE
CAMPERDOWN HURLSTONE PARK NEWTOWN

LAUNCH OF *HERITAGE* 10

Judging from the feedback, the launch of *Heritage* 10 at the White Cockatoo Hotel Petersham on the evening of Wednesday 18 November was a great success. MHS president Richard Blair introduced editor Mark Matheson pointing out that as well as facilitating two oral histories and contributing two articles, Mark had edited the journal and done its design and layout. Mark preferred to give the authors major credit and introduced Geoff Ostling, Barclay Wright, Elsie Ritchie, Hilda York and Ellie McKenzie who all said a few words.

Ellie (sister of late MHS president John Zinsmeester) wrote about her family's early migrant experiences, Elsie (see Our Last Meeting) gave the family history of a significant 19th century migrant family with strong local connections, Barclay, owner of the Mastertouch Piano Roll Company, has saved a unique industry from oblivion, and Geoff has put his North Petersham Walk on paper.

But in many ways the night belonged to Hilda York, depicted on the front cover with her fox terrier and whose memories also appeared in *Heritage* 9. Hilda spoke with wit and grit. In her matter-of-fact memoirs she relates her grandfather's story of his terrible accident when plaster dripped into his eye while setting up a ceiling rose. His co-workers had to quickly pluck the eye from its socket to scrape out the plaster before it set.

Mark thanked Harlow Printing, the proofreaders, and Shirley Hilyard for handling the advertising. Shirley thanked the advertisers and sponsors, in particular Marrickville Council and Rotary who have sponsored every journal. Elsie cut the ribbon to reveal the long-awaited journal, which was distributed to members present. Unable to dine in the hotel bistro, we repaired to various local restaurants – Camos on the Park, Café Portugal on New Canterbury and the RSL on Regent. Thanks to publican Trevor Smith for a great venue, to all you members who came along and well done Mark for producing this splendid publication.

(Note: Additional copies of *Heritage* 10 are \$10 each plus \$1.25 postage (\$1.50 interstate). Send cheque or ring Richard on 9557 3823. Mark would appreciate any feedback on the journal 9559 5502.)

MHS patron Eve Sharpe joins our president Richard Blair and the committee in wishing all members and their families a **Happy Christmas and a prosperous New Year.**

1999 CALENDAR OF MHS EVENTS

SATURDAY 27 FEBRUARY 10.30 am
Petersham Town Hall

Pam's Postcards - 100 Years of postcard messages with Pam Liell

SATURDAY 20 MARCH

David McBeath's Eveleigh Technology Park

(Note: Meeting a week earlier than usual due to State election)

SATURDAY 24 APRIL

Places of Memory: Sydney Home Movies
by Virginia Hilyard



"I've never been life-membered before" said Peter Arnett on receiving his MHS Life Membership Certificate from Eve Sharpe at Our Last Meeting (story inside)

CAN ANYONE JOIN THE SOCIETY?

Sure can. Especially if you have an interest in saving our heritage and/or in local history. Membership only \$8 concession \$14 individuals or joint concession and \$20 households or organisations. Subscriptions due July. You get a monthly newsletter and the journal *Heritage*. Talk or walk on fourth Saturday of each month (except December and January).

Send cheque to PO Box 415 Marrickville 1475
with name/s address and telephone
or ring Diane 9588 4930 for details or brochure.

OUR PIG IN THE CITY

Il Porcellino, the bronze boar outside Sydney Hospital, Macquarie Street is a replica of its famous namesake in Florence, Italy. Happy Birthday Il Porcellino who turns 30 on 16 December.

OUR LAST MEETING ELSIE RITCHIE ON THE JOSEPHSONS

At our 28 November meeting Elsie Ritchie (author of *Tinker, Tailor, Soldier, Sailor* which links the family histories of the Josephson, Davies, Barker and Robertson families) gave an anecdotal account of her family connection to the Josephson family and the influence of that family on the Marrickville area. Patriarch Jacob Josephson (whose story appears in *Heritage 10*) acquired Enmore House in 1841 and had three sons who all made their mark on Marrickville. His eldest son, Joshua Frey, was an accomplished musician, a town planner, a conveyancing solicitor who became a district judge, Mayor of Sydney in 1848, later a MLA and a founding member of the AMP Society.

Manuel was a master builder, instrumental in the early subdivision of substantial land grants in Marrickville. He designed a distinct architectural style which permeated the new subdivisions, such as Enmore, where in an ambitious and successful venture, over 330 workers cottages were constructed between 1880 and 1884. The youngest son Isaac, franchised a eucalyptus recipe he adapted from Aboriginal connections. He ran the family firm Waugh & Josephsons, St Peters, which produced agricultural implements. They would buy the patent and then sell the product. One of their famous contracts, in 1927, was John Deere Produce. Waugh & Joey's continued until the 1980s.

For something completely different, Elsie gave some insights into the legendary Thommo of two-up school fame. Born locally, Joseph Augustus Guest was a bootmaker by trade, but ran a pie stand near the old Tivoli, was a bouncer and boxer where he went by the name Thommo. He married – in a Newtown church – into the family which had started the two-up school in 1903*. Thommo's two-up school was held in a Surry Hills back lane. No soldiers were allowed after World War One, and no women – they cause too much trouble! We look forward to the results of this interesting research. The audience was receptive to familiar names and sites and we thank Elsie for her entertaining talk.

Noeleen Curran

(* Christopher Keating's book on Surry Hills says *Thommo's* two-up school began in 1910 in Reservoir Street and from the 1930s to the 1950s it was Australia's most famous gambling school.)

CLUB BONES

(Seen in golf clubhouse on Norfolk Island, this has no relevance to present or past MHS committees!)

In any club or organisation are four bones. There are *Wish Bones* who spend their time wishing someone else would do the work. *Jaw Bones* who do all the talking. *Knuckle Bones* who knock everything that other people do, and finally *Back Bones* who do all the work.

PETER ARNETT – LIFE MEMBERSHIP

In 1982 when the Marrickville Historical Society under Mr Ray Sowden decided to call it a day it was not very long before Peter realised that their going left a big gap in the cultural activities of Marrickville. After organising a most successful Heritage Week in 1983 he began to give serious thought to another such Society so with Chrys Meader acting as his secretary he sent out invitations to a large number of local citizens to meet in the town hall. Now this meeting was very well attended. He put forward his ideas and a few options to discuss, then threw the meeting open and it was a very successful occasion. After a vote was taken it was decided there was enough local interest to form another Society.

Sometime later Peter called another meeting for which Chrys Meader mounted an excellent photographic display covering all the activities of interest in the Marrickville area. Regretfully we didn't have such a big attendance as when people found they'd have to work they weren't so keen on joining. Nevertheless those who came showed such enthusiasm that we formulated a rough outline of the aims and objectives with the idea that incoming committee would pull it into shape. We also left the proviso that the committee could change the aims and objectives without having to come back to a full meeting.

An executive committee was formally elected [on 28 April 1984] and the Marrickville Heritage Society came into existence. Peter Arnett has maintained his interest and held a watching brief over the Society ever since. Therefore it is only fitting that on behalf of the executive and members of the Society I present Peter with his Life Membership Certificate with the earnest wish that you will long be spared to enjoy its privileges and would you accept this spoon for Leda.

Eve Sharpe, MHS Patron & life member (speech condensed)

EVERY HOME SHOULD HAVE ONE!



What's this? Would you believe a sailor on the bow of a boat protruding from the back wall of a shop on a prominent local thoroughfare. Whilst not heritage yet, it's different! A Mars Bar if you tell the editor where it is.

AMY NEEDHAM AWARD – THE FINAL CHAPTER

On Friday 13 November I had great pleasure in attending the assembly of Ferncourt Public School along with MHS members Verona Rothwell and Chrys Meader (also from Marrickville Library), to present the 1998 Amy Needham Award. How primary school assemblies have changed since the 1950s. At Ferncourt the prefects conducted proceedings, students reported on a recent camp and numerous pupils received merit certificates for all manner of achievement.

A special atmosphere pervades Ferncourt, a once stately home built in the 1880s by the bird painter Gracius Broinowski who named it *Prosna*. A later owner renamed it *Jesmont* and the name was changed to *Ferncourt* in about 1914 before being sold to the Education Department and opening as a school in 1922.



Fittingly the award-winning project was titled *From Prosna to Ferncourt*, described by convenor Gwenda Welsh as "a magnificent class project". The students from class 5/6F were Sarah Osmani, Tom Pedras, Pia Watson, Kristie Webster, James Wilson and Jack Wright, and they were assisted by teachers Anna Firth and Helen Cooper. The school principal Darelle Duncan was presented with a \$250 cheque and a copy of *Women & the Great War* for the library, whilst the children and teachers were given certificates and Marrickville spoons. Ferncourt has the distinction of being the only school in the district to win the award twice, and Pia and Kristie were involved on each occasion. Good on you Ferncourt!

Sadly the response to this award by local schools has not been encouraging and so we are discontinuing it. By agreement with Verona, the balance of the funds will go towards our War Memorials Project. Perhaps some other body such as a service club or Marrickville Council could fill the vacuum as the aims behind such a project are most worthwhile. Thanks to Verona for your ongoing interest and the warmth you brought with it, to Chrys Meader for your encouragement and enthusiasm at the school level, and to Gwenda Welsh who was primarily instrumental in bringing the Amy Needham Award to fruition.

Richard Blair

HERITAGE SNIPPETS

- * The Society thanks **Marrickville Council** for a **\$2000 grant** both for research on our War Memorials Project and towards the cost of the newsletter.
- * The **Captain Cook bust** has been beautifully restored (see July 1998 newsletter) and has found sanctuary in Council's Archival Reference Centre.
- * The Society presented Gabby Greyem with a \$100 donation for the **Trocadero Community Trust** following her presentation at our 28 November meeting. Members wishing to donate to this worthy cause to revitalise this important 1889 Newtown building can send a cheque to the Trust at 97 Gowrie Street Newtown (9557 2299).
- * Danie Ondinea represented MHS at the **Looking After Cemeteries workshop** at Penrith on 6 November, gleaning useful information for a Landscape Conservation Plan being prepared for Camperdown Cemetery.
- * MHS was also represented at the **Sydney Airport Environment Strategy** workshop on 27 October which identified community concerns on environmental issues at Sydney Airport, though the brief excludes aircraft noise and air quality! Sinclair Knight Merz is preparing this strategy for the Commonwealth Government.
- * Heritage architect Scott Robertson led an Art Deco Society walk (co-prepared with Jennifer Hill) in the **Abergeldie Estate Dulwich Hill** on Sunday 15 November. Following demolition of the 1880s Italianate mansion *Abergeldie* in 1928, the Abergeldie Estate became "the last large area of the current local government area of Marrickville to be subdivided... [and] was classified by the National Trust of Australia in July 1986". It is one of Sydney's best examples of a relatively intact Interwar housing estate. Scott may conduct this walk for MHS some time.
- * On 21 November the **former Stanmore Fire Station** was ablaze with improvised organ music accompanying the 1920 silent film *The Man From Kangaroo* starring Snowy Baker. When the theatrette (with seats from the old Mayfair) is finished, the **Friends of Mastertouch** will screen its films there.
- * We send member **Frances Shinn** our best wishes after a serious accident which put her in RPA Hospital. **Leslee Isted** is well on the road to recovery after her fall. Leslee has sent the Society a thank you card for the good wishes extended. And congratulations to **Dorothy Gaston**, from one of our pioneering families, who recently turned 90. Dorothy still cuts her lawns using a push mower and continues to help in the St Brigid's Church office on weekends. She couldn't make the launch, but enjoyed the journal, especially the memoirs of Errol Lea-Scarlett.

RAHS CONFERENCE 24-25 OCTOBER

Several MHS members attended the RAHS Local History Conference in the former penal colony of Port Macquarie on 24-25 October. The theme *Our Changing Heritage* is reflected in significant amendments to the Heritage Act currently before Parliament intended to change roles of all levels of government and community groups involved in the protection of heritage.

The Hon. Jan Burnswoods MLC noted in her opening address that with withdrawal of corporate and government facilities, and as the scope of *heritage* widens to include maritime, movable, indigenous, ethnic and natural items, there are increased opportunities for local heritage societies to interest the wider community in their heritage.

NSW Heritage Office Director Rosalind Strong and her staff outlined proposed changes to the Heritage Act, stressing that more responsibility for local heritage would rest with local government, and that communities, especially heritage and historic societies, would be responsible for ensuring that local government fulfilled its heritage obligations. Former Port Macquarie mayor, Ray Cooper suggested that councillors will have to be cultivated by heritage societies to become committed to local heritage issues.

At the 1868 courthouse an exciting and informative convict trial re-enactment showed how media and activities can *give people the capacity to imagine what their past was like*. Whilst Port Macquarie has deliberately or accidentally destroyed much of its penal colony past, much has also been restored as an important part of a carefully tended holiday playground that is well worth a visit.

Scott MacArthur

NEWTOWN FAIR

As has been the recent trend on festival days, the Spring weather at this year's Fair on Sunday 8 November was lousy – wet and windy – and attendances were accordingly down. Trying to break even in these conditions is difficult especially when not-for-profit community organisations are charged as much as \$130 for stall hire and member donations were few. However this was still the place to be with the Newtown crowd arguably more colourful than the stalls. Thanks to Peter, Richard, Robert and Shirley who ran the stall and donors Barclay, Pippa and Jan whose home-made toffees and toffee apples were the novelty hit of the stall.

SUMMER TRIVIA QUESTION

What of significance happened on the corner of Stanmore Road and Liberty Street, Stanmore on 28 August 1878? (write or ring editor 9557 3823)

POT LUCK XMAS DINNER & RAFFLE

Our annual Pot Luck Christmas dinner on Saturday 5 December saw a good mix of regulars, new recruits and rarely-seen members who relished the diverse and imaginative array of food and the spacious Newtown home of Peter Cousens. Thanks Angela for organising and Peter for hosting this most enjoyable evening.

The raffle was drawn by Laura Curran, 2½ years old who recently showed her prowess on the MHS croquet day. Congratulations to Shirley Doolan who won the major prize of three polka dot *Diana* jugs in mint condition (donated by Pat Mullen). John Waterstreet won the set of National Trust prints (donated by Ellie McKenzie) and Paul Roy the year's subscription to Choice Magazine.

FROM THE ARCHIVES – BANK OF AUSTRALASIA MARRICKVILLE



Does anyone remember the Bank of Australasia and this branch which stood on the south west corner of Marrickville Road and Silver Street? An ANZ bank is now on the site and Marrickville Post Office still occupies the opposite corner. Curiously the postcard gives the name "Bank de Australasia" on the east wall, though the card was actually printed in Germany. The manager's residence would have been in the bank building with adjacent yard. Next door was a real estate agent.

The reverse side is of additional interest with printed ads for a publication called *Young Australia* selling at "posted 2d. copy"; also a Young Australia Cot Fund Art Union for the Royal Alexandra Hospital. Does anyone know what year this would have been, when the building was replaced and what the Bank of Australasia became? The card is from the Robert Hutchinson collection.



JOHN A. WRIGHT
Australian Country Furniture and Bric-A-Brac
529 King Street Newtown 9516 5754

SYDNEY TO ASHFIELD BY RAIL IN 1878

(Tickets please! We're boarding at Sydney Terminus – now Central Station – on the Western Trunk Main Line bound for Ashfield. It's 120 years ago and somewhat more scenic than now. Note that Eveleigh (now Redfern), McDonald Town and Stanmore (only built that year) were then merely "platforms" whilst travel times were about the same as today. We'll continue this trip on to Parramatta at a later date. From *The Railway Guide to New South Wales: Itinerary and Descriptions of Scenery*, 1878.)

Eveleigh Platform, 1 mile; 70 feet above sea-level. – Eveleigh Platform, only a short distance to the left, beyond the Redfern Railway Tunnel, is reckoned a mile from the Sydney Terminus. Short as this distance is, by rail, this platform is found to be very convenient for persons residing at Alexandria, Redfern, and Waterloo. As the passenger leaves the Sydney Terminus he may have a good view of three handsome stone edifices near the line—the Railway Mortuary Station, with the Wesley Church, to the right; and St. Paul's Anglican Church and Tower to the left. Many "Suburban trains"—such as can, between Sydney and Parramatta, readily stop (if especially required) at a "platform" like Eveleigh—pass by during the day.

McDonald Town Platform, 1½ mile; 80 feet above sea-level. Having passed "Eveleigh," the passenger by the train has, at once, to the left, a fine prospect of Botany Bay in the distance; across a level, open, country, with the church and village of St. Peter's on elevated ground to the westward. On the right of the Line can now be seen the grand architectural outlines of the Sydney University—to the west of which (on the ridge of the hill, close to Newtown) stands the Deaf, Dumb, and Blind Asylum—a curious red brick building, in marked contrast to its more pretentious neighbour. The "McDonald Town Platform" is placed at a siding, just where the railroad winds to the right, before it enters Newtown.

Newtown Station, 2 miles; 96 feet above sea-level. – The Railroad, ascending gradually from the Terminus, now runs under a bridge and through the pleasant suburban township of Newtown. Emerging from the shadow of a second bridge, the traveller usually finds that the train halts for a few moments at the Newtown Station; close to a pretty Gothic church erected by the Roman Catholic communion. Appointed time for train to reach the Newtown Station after leaving the Sydney Terminus, about 6 minutes.

Stanmore Platform, 2½ miles; about 100 feet above sea-level. This platform stands about half-way between Newtown and Petersham Stations, and is for the convenience of the residents of the hamlet of Stanmore.

* * * * *

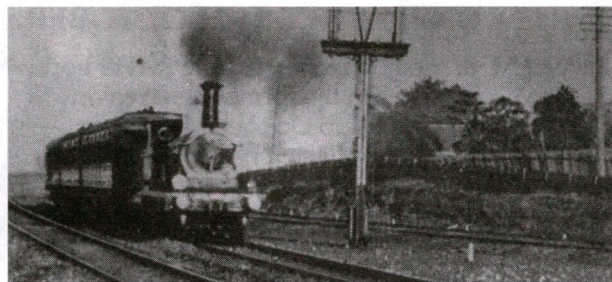
South Sydney Heritage Society invites MHS members to Newtown Library Brown Street on Saturday 6 February at 10.30 am to hear railway historian Don Hegarty talk on railway construction through Newtown in the 1850s.

SHRUBS AND TUBS GARDEN CENTRE

130-136 New Canterbury Road Petersham • Tel 9560 3884



Old Fashioned Climbers and Roses, Cottage Garden Plants, Camellias, Azaleas, All Herbs, Terracotta Pots, Lattice. Everything to keep your garden healthy



Steam passenger train approaches Stanmore Station from the city (Marrickville People & Places page 31)

Petersham Station, 3 miles; 100 feet above sea-level. – Having left Newtown the traveller by the train is pleased to observe an excellent and comprehensive view stretching away to the northward—to the heights of the picturesque suburban hamlet of Balmain, the church towers and houses of which here first become plainly visible. Beyond Balmain the North Shore hills extend in the extreme distance. On the southern side of the line, houses, villas, gardens, and slowly developing streets are successively presented; where (not long since) there was nothing but open country, or shady "bush." The first clump of forest trees, yet undisturbed, on the old Annandale Estate, next shows itself on the right, and is, of course, the object of much curious speculation to European visitors, unaccustomed to the rather stiff and formal eucalyptus.

On approaching Petersham Station a fine view over the country unfolds itself to the right—the celebrated "Blue Mountains" becoming visible far away to the westward. Petersham Station is now the centre of a thickly populated suburban district, and on the slopes around it are many really delightful villas and gardens. Usual time of trajet from Sydney to Petersham, about 12 minutes.

Ashfield Station, 5 miles; 86 feet above sea-level. – Quitting the Petersham Station the railroad for a while traverses a rolling country, numerous inhabited. The burial-ground and Roman Catholic Church of St. Mary and St. Joseph then stand together for a moment near the advancing train to the right; and, after that, the old (and somewhat decayed) village of Petersham comes directly in view, down in the hollow, lying on the side of the Parramatta Road. The course of the train brings the tourist next, somewhat abruptly, by a viaduct over Long Cove Creek, a stream which follows along the bottom of the gorge, down which—away towards the Parramatta River—is suddenly disclosed a long vista of picturesque woods.

The slender spire of St. David's Presbyterian Church is seen amongst the trees to the north-west in the mid distance. Away to the left are woods much nearer to the Line, and then the southern edge of the old Ashfield Racecourse is gained, with the old Southern Road from Sydney on the right hand; and so, passing under a bridge and through a deep cutting between houses, orchards, and gardens, the train at last comes thundering into the pretty village of Ashfield. Time between the Sydney and Ashfield Stations, about 18 minutes—sometimes less.

* * * * *

MHS & THE INTERNET*

The Society is considering a quantum leap into the future of heritage research and publishing by setting up a Marrickville Heritage Society Web Page*. Gary Luke (a member of both Marrickville and South Sydney Heritage Societies) has designed SSHS's Home Page* and some others as well. He suggests that a successful Web Page requires a small group, or even one person, keen to keep it up to date. So if you are a computer geek* or a budding Bill Gates* who would like to help your Society move with the times, please ring me on 9559 5736.

Scott MacArthur

* To find out what these terms mean, contact your local librarian or Generation Xer.

HERITAGE WATCH

The Society has strongly opposed a DA for a two storey house at **26 Stanley Street Tempe**, a street identified in the Marrickville Heritage Study as a significant streetscape and a precinct of particular heritage and aesthetic value.

Hope Healthcare has applied to Council to rezone the **Eversleigh Hospital site Petersham** to residential. MHS has lodged a submission urging the retention of key elements of the site and an independent conservation study be done.

The attractive 1870s **Brook Lodge 174 Denison Road Dulwich Hill** was recently sold at auction. One to watch as it was advertised as having development potential!

A Cooks River clean-up is a long-running environmental joke perhaps, but PPK Environment and Infrastructure Pty. Ltd. is preparing a Cooks River Stormwater Management Plan. There have been workshops, a questionnaire, and widespread consultation in 13 Council areas. Project co-ordinator is Emma Synnott 9789 9476. A similar plan is being prepared for the Lower Parramatta River (co-ord. Helen Papathanasiou 9719 0357).

Marrickville Council has refused the revised DA to build a porte cochere at **Locke-Haven 60-68 New Canterbury Road Petersham**. Our submission to Council was that the DA not succeed.

Council has approved the amended DA for **92-96 Percival Road Stanmore** with conditions. MHS endorsed revised plans with recommendations.

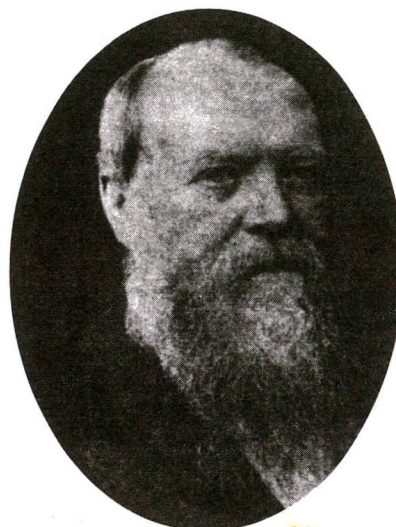
Elsewhere Woollahra Council recently failed to place an order on the proposed redevelopment of **Strickland House at Vacluse** which would have effectively blocked or at least limited the handing over of this valuable public place to developers at the expense of the public.

A ROSE BY ANY OTHER NAME: ROSENEAU, DR CHARLES EICHLER & FAMILY HISTORY

The Society sometimes receives family history enquiries from descendants of former local residents. The specialised nature of family history is such that it is beyond the scope of the MHS. However all letters are answered with any relevant information and correspondents are referred to other sources such as Marrickville Library Local Studies Section, the Society for Australian Genealogists and RSVP in the Herald.

One such recent enquiry came from Ben Hafey visiting from Toronto, Canada who approached us on behalf of Norman Vincent of Connecticut, USA, great great grandson of Dr Charles Ferdinand Eichler (1822-1902), a once-prominent Sydney medical practitioner. Did the Society know anything of *Roseneau*, a house in Illawarra Road Marrickville where Dr Eichler had lived? Eichler (pictured below), in his obituary, was described as "for many years honorary visiting surgeon to the Sydney Hospital, and one of the

founders of the German Club, his house having been the first meeting place in connection with its establishment."



Prince Alfred, the Duke of Edinburgh visited Sydney both in 1868 – surviving an assassination attempt by shooting at Clontarf on 12 March, a direct outcome of which was the founding of Royal Prince Alfred Hospital – and in 1869 to open RPA. On one of these visits "Dr Eichler entertained [the prince and] several thousands at a garden party at his residence, Rosenau (sic) Marrickville, where he cultivated an enormous number of varieties of roses."

In the Sands Directory Dr Eichler's only listed addresses are for his city medical practice. However in 1880 Allen George Churchwood is listed as living at *Roseneau* on the corner of Illawarra Road and Warren Road. In 1882 the Congregational Church is listed on this site. It was later called Roseby Memorial Church named after Dr Thomas Roseby.

Marrickville Library Local Studies Collection contains the transcript of a letter from one of Charles' sons, Fred, indicating that *Roseneau* was on Illawarra Road near Warren Road Marrickville and that part of his property was donated for the Roseby Memorial Church. *Roseneau* was named after a place in Germany noted for its splendid roses where Prince Alfred "spent several of his young educational days". Dr Eichler imported many roses from here which he cultivated on his property *Roseneau*.

Can anyone with information to pass on about *Roseneau* or Dr Eichler, please write or contact me on 9557 3823?

Richard Blair

For your diary – 1999 Heritage Week 17-25 April

PRESIDENT/NEWSLETTER Richard Blair 9557 3823
JOURNAL HERITAGE 10 Mark Matheson 9559 5502
HERITAGE WATCH Mark Maloney 9516 2788
WAR MEMORIALS Angela Phippen 9564 6370
TREASURER Diane McCarthy 9588 4930