

MARRICKVILLE HERITAGE SOCIETY INC.



DULWICH HILL ENMORE LEWISHAM
ST PETERS SYDENHAM TEMPE & PARTS OF

MARRICKVILLE PETERSHAM STANMORE
CAMPERDOWN HURLSTONE PARK NEWTOWN

OUR NEXT MEETING FRANCIS FOY TALKS ON HISTORY OF MARK FOYS Petersham Town Hall Saturday 27 May 10.30 am

When we were boys / We bought our toys / From Mark Foys / Now we are men / We return again / And bring our boys / To get their toys / From old Mark Foys. This rhyme used to appear each Christmas in the magnificent toy window at Mark Foys in Liverpool Street, and may still be remembered by window shoppers of about fifty years ago.



Both Mark Foys stores in Liverpool Street from Hyde Park believed to be in 1940s
(from postcard collection of Robert Hutchinson)

Mark Foys first opened for business in 1885 in Oxford Street near where their *Store Beautiful* was built on the corner of Elizabeth and Liverpool Streets in 1908. This wonderful department store building fortunately still stands as the Downing Centre containing state law courts. The huge elegant crystal chandelier has recently been re-instated, hanging once more over the ground floor. Ah, memories!

Descendant **Francis Foy** will present an illustrated talk on the history of the store and this notable family, which also started the famous and innovative Hydro Majestic at Medlow Bath in the Blue Mountains.

(Note: Pre-GST **Book Sale**: come early to meeting for bargains as prices on old stock reduced to sell)

Airport Link Open Day 9.30 am to 5.30 pm Sunday 21 May (prior to the regular service of new Airport Link line commencing at 7 pm). Tickets \$9 adults, \$6 children. Proceeds to 2000 Paralympic Games. Rotary organising events at Wolli Creek, Green Square and Mascot stations. Aircraft Open Day at Domestic Terminal. Bookings Ticketek on 9266 4800. Airport Link information ring Mary 9384 1000.

PEOPLE'S WALK FOR RECONCILIATION

As part of **Corroboree 2000**, a weekend national event to further the cause of Aboriginal reconciliation, members and friends are invited to join the thousands expected to do this historic reconciliation walk across the Sydney Harbour Bridge roadway on **Sunday 28 May**. The walk starts from North Sydney Station between 9 am and 1 pm. If you intend walking independently ring 1902 210 001 to register; or if you wish to join a group of Marrickville residents meet at Petersham Town Hall at 10 am and proceed to North Sydney by train.

* * * * *

On Friday 26 May at 6.30 pm to mark the anniversary of *Sorry Day* everyone is welcome to join **Marrickville Residents for Reconciliation** at Richardson's Lookout, Holt Crescent, Marrickville to look at the *Bringing Them Home* report, for story-telling, a campfire and light supper. On 27 May the national Document of Reconciliation will be presented and a Reconciliation Foundation launched at the Opera House. For more information about these events and the MRR ring Wendy Frew 9558 3162 or Peter Dixon 9558 5762.

MCDONALDS THREATENS JOHNSTON'S CREEK HISTORIC SITE STANMORE

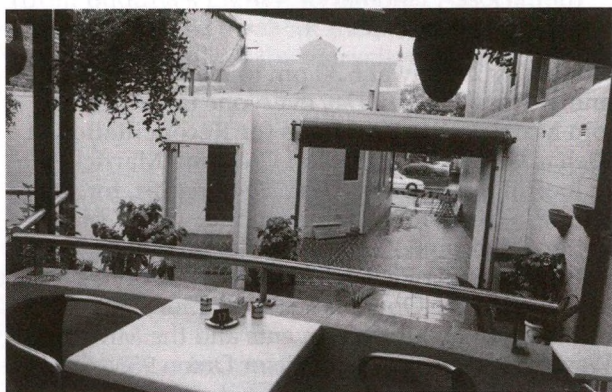
Members are urged to attend the Marrickville Council meeting at 6 pm on Tuesday 6 June to support Stanmore residents who are opposing any expansion of **McDonalds Stanmore** on the corner of Parramatta Road and Bridge Street. Local residents and businesses have lodged over 300 submissions opposing the DA on grounds of increased pollution, noise at all hours, social problems, heritage concerns and inadequate designs submitted.

A significant heritage concern exists over McDonald's plan to lease the air space over historic **Johnston's Creek stormwater channel** from the Water Board for a cantilevered road. Historic Trail Plaque #9 indicates that Johnston's Creek "crosses Parramatta Road here. It was named after Colonel George Johnston of Annandale House. A wooden bridge was built here in 1805. A toll bar was temporarily located near the bridge in 1839". The site is listed in the 1986 Marrickville Heritage Study as on the site of Annandale Farm. (On the old stone bridge on the opposite side of Parramatta Road it is erroneously called "Johnsons Creek".) The reddish lettering inlay *Municipality of Petersham* is still clearly legible on the footpath. This DA must not proceed.

MARRICKVILLE MEDAL 2000

Fifteen entries were submitted for the sixth annual Marrickville Medal – this year for public or commercial building works – to a recent building or conservation work which contributes to the cultural heritage of the Marrickville area. All nominations are commended for the effort made to develop and restore their buildings, to reflect both the old and more recent cultures of Marrickville.

The Medal was won by Mocha Coffee in Newtown a site that extends from the cafe at 349 King Street through to the renovated former coffee shop at 16 Enmore Road. The jury considered this project outstanding in many ways. The new cafe is well designed with an exciting modern shop front to King Street whilst both facades are in keeping with the heritage aspects of the streetscape. At the junction is a very attractive open public eating area. Owner Paul Mannassis is to be applauded for his foresight in conceiving such a stunning combined development which should set a precedent for other sites between these two major roads (architect Caldis Cook Group, builder Club Constructions).



Mocha Coffee arcade Newtown
(photo: Catherine MacArthur)

There were **four High Commendations:**

- a) *Innovative design retaining existing fabric* **factory at 1-7 Probert Street Camperdown** (owner M & L Giacomazzi, architect Gordon & Valich, builder JPA Constructions) – a very well-planned and detailed renovation;
- b) *Adaptive reuse of historic building* **6 Mary Street Newtown** (owner, architect & builder Central Sydney Area Health Service) – restoration and renovation of a former hall has given this health centre a spiritual quality;
- c) *Infill design and mixed use* **May Building 286 Marrickville Road Marrickville** (owner Rabelais Pty. Ltd., architect Greg Thompson & Partners, builder A & P Parkes Constructions) – architectural detailing of front and rear facades handled very well in a contemporary style;
- d) *Recognition of cultural landscape* **Richardsons Lookout Holt Crescent Marrickville South** (owner Marrickville Council, landscape architects Samantha Bennett & Yma Ten Hoedt) – a very significant local site attractively landscaped.

(Condensed from comments by judges Beverley Garlick, architect; Hector Abrahams, heritage architect; and Robert Hutchinson, President Marrickville Heritage Society. Award coverage in separate report.)

HERITAGE FESTIVAL 1-9 APRIL

An impressive exhibition of local sporting photographs, artefacts and memorabilia marking the theme *Sport & Leisure in Marrickville* was formally opened on Sunday 2 April at the Herb Greedy Hall in Marrickville by **Dr Andrew Refshauge**, local State Member, Minister for Urban Affairs & Planning and Deputy Premier who also presented the Marrickville Medal.

Dr Refshauge congratulated the work of both Marrickville Council and Marrickville Heritage Society in promoting the Heritage Festival and preserving our local heritage. Acting Mayor **Sam Iskandar** announced the winning Medal entries (see separate report). Entrant photographs were displayed and slides with commentary of all entries presented.

(The presence of a group protesting against the proposed M5 Turrella ventilation stack added colour to the afternoon's proceedings and had no detrimental impact on the occasion except in reducing the amount of access time heritage devotees had to the Minister for Heritage.)

The photographic display travelled to the foyer of Marrickville Council, to Marrickville Metro and finally on Sunday 9 April to Newington College where it stood beside the permanent display of Newington sporting prowess. Headmaster **Michael Smee** (who has joined MHS) led an informative tour of significant Newington buildings.

A compilation video of sport and leisure in the Marrickville area was shown as a prelude to two talks. This comprised a diversity of activities – team games such as baseball, cricket and football, individual pursuits like swimming, diving, water skiing (on Cooks River towed by a car), cycling and a kids scooter race around Henson Park, and finally excerpts from an Annette Kellerman movie.

Sports historian **Richard Cashman** spoke on swimmers Kellerman and the equally famous Fanny Durack, both who had strong local associations. Richard introduced **Kevin Berry** who grew up in Warburton Street Marrickville and was educated at De La Salle Marrickville. An early state rival was Nick Whitlam, whose mother Margaret swam in the 1938 Empire Games.

Kevin became one of Australia's finest butterfly swimmers competing at the 1960 Rome Olympics at fifteen, winning the 200 metres gold medal at the 1964 Tokyo Olympics and breaking many world records. He has since become a passionate ambassador for the Olympic Movement. (Kevin and Richard will both be bearers in the Olympic torch relay.)

Thanks are due to the **Marrickville Council Heritage Promotions Committee** for organising the exhibition, associated events and the Marrickville Medal. Committee members were Matthew Devine (convenor), Catherine MacArthur, Antoinette Buchanan, Vivienne Larking, Robert Hutchinson, Avril Chiswell, Richard Blair, Scott MacArthur, Donna Braye and Rachel Jackson (till December 1999). Special thanks to Antoinette who

assembled the exhibition and together with Vivienne facilitated the splendid video; and Catherine who performed numerous tasks behind the scenes, and she's only employed by Council three days a week.

Editor

GEORGE MARTIN FARROW

When I read the item in the February newsletter about John Farrow, Mia Farrow's father, it brought back memories of another member of this family, George Martin Farrow, John Farrow's cousin, who was one of my father's friends. George's family also lived in the Marrickville area and he made a significant contribution to Australia that is possibly now only remembered by his family.

Son of George F Farrow he was born 10 April 1896 and his birth registered at St Peters. After leaving school George was employed in the NSW Railways Department and on the outbreak of the First World War in 1914 joined the AIF. He was wounded at Gallipoli, and then while serving with the 18th Battalion in France was so severely wounded that both his legs were amputated. This did not prevent George from leading a full and useful life. He rejoined the public service and rose to a high administrative position with the Road Transport and Tramways.

In 1923 George married Dorothy Drysdale and two daughters completed the family. In his leisure time George was a tireless worker to improve conditions for returned servicemen and their families. George was the Federal President of the Limbless Soldiers Association 1923-1937, Trustee of NSW Anzac Memorial 1926-37 and a foundation member of Legacy. In 1934 he was awarded a CBE in recognition of his contribution to the community.

Shirley Doolan

Note: Could there be a family connection with Farrow Lane off Zuttion Lane Tempe?

PARK WATCH – SYDENHAM GREEN

Whatever one's views about **Sydenham Green** and how it came about, it is certainly worth a look. The centrepiece, the so-called Sydenham *Departure Lounge*, some may regard as charming, others perhaps gross: the huge lounge suite covered with a decorated ceramic antimacassar, nearby an enormous teapot and cup, and the lamp on its base. A wall depicts newspaper headlines immortalising protests against aspects of the airport industry.

Incorporated is a modern playground, barbecue facilities and a giant chessboard – the practical mixed with the whimsical, the satirical and social comment. One of the design artists says that because local schoolchildren had input into the design, local vandalism will less likely occur and it has been declared an alcohol-free area. Nevertheless there is a certain fragility about this memorial space.

Between here and the corner of Unwins Bridge Road and George Street are two other significant

memorials. One depicts the layout of houses demolished in the 1995/98 debacle. A plaque encapsulates the precinct's history concluding on an optimistic note, and thus euphemising the fact that the heart was being ripped out of the suburb of Sydenham because of aircraft noise. It reads:

"Sydenham Green was established as urban parkland in 1999. Formerly the residential heart of Sydenham, the site became available through the acquisition of aircraft noise-affected homes. Originally the hunting grounds of the Cadigal Clan of the Dharruk people, the area became farmland after colonisation before residential subdivision in the nineteenth century. This map illustrates the former neighbourhood plan of Sydenham. The design of this parkland was developed in close consultation with residents of the local area as a cultural and recreational landscape, with the aim of bringing new life to Sydenham."

Though the second memorial seems to have no specific connection with the park area, it is most poignantly and beautifully crafted in sandstone. It remembers the numerous Aboriginal children uprooted and removed from their family home and placed in alternate, long term care. It reads:

"We may go home, but we cannot relive our childhoods. We may reunite with our mothers, fathers, sisters, brothers, aunties, uncles, communities, but we cannot re-live the 20, 30, 40 years that we spent without their love and care, and they cannot undo the grief and mourning they felt when we were separated from them. We can go home to ourselves as Aboriginals, but this does not erase the attacks inflicted on our hearts, minds, bodies and souls, by caretakers who thought their mission was to eliminate us as Aboriginals. – Link Up (NSW)."

Businesses were also victims of Sydenham's disembowelment. The very name Sydenham Green, evocative as it is, was the name of a thriving nursery previously on Unwins Bridge Road. The former owner (a MHS member) allowed the name to be bestowed on this erstwhile residential area. Sydenham Green memorialises many things. Go see it.

Richard Blair

SHRUBS AND TUBS GARDEN CENTRE

130-136 New Canterbury Road Petersham • Tel 9560 3884



Old Fashioned Climbers and Roses, Cottage Garden Plants, Camellias, Azaleas, All Herbs, Terracotta Pots, Lattice. Everything to keep your garden healthy

CALENDAR OF MHS EVENTS

SATURDAY 27 MAY

Francis Foy talks on history of Mark Foy's
Details on front page

SATURDAY 24 JUNE

Annual General Meeting

OUR LAST MEETING

NAN TIEN TEMPLE & ILLAWARRA

Aided by wonderful weather, bus sweets, raffles, splendid scenery and panoramas from two of Australia's finest lookouts (Sublime Point & Stanwell Tops), our trip to the Illawarra area on 29 April again proved that coach trips are the Society's most popular activity.

44 MHS members and friends were escorted over the magnificent-looking 1995 **Nan Tien Temple** at Berkeley – the largest Buddhist Temple in the Southern Hemisphere – by guides Una and Tony (from Buddha's Light International Association) who enlightened us about the Buddhist faith and the design details of the marvellous buildings, ornamentation and grounds. Endeavouring to "keep noble silence" we duly observed the customs of the Buddhist faith, while followers worshipped as Buddhism has no set holy day. This massive complex has conference rooms, a lodge, restaurant (where we had a generous lunch), museum and numerous other facilities. Unable to be adequately described in a few lines this is a unique experience.

The afternoon featured three diverse museums starting with the **Wollongong City Gallery** described as "the largest regional art museum in Australia". Not only wonderful contemporary Aboriginal and local art but also works by Von Guerard, Martens, Elyard, Roberts, Wakelin, Lanceley and Smart. The **Illawarra Museum** (1882) was originally a post office, but since 1966 has operated as a delightful trip into Illawarra's past. It is run by the Illawarra Historical Society founded 1944. Finally to the **Black Diamond Heritage Centre** at the restored 1887 Bulli railway station full of coal mining tools, railway paraphernalia and domestic relics. Well done Robert Hutchinson and Peter Cousens for organising such a felicitous day.

Richard Blair

We welcome news that a working party has been established to **review the role of the Land & Environment Court** and will call for written submissions. Some appalling decisions have been made by this court so this is an opportunity for societies such as ours to express their views.

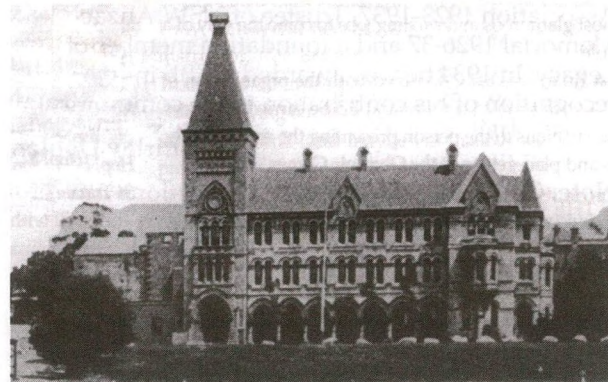
PRESIDENT Robert 9568 3079
TREASURER Diane 9588 4930
HERITAGE WATCH Scott 9559 5736
NEWSLETTER Richard 9557 3823

OBITUARY Member **Phoebe Bales** (nee Waite) died aged 92 on 4 April. New Zealand born Phoebe came to Australia with her family aged two and grew up around Gladesville. She married Stan Bales in 1938 and lived in Middleton Street Petersham ever since. Like her family Phoebe was very actively involved with the Scouting Movement especially 1st Petersham, and received the Scouting Association's Medal of Merit.

Heritage 5 contains memories of the *Appa Teeza* hamburger shop in Stanmore Road Enmore run by Stan in the 1940s. Phoebe for a time assisted in the kitchen responding to the bell calling for fresh supplies when business was brisk. Weary of being constantly summoned from the kitchen, Phoebe would place a lettuce leaf under the hammer of the bell! Condolences to Stan and his family.

NEWINGTON ACROSS THE YEARS: A HISTORY OF NEWINGTON COLLEGE 1863-1998

One of Australia's oldest and most respected Independent Schools, Newington College began inconspicuously with sixteen "miserable boys" at Newington House, the stately residence originally built for colonial pioneer, John Blaxland, at Silverwater, adjoining what is now the Sydney Olympic site. In 1880 the College moved to its present location at Stanmore and its current enrolment is about 1650 pupils.



Dr Peter L Swain's 1989 comprehensive history of Newington College *A Quarter Past the Century* was recently revised and updated to incorporate the new Wyvern House Preparatory School and the Edmund Webb Senior Boarding House in nearby Cambridge Street which opened in October 1998. Special attention has been devoted to the recent headmasterships of Tony Rae (1972-93) and Michael Smee (from 1993). *Newington Across the Years* is \$40 at Newington's front office.

MHS member **Peter Swain** was both the College Chaplain from 1970 until his retirement in 1996 and from 1971 its archivist, a position he held until recently. Peter has written two articles for our journal: on Newington's past teachers in *Heritage 6* and the story of old Newingtonian and eminent architect Hardy Wilson in *Heritage 9*.