

# MARRICKVILLE HERITAGE SOCIETY INC.



DULWICH HILL ENMORE LEWISHAM  
ST PETERS SYDENHAM TEMPE & PARTS OF

MARRICKVILLE PETERSHAM STANMORE  
CAMPERDOWN HURLSTONE PARK NEWTOWN

## OUR NEXT MEETING ANNUAL GENERAL MEETING Petersham Town Hall Saturday 24 June 10.30 am

We invite all members to attend the 16th AGM of the Marrickville Heritage Society. Reports will be presented by the president, treasurer, publication editors, and committee convenors for heritage watch, war memorials project and oral history. All committee positions will be declared vacant. Nominations are called for president, two vice presidents, treasurer, secretary, assistant secretary, five committee members and heritage watch convenor. Nominations may be made in writing to the Society or on the day.

For outstanding service to the Society, Life Membership of MHS will be presented to **Chrys Meader** and **Shirley Hilyard**.

Our guest speaker is **Vivienne Larking** from Marrickville Council's Archival Reference Centre. Vivienne will cover the history of the ARC, multi media resources, accession lists and conservation treatment. We will learn about two exciting initiatives – the Tabularium and the Marrickville Heritage Centre. Vivienne will conduct a brief tour of the ARC which were Petersham Council Chambers from 1938 to 1948 and Marrickville Council Chambers until 1974.

After the meeting join the new committee in nearby Maundrell Park for lunch. Bring some sandwiches to share. We will provide champagne and orange juice.

## WELCOME TO NEW MEMBERS

Lyn Spry, Dulwich Hill; Sam Byrne, Patricia Feast, both of Enmore; Harte Bros Painters, Hurlstone Park; Mary & Barrie Dyster, Maureen Hedrick, Alicia Philbey, Patricia Thorne, all of Petersham; Michael Smee, Newington College, Stanmore; Norma & Olive Buzacott, Epping; Paul O'Regan, Peakhurst; Sascha & Bethley Laurenson, Putney; Irene Higham, Kew, Victoria.

## MHS FEES & THE GST

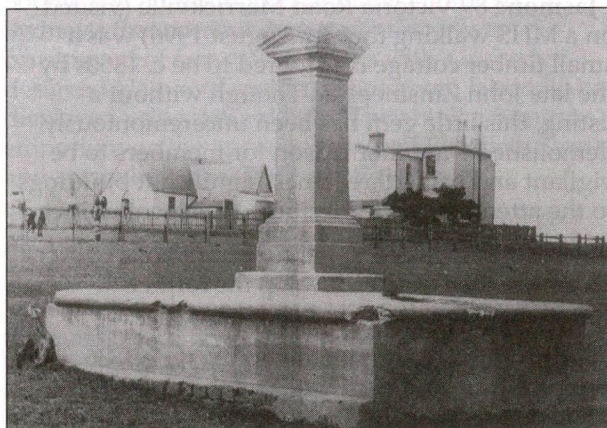
As we had a small rise in our membership fees last year the fees for 2000/01 (due 1 July) will remain the same. I recently attended a RAHS seminar with representatives from the Australian Tax Office to discuss concerns regarding the GST. MHS has obtained an Australian Business Number. After 1 July the committee will evaluate the impact of GST on our activities and will keep you informed of any developments.

**Diane McCarthy, Treasurer**

## GANNON'S INN & VAULT

Gannon descendant **Anne Carolan** has pointed out that the 1850s Pulteney Hotel, now Tempe Hotel and under threat of losing much of its original fabric, was **not** built on the site of **Gannon's Inn** (see March newsletter). The Inn appears on early maps (see c. 1842 map page 47 *Heritage 2*) on the western side of Cooks River Road, now Princes Highway, opposite Hart Street. The Inn was eventually demolished in 1913 to make way for the Tempe Tram Depot, constructed on the corner of Princes Highway and the present Gannon Street.

Anne, in her articles in *Heritage* 1, 2 and 5 described the usage of Gannon land holdings in Tempe between the early 1840s and 1927. Further research has revealed more about old Gannon's Inn and the original Sts Peter and Paul's Catholic Church, and will be the subject of an article in a future issue of *Heritage*.



*Pre 1905. Gannon's Vault with the 1858 Sts Peter & Paul's Catholic Church in Station (originally Unwin) Street Tempe. Church demolished in 1917 but two storey house at #71 still stands (Discovered by Mark Matheson among RAHS glass slide collection. Reproduced with permission of Royal Australian Historical Society 133 Macquarie Street Sydney).*

MHS Members will have received a **questionnaire** (two in joint membership households) and a **self-addressed envelope** with this newsletter. Included is a copy of the Society's objects as set out in our Constitution. The committee asks that you spend a few minutes to fill it in. This is your chance to provide some feedback and have some input into the Society. Use an extra sheet if necessary. As 2000/01 fees are due soon you may wish to enclose payment with your completed questionnaire.



## HERITAGE WATCH

\* **St Maroun's College** 194 Wardell Road Dulwich Hill is planning a staged development into a new high school. They have applied to demolish three Federation houses to build a car park for 64 cars with an entry/exit in Challis Avenue and to create an entry in the Convent's boundary wall. The **former Carmelite Monastery** is included in the Heritage Study Review and will be part of the proposed Dulwich Hill Conservation Area. The Society has written to Council expressing concerns about the impact on heritage items, the scale, lack of a master plan, and the fact that the scheme will replace open grassed areas with poor quality hard paved courtyards. Following vehement resident objections (including a petition with 100 signatures) the matter has been referred for conciliation.

\* In the wake of overwhelming community opposition **McDonalds Stanmore** has withdrawn its current submission to extend and develop the site (see May newsletter), though a revised DA will be lodged shortly.

\* Plans by **Newington College** Stanmore to add a third storey to the Music Building which is adjacent to the 1877 Founders Wing (Thomas Rowe), are most likely to be approved despite its negative impact on Middleton Street residents and the fact that the extension is too high and bulky and will impinge upon the visual integrity of this significant old building.

\* **Jasmone** 89 Victoria Road Marrickville (visited on a MHS walking tour in August 1996) was a small timber cottage considered to be c. 1850s by the late John Zinsmeester. Though without a listing, this little gem has been unceremoniously demolished – another reason for members to be vigilant and bring threatened significant buildings to the attention of the Heritage Watch committee.

\* Members are urged to lodge submissions by 23 June re the DA to redevelop the former **Eversleigh Hospital Site Petersham**.

\* Forthcoming restoration of John Verge's 1836 **Tempe House and curtilage**, and the more recent **Chapel** is good news. However the North Arncliffe Master Plan – to accommodate 2500 people – submitted to Rockdale Council by Landco is totally unacceptable. This gross, insensitive overdevelopment proposes a massive 13 storey semicircular block of units around Tempe House plus a separate 13 storey block abutting Cooks River.

## BOMERA & TARANA DECOMMISSIONED

These two naval establishments, just like ships of the Royal Australian Navy no longer required, have been decommissioned and are for sale. Located in Wylde Street, Potts Point, MHS toured this Navy Precinct of HMAS Kuttabul and its reinstated Clarens Gardens, Bomera, Tarana, Kismet and Jenner in March 1993 ("The Villas of Woollloomooloo").

We found two connections with our local area. Bomera, built for merchant William McQuade in 1856 by architect John Hilly, is an Italianate

mansion, the fashionable style in the late 19th century. The separate stables and servants quarters at the rear are also for sale. A two storey ballroom was added in 1865 and a Bryceson Bros. of England organ was installed around 1874.

Neighbouring Tarana built c. 1865 was also occupied by the McQuades. Originally Wylde Street terminated at Tarana's iron palisade fence when these houses on the Point had terraced gardens down to the harbour waterfront. In 1942 Garden Island was joined to the mainland here at Potts Point and the villas became the property of the RAN whilst Wylde Street was extended to Woollloomooloo Bay.

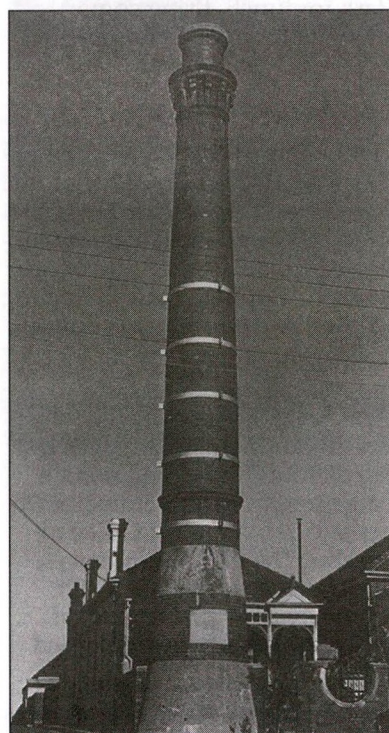
In 1908 the organ was transferred to Tarana to entertain the visiting American 'Great White Fleet' and remained there when acquired by St Brigid's Church Marrickville around 1921 (Advertisements claimed "the organ is acknowledged to be the finest instrument in the Southern Hemisphere").

And the second connection? Located in the remnant garden of Bomera we saw a sandstone bust of Lord Nelson originally from George Johnston's Annandale Farm, now present day Stanmore. A son, Robert, was the first Australian-born to join the Royal Navy. The Nelson bust, stone lions and sphinx are all in safe keeping with a plan to install them in the beautiful Clarens Gardens. So another layer of occupation awaits these heritage villas.

Shirley Hilyard

Come to **Park Sunday** 9 July from 10 am at Sydenham Green run by St Peters Sydenham Tempe Neighbourhood Centre & Marrickville Council. Stalls and activities. Details 9550 6541.

## WINTER TRIVIA QUESTIONS



a) Who is the Princes Highway named after & where in Sydney does it start?

b) Marrickville LGA has several such structures. Where is this one? Tell us of others!

(Richard 9557 3823)



## PARK WATCH – TWO CADIGALS!

A recommendation by Marrickville Council (reported in April newsletter) to rename **Richardsons Lookout Marrickville, Cadigal Lookout** has been undermined by some significant issues. Firstly there have been objections to the proposal raised by descendants of Warren Cook Richardson, who led a campaign to clean up the park which had been extensively used as a rubbish dump prior to the lookout being thus named in 1936.

Naming parks, reserves and lookouts after former councillors has long been a widespread practice. Whether it happens because of genuinely good works – as in the case of Richardson – or merely as a recognition of service is not always clear. After a couple of generations the memory and accomplishments of a bygone councillor are invariably forgotten especially in today's world of increased mobility and population turnover.

A case in point is Richard Gendle, Mayor of Petersham (1918-1920) for whom in 1937 according to *The Story of Petersham* 1948 the Richard Gendle Memorial Band Rotunda at Johnson Park Dulwich Hill was named "in honour of a former mayor and alderman who rendered valuable service to the citizens". The recent refurbishment of Johnson Park no longer honours Gendle's memory (Are there no outraged Gendle descendants?).

A second issue is that just outside Marrickville LGA lies **Cadigal Reserve**. It is in Summer Hill in the Ashfield LGA, on the border of Lewisham next to where the old Whipple truss bridge crossed the Hawthorne Canal. An Ashfield Council plaque (23 September 1994) for the Year of the World's Indigenous Peoples 1994 states "Cadigal Reserve has been named after the Cadigal (Eora) Group of the Koori people which fished and camped along these estuaries long before European settlement of the Ashfield District".

A second Council plaque dated November 1997 honours "the late Burnum Burnum for his services for the Indigenous People of Australia and as a recognition for his contribution to the reconciliation process. In recognition of repairing the separation of Aboriginal Children from their families and their future reunion".

The Cadigal band of Aborigines are said to have roamed "between Port Jackson and Botany Bay" – this is vague, as the junction of Port Jackson and Parramatta River is unclear. It is not known how far west the Cadigal band's territory extended and there are conflicting views as to whether the band frequented the Marrickville area at all.

Whilst recognition of prior Aboriginal ownership and/or occupation is important especially in the current climate of reconciliation, due attention needs to be paid to not arousing the sensibilities of families whose forebear may still be remembered for making significant contributions; to not creating a number of public spaces with the same name; and to ensuring the history and geography are correct.

Richard Blair

## OUR LAST MEETING HISTORY OF MARK FOYS

On Saturday 27 May **Francis Foy** great grandson of Irish immigrant Mark Foy, gave a fascinating illustrated talk on the history of this remarkable family which came to Australia in 1859 and eventually established *Mark Foy's*, modelled on one of Paris' most famous department stores, and a hotel health resort the *Hydro Majestic Hotel* at Medlow Bath, inspired by German spas.

From 1870 Mark Foy's senior traded in Collingwood as Foy and Gibson, but died while in San Francisco, leaving his son Francis with the partnership. In 1884 Francis moved to Sydney and established *Mark Foy's* in six adjoining terrace shops in Oxford Street adopting his father's name. Francis was a colourful and competitive merchant with sound business principles, never borrowing from banks and always dealing directly with manufacturers. He also treated his staff well buying land at Killara and a cottage at Springwood (later to become Norman Lindsay's house) for staff recreation.

At the end of the 19th century Francis' brother "young" Mark sold his share in the partnership and bought the Belgravia Hotel which became the fashionable *Hydro Majestic*. Architects McCredie & Anderson were sent to France to investigate retail stores and in 1909 the foundation stone for the distinctive *Piazza Store* on the corner of Elizabeth, Liverpool and Castlereagh Streets was laid by Sophie Foy (grandmother of Juanita Nielsen). Sydney's first opulent department store was constructed of face glazed bricks with a cleverly designed glass roof enabling showroom fabrics to be displayed using natural light. They built a furniture emporium on the opposite corner of Elizabeth Street and a warehouse in Goulburn Street.

The business continued to flourish after Francis died in 1918 returning from the Melbourne Cup. In 1928 because of increased commuter traffic generated by the new underground railway system the main building was enlarged with four new levels added. Many of the 65 MHS members and friends present (including a 1940s employee) shared their memories of *Mark Foy's* and Michael Pearce produced a surplice bought from the store. In 1967 the company was acquired by McDowells and in the 1980s the distinctive building was refurbished as the Downing Centre Law Courts. Thanks to Lu Bell for recommending Francis Foy whose talk on his remarkable family will be long remembered.

Peter Cousens

### SHRUBS AND TUBS GARDEN CENTRE

130-136 New Canterbury Road Petersham • Tel 9560 3884



Old Fashioned Climbers and Roses, Cottage Garden Plants, Camellias, Azaleas, All Herbs, Terracotta Pots, Lattice. Everything to keep your garden healthy



## THE MOULDERING OF MISS HAVISHAM

(*The Mouldering of Miss Havisham* by MHS member Patricia Kennedy will be launched at Shearer's Bookshop Gordon on Tuesday 13 June Greater Glider RRP \$14.25 includes GST.)

The inspiration for *The Mouldering of Miss Havisham* came from a snippet in *Marrickville People and Places* (Meador, Cashman & Carolan): "One of the more interesting graves in the Camperdown Cemetery is that of Eliza Emily Donnithorne, reputed to be the model for the Dickens character in *Great Expectations*, Miss Havisham". I have always relished grotesquery and the link between King Street (Cafe Heaven) and Miss Havisham's mouse-tunnelled cake validated our move into the Newtown area.

Of course, it's not only grotesquery that supplies Miss Havisham with her pull. Haven't we all experienced the urge to hibernate at least once in our lives? Haven't we all been members of that vast club of the dumped, depressed and despairing? Later when I learnt that British Dickensian scholars rejected the Eliza connection, I thought *yeah, that'd be right*. Every Republican hair on my left-inclined skull bristled at this unavenged appropriation of Australian, specifically Newtown, culture.

So at first I played with the idea it was Mr Dickens himself who jilted Eliza. Why not? He had all the qualifications of a faithless bastard. Not only did Dickens have an affair with the actress Nelly Ternan who was blond (inevitably) and decades younger than his wife Catherine, he enjoyed intense relationships with **both** his sisters-in-law Georgina and Mary. Ultimately I decided that the ID of the fiancé was irrelevant and I relegated Mr Dickens to a distant back seat, but the first, largely abandoned version of the book was by far the most fun to write.



*The Mouldering of Miss Havisham* targets a young audience and is set in contemporary Newtown. Stella Ellis, the central character, has moved with her mother to the Cambridge Apartments which have been built on the site of Cambridge Hall, Eliza's old home. They have also taken over the management of the ground floor cafe and it is here that Eliza makes her most notable impact. When Stella is not out there exorcising ghosts, she's getting busted for dodgy activity or struggling with romance.

Most of the action is set in and around King Street whilst Camperdown Cemetery is exploited for both its history and its Gothic atmosphere.

Patricia Kennedy

**PRESIDENT** Robert 9568 3079  
**TREASURER** Diane 9588 4930  
**HERITAGE WATCH** Scott 9559 5736  
**NEWSLETTER** Richard 9557 3823

## IN & OUT OF (THE) SOCIETY

\* Ed Jones from Gopher Graphics (formerly Harlow Printing) took over the printing of this newsletter in August 1994 and from September 1994 **Kelly Cook** worked with your editor on most newsletters. Kelly was married on 3 June to fellow employee Steve McManus at St Pauls Burwood and they have ventured off on an extended honeymoon / working holiday. Thank you Kelly and best wishes from MHS for a wonderful future.

\* *St James 1824-1999* by Kenneth Cable & Rosemary Annable won a commendation in the Print category at this year's EnergyAustralia National Trust Heritage Awards (ie it came second). It was designed by **Mark Matheson** and printed by **Gopher Graphics**.

\* Congratulations to member **Bob Horton** for winning the Adult Section of the inaugural Friends of Marrickville Library Short Story Competition awarded on 25 May. Bob's story *A Promising Boy* is described as "a tragic story of children in the 19th century brick industry". 58 entries were submitted including 40 for the Children's Awards. The library is publishing a collection of the winners and commendations.

\* New member **Irene Higham** of Kew, Victoria while researching her Gannon family history at the State Library of NSW came across the two Marrickville books and tracked down co-author and distant relative Anne Carolan. On joining MHS Irene wrote that locating the information from those books and the relevant Heritage journal articles must have saved her "18 months of research".

\* Norman McVicker reveals that **Farrow Lane Tempe** (see May newsletter) which runs off Zutton Lane was named after Jim Farrow who owned a butcher shop on Princes Highway and was an alderman on St Peters Council (1926-41). His son also called Jim took over the business from his father. It is not known whether they were related to the John/Mia Farrow side of the family. Peter Zutton was an Austrian immigrant who from about 1908 ran a business on the corner of Union Street and Princes Highway Tempe making snow drop cones, the first ice cream cones in Australia.

\* The recent death of **Eva Jagger** mother of Mick, prompts recollection of the April 1995 newsletter report of our Mick Jagger connection - Eva (nee Scutts) was born in Petersham. We are still trying to ascertain where Mick's maternal grandparent's three pre 1917 local houses were.

Members are invited to attend:

• **Newington Concert Sunday 18 June 3 pm** in The Prescott Hall. The Hills Chamber Ensemble present a chamber music recital. Only \$15, \$8 concession.

\* \* \* \*

• **St Peters Anglican Church Winter Concert Sunday 25 June 4.30 pm** St Andrews Cathedral organist Michael Deasey and accomplished flute player Sally Treloyn. Entry by donation.