

MARRICKVILLE HERITAGE SOCIETY INC.

CAMPERDOWN DULWICH HILL ENMORE
NEWTOWN PETERSHAM STANMORE

LEWISHAM MARRICKVILLE
ST PETERS SYDENHAM & TEMPE



Our February Meeting

George Caleb Hedgeland: the man who surveyed
Marrickville streets – a talk by Angela Phippen
Saturday 24 February 10.15 for 10.30 am
Herb Greedy Hall, 79 Petersham Road Marrickville

During the 1870s and 1880s surveyor George
Hedgeland surveyed the main streets of the then
municipalities of Marrickville, St Peters and Petersham.



However, he was
first and foremost an
artist having
attended the Royal
Academy (London)
and, during the
1850s, created stained
glass windows
throughout England.
Some thought his
windows were the
'best pieces of
Victorian stained
glass yet produced';
others thought him
incompetent. In 1859
he emigrated to

Australia and spent the next eight years in country
Queensland working with and for Biddulph Henning
during which time he married Biddulph's sister Annie.

Angela Phippen is Local Studies librarian in Sydney
and former librarian at the Society of Australian
Genealogists. Her illustrated talk will showcase the
extraordinary life and work of George Hedgeland.

MHS Weekend away: 13-15 April Carcoar Coach Tour

3-day weekend coach tour to the Central West of
NSW. Carcoar . . . 'the town time forgot' since the
1800s . . . is our main destination, with more to see
and do *en route*. Cost \$420 per person (twin share)
includes:

- 3 days of activities and round trip by coach
- all meals (breakfasts, lunches and dinners)
- 2 nights' accommodation – clean, comfortable, all
ensuite
- All entry fees, guides and talks.

Bookings essential by 14 March (payment required
by end of March). Book with Lorraine 0416 224 472,
or <lbeach@iprimus.com.au> for full details and a
brochure.

Heritage 15 to be launched in March

Members are invited to the launch of our latest MHS
journal *Heritage 15* at 6 pm on Wednesday 21 March
at the heritage-listed Town & Country Hotel, corner
of Campbell Street and Unwins Bridge Road,
St Peters. Complimentary beverages and canapes
will be served. Article authors present will say a
few words if they wish.

Members can collect their complimentary copy of the
journal (one copy per membership). Members unable
to attend the launch will receive their copy soon
after. To reduce postage, perhaps you can collect for
another member. Details re public transport, parking
and sale price will be in the March newsletter.

This is a bumper issue – virtually twice as large as
previous issues and with extensive use of colour.
Articles cover the naming of Marrickville and its first
municipal council chambers and library; industrialist
John Plant Wright and his Marrickville factory;
some reminiscences of Old Newtown; the pageants
associated with Fatima Island and a Catholic
church in Tempe; World War I letters sent to Enmore
by two servicemen abroad; two nurses with local
connections who made their mark; the tribulations
of Fr Jerger; a unique collection of Henry Lawson-
related books; the history of *Hughenden Terrace*
in Stanmore; and the conclusion of the Winged
Victory timeline.

RSVP Richard on 9557 3823 or by email to
<heritagesociety@optusnet.com.au> by
Thursday 15 March: essential for catering purposes.

The Society congratulates MHS member **Noeline
Brown** for her 2017 Equity Foundation Lifetime
Achievement Award. Launched in 2009 the award
honours the achievements of a leading Australian
performer who has had a distinguished career and
been an inspiration to other Australian performers.

Members are invited to Burwood Historical Society's
talk at 8 pm **Wednesday 14 February** at *Woodstock*,
22 Church Street, Burwood on Burwood resident
Octavius Beale and his Annandale piano factory.

The future of Callan Park is in doubt now the state
government is replacing the 2011 Master Plan
(developed at much cost and time by the community)
with a Landscape Structure Plan. A public meeting is
on **Thursday 15 February** at 6:30 pm, Centurion
Lounge, Leichhardt Oval (Mary Street Lilyfield).
Enquiries: <focp.admin@gmail.com> or 0408 643 786

Heritage Watch: Changes re DA assessments

Recent changes to the Environmental Planning & Assessment Act by the NSW government mean that local councillors no longer have any decision-making power when it comes to determining Development Applications (DAs). Inner West Council (IWC) area DA assessments and determinations are now done by council staff, or in some cases, by an independent panel appointed by Council, called the Inner West Planning Panel (IWPP). DAs are referred to the IWPP for one of three reasons: the development is worth over \$10m, the DA receives ten or more individual objections, or the development seeks to breach key development standards [like building heights or site areas] in Local Environmental Plans by more than 10%. The four-person IWPP is comprised of planning and building experts, and a similarly experienced community representative.

The decision to take planning decisions away from local councillors seems to have been made to stop councils from approving proposals that are not of benefit to the wider community, often due to corruption or developer self interest. It does, however, reduce the opportunities for the community to influence the planning process, as councillors can no longer be readily enlisted as advocates to the forum where DAs are determined, nor can they call up a DA for review. Also, access to meetings of the IWPP is more restricted than council meetings: members of the public may address the IWPP, but only if they have already made a written submission on the matter to the IWPP, or council; and the IWPP only sits during business hours. It is important to note that the ten objections that are required to get a DA referred to the IWPP need to be *individual* ones, so that multiple copies of a form letter or petitions won't be counted as multiple submissions.

We thank Cllr Pauline Lockie, Independent, Inner West Council, for bringing these matters to the attention of residents.

Scott MacArthur

New listings on State Heritage Register

The Society has been formally advised that The Aboriginal Education Consultative Group (AECG) Office and Records, 37 Cavendish Street Stanmore has been listed on the State Heritage Register (SHR) with effect from 19 January 2018. This decision was made by the Minister for Heritage on the recommendation of the Heritage Council of NSW. The item was listed 'due to its heritage significance to the people of the state of New South Wales'.



The Statement of Significance indicates that: 'The NSW AECG has historically turned the tide on the exclusion of

Photo © Inner West Courier
(30/1/18)

Our November meeting: 25 November Sydney cemetery adventures with Lisa Murray

Dr Lisa Murray, City Historian at the City of Sydney Council, has a passion for public history and, in particular for cemeteries, a passion well evident and certainly infectious for her audience. Sydney was at the forefront of cemetery design and organisation in the 19th century. Cemeteries have much to teach us about architecture, art, garden design, history and belief and they form beautiful open spaces. Rookwood's original 200 acres was the epitome of garden cemetery design and cemetery tourism became a popular pastime.

Lisa and Mark Dunn (who took all the photos) spent every weekend (no matter the weather) over eight months, surveying cemeteries as far as the Nepean-Hawkesbury River to produce *Sydney Cemeteries: a field guide*. Her final selection of 101 was based on a few rules: the cemetery must exist; it had to be a general or denominational cemetery; it had to be publicly accessible; be within the Sydney metropolitan area; and the bodies still had to be there. A few exceptions were made, such as the Old Sydney Burial Ground and the Tomb of Receveur at La Perouse.

This intrepid pair had only one opportunity to capture the essence of the place. The intention was to provide a practical guide to location and major distinguishing features, the aim to lure people to explore a cemetery they might not have ever visited and find for themselves the 'notables' buried there. Lisa was asked to nominate her favourite cemetery. This is a question much like a mother being asked to name her favourite offspring – one best avoided. She did, however, acknowledge growing to love 20th century cemeteries with their tendency to personalise memorials. She especially likes an aboriginal grave at Camden Catholic Cemetery which features a tree stump memorial. She rather likes St Paul's Anglican Cemetery at Canterbury (particularly for its flowers) and St Thomas's Anglican Cemetery at Enfield; whilst cemeteries at Cobbitty, Ebenezer, Ryde and Windsor received a special mention. We thank Lisa for her most informative and stimulating illustrated talk and being so ready to answer the many questions which followed.

Janice Garaty

* * * *

Aboriginal people from European education and provided the first Aboriginal Education Policy, support materials and actions to be produced and mandated in NSW schools. This policy was in fact the first Aboriginal Education Policy to be developed in Australia.'

The building is a late 1880s free standing Italianate Victorian terrace of three levels. Merchant John Bardsley built the house for his family which lived there for many years. In 1927, the property was sold and underwent several changes of ownership until 1974 when purchased by the Inner City Education Centre Cooperative Ltd. In 1990, the AECG moved in to share the premises with this group. In 1997 the ICECC closed and transferred the building to the NSW AECG.

Last week the *Inner West Courier* reported in brief that the brick sewer vent at 125 Corunna Road Stanmore had also been recently added to the SHR.

Richard Blair

Dulwich Hill BC and other bicycle clubs

As well as producing a quarterly magazine, the Royal Australian Historical Society (RAHS) brings out a journal twice a year, in June and December. The journal articles must adhere to strict guidelines, are peer-reviewed, subject to original research and must not have been previously published. Articles cover a broad range of historical subjects. The journal also carries several book reviews.

One of the articles in the December 2017 issue (Volume 103, Part 2) is titled 'Cycling Communities: bicycle clubs in Australia with an emphasis on Sydney, c. 1860s to 2000s' by Marc Rerceretnam PhD. Marc is an author and principal researcher at Yesteryear Heritage Research and was a councillor on Ashfield Council (2004-12). He joined the Dulwich Hill Bicycle Club (DHBC) in 2011 and oversaw the collation of its century-old archive. He is a keen time trialist and a vintage bicycle collector.

Marc's article on bicycle club formation in Australia focuses mainly on Sydney with an in depth study on the DHBC 'from its inception in 1908 to its regeneration a century later . . . [the article] shows how such cycling developed, grew, declined and revived'. Its 114 endnotes demonstrate the extent of the author's research, whilst the article is replete with photographs, one which is reproduced below.

Richard Blair

Summer Trivia Answer

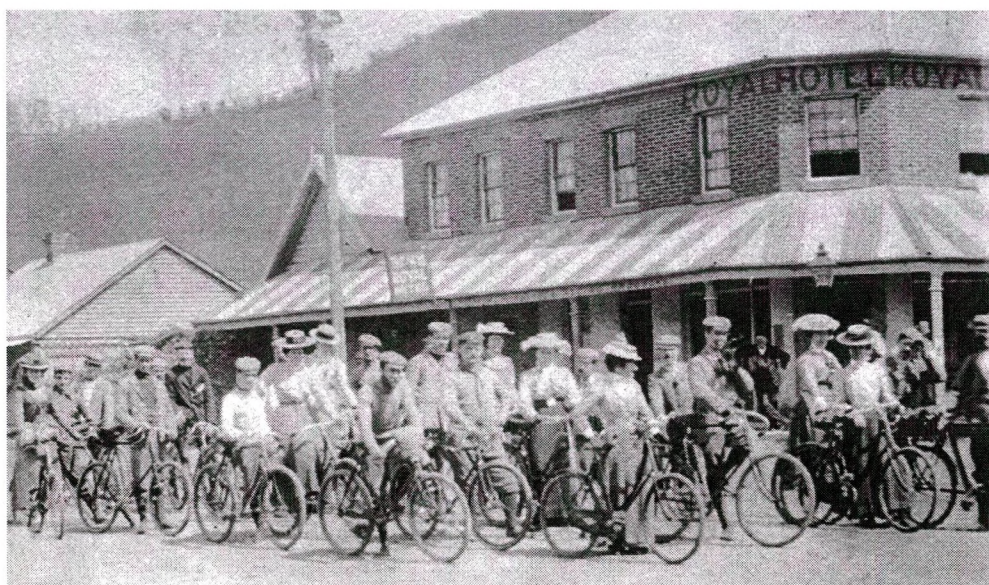
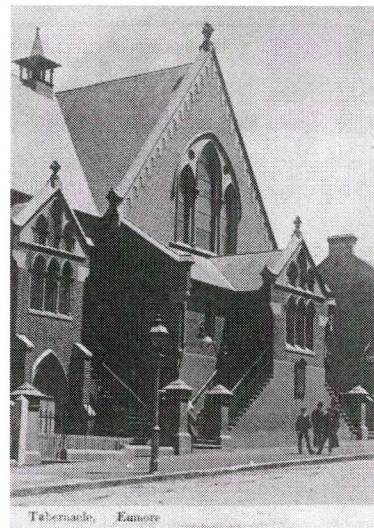
This Church of Christ Tabernacle opened at 17-21 Metropolitan Road, Enmore on 24 October 1886. The church was extended in the first decade of the 20th century. It was popularly known as the Enmore Tabernacle. In recent years it has been the Enmore Fijian Seventh Day Adventist

Church. For further information on its history see Lyn Collingwood's article, 'The Bible bashers: the Churches of Christ in the Marrickville area' in *Marrickville: a past worth preserving* (Marrickville Heritage Society, 2011).

It was identified by Peter Dixon (for many years Minister at the Church of Christ, Illawarra Road Marrickville), Anne Morgan, Peter Chessell and Robert Hutchinson (whose postcard collection includes some of the church).

(© Les Logan Collection)

Richard Blair



Petersham's Waratah Rovers Cycling Club on a touring ride to Picton in 1896

(Image scanned from photo in RAHS journal © State Library of NSW)

Pot Luck Christmas Dinner

The Petersham abode of John and Louise Mara was the perfect setting for our Pot Luck Christmas Dinner on Saturday 2 December. On this thoroughly enjoyable evening Robert Hutchinson and Lorraine Beach supplied the Lucky Door prize which was won by Mary Oakenfull. Special thanks to Lynne Greenwood, who subsidised the festive ham, to Scott for his presidential washing up, and Lorraine and Mary for co-ordinating culinary and other aspects. Many thanks to Louise and John for opening their house for our time-honoured annual event.

Diane McCarthy

From left: Louise Mara, Robert Hutchinson, Mary Oakenfull & John Mara (photo: Scott MacArthur)



Calendar of MHS events

Saturday 24 February

George Hedgeland – the man who surveyed Marrickville streets: talk by Angela Phippen

Details on front page

Wednesday 21 March

Launch of *Heritage 15*

Details on front page

Saturday 24 March

To be advised in March newsletter

13-15 April: Carcoar coach trip

Details on front page

River Dreams: the people and landscape of the Cooks River by Ian Tyrrell

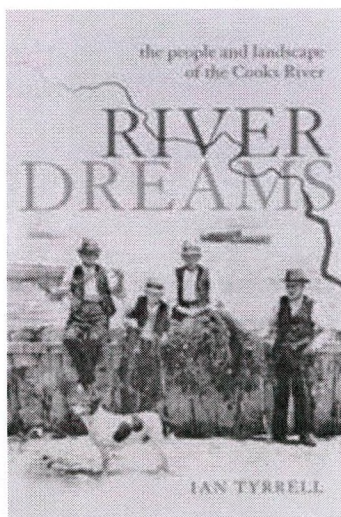
When Ian Tyrrell spoke to a very large gathering at the MHS meeting in February last year he titled his talk 'Cooks River: An Unnatural History' and wrote that: 'as one of Australia's most altered rivers, it as been the site for many understandable but often wrongheaded human dreams to transform it . . . today's river, the site of many schemes and dreams for improvement and rehabilitation.'

Ian's long awaited book on Cooks River is being launched at 6 for 6.30 pm on Wednesday 14 March at Gleebooks (upstairs), 49 Glebe Point Road Glebe. The launch will be in the form of a conversation with author and historian Ian Hoskins (also a past MHS guest speaker). Bookings essential either on 9660 2333 or online via the Gleebooks website. Pay on the night: \$12, \$9 concession. There will be a more local event on 7 May which will be publicised closer to the date.

Paperback, UNSW Press, 304 pp., 234 x 153 mm, \$40.



Founding MHS member
Ian Tyrrell and cover of book
(© Gleebooks)



Summer Hill Flour Mills 2 pm on Sunday 18 March

MHS members are invited to join the Ashfield and District Historical Society to hear Dr Michael Kelly, among others, talk about the history and heritage of the site, and the architectural response to the heritage. Access to the silos is via Lewisham West Tram Stop or Edward Street, Summer Hill.

Entry: Gold coin donation at the door.

RSVP: <adhs@tpg.com.au> or 0404 018 178.

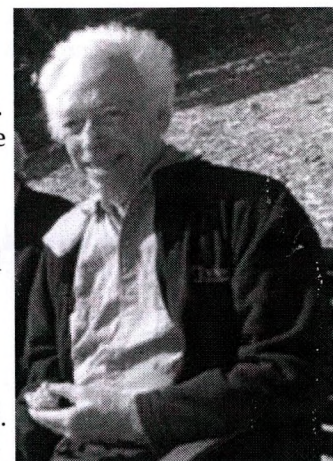
Vale John Harold Blattman

John died suddenly on 13 November 2017 aged 87 of an aneurysm. His funeral at the Lewisham Nursing Home chapel was well attended. John had lived at the Lewisham Aged Care Hostel since October 2014 after moving from the nearby Village Court retirement centre. He had previously lived in Andreas Street Petersham for a long time after moving from Goulburn around 1938 with his parents and two sisters. He attended St Thomas's Primary School and then Christian Brothers High School, Lewisham. He was a very bright student and dux of the high school. He started with the NSW Railways and worked there all his life as an analytical chemist. Apparently a group of American railway engineers on a study tour found it hard to believe that John performed so many functions which in the USA were done by many different specialists. He retired in the early 1990s.

John was an active member of St Thomas's Church parish and this was a most important part of his life. His generous donations, include a brass plaque for a memorial plot (adjoining the school) for Benedictine priests and brothers buried on site in the 1840s. He left his estate for the maintenance of the church's beautiful stained glass windows.

John travelled extensively and was keenly interested in the arts – music, opera, the theatre and art galleries. He held subscriptions to the Sydney Theatre Company and the annual Sydney Film Festival. He will be remembered as a most kind and considerate man, always ready with a smile and wave – for him everyone was a friend. Neither John nor his sisters married.

John Mara



© Lewisham Retirement
Hostel Catholic Healthcare

Editor's note: John and his sister Betty joined MHS in 1985 and Betty became a newsletter runner. After Betty died John took over her run and continued until recently. He toured Norfolk Island with MHS in 1998.

* * * *

The Society notes the passing of **John Morris** who died in early December 2017 aged 86. Dubbed 'The man who helped save Sydney', he held key positions with the National Trust from 1965 to 1982 during which time membership of the Trust more than quadrupled and the number of committees rose to over 50. He had many alliances but with Jack Munday he tried to save – and largely succeeding in saving – many Sydney heritage buildings and areas at risk. He received the Trust's Lifetime Achievement Award and 'left an enormous legacy of which we are the beneficiaries'.

President Scott 0416 152 501
Heritage Watch Scott 0416 152 501
Treasurer Diane 9588 4930
Newsletter Richard 9557 3823