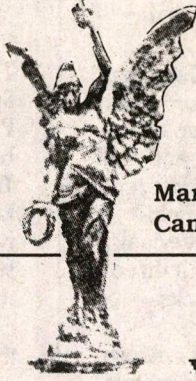


# MARRICKVILLE HERITAGE SOCIETY

Covering Dulwich Hill, Enmore, Lewisham,  
Sydenham, Tempe and parts of Newtown.

Marrickville, Petersham, St Peters, Stanmore,  
Camperdown and Hurlstone Park.



## OUR NEXT MEETING Heritage Colour Schemes for Old Houses

SATURDAY MARCH 23, 10.30AM  
AMENITIES ROOM, PETERSHAM TOWN HALL

Traditional colour schemes are as much part of the character of an old building as cast iron 'lace', chimney pots and timber fretwork. There are few things that can make as much difference to the value of an old house as the right colour scheme. If you are restoring an old home or simply interested in period decor then come along to our next meeting and get advice from restoration expert Michael McCowage.

Michael's specialty is color and interior decoration but he also advises on most aspects of restoration, including designs for traditional fences, and gates, finials, fretwork, verandah columns, tile patterns and garden layout. Michael will accompany his talk with a slide presentation and he will take us on a short walk to show both good and not so good examples in the area.

## OUR NEW JOURNAL - HERITAGE 6

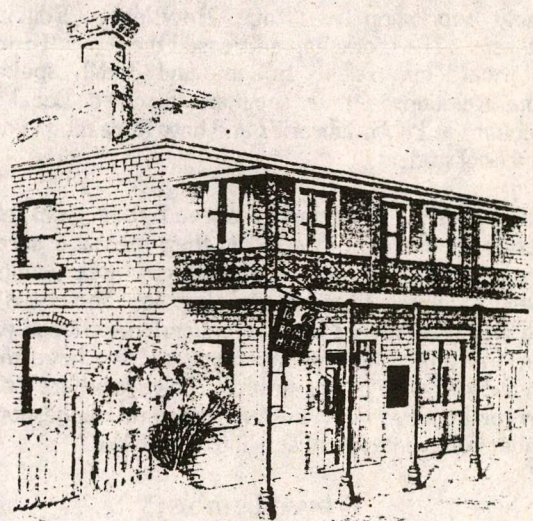
*Heritage 6* is out soon. The latest edition of the Society's journal is bigger and better than ever. There are 11 articles covering a diverse range of local history subjects including natural, architectural, aviation and theatrical history. Some of the articles in this issue include: Return of the Native; Birds in the Marrickville Garden; Marrickville's Bridges- An Illustrated Tour; Look Mum, It's a Flying Machine! Mascot Before the Jets and Jumbos; The Pocket Playhouse 1957-1973. The Journal also includes a wealth of historical photos.

## CONTRIBUTIONS PLEASE!

The editor would like to hear from members who have news or information for the newsletter. Please contact Judith on 560 1751 or speak to executive members at our meetings.

## COMING EVENTS WEEKEND TRIP TO HILL END

We are planning a weekend trip on April 20-21 by bus to historic Hill End, a remarkably unchanged relic of the gold rush. Hill End Historic Site, now managed by the National Parks & Wildlife Service, is an integral part of a living community. Over one hundred people live in and around Hill End. Many of these residents trace their ancestry back to the people who lived and worked on this famous goldfield last century. Hill End was proclaimed a historic site in 1967 in recognition of its outstanding heritage values. One of the most remarkable things about the town is its historical authenticity. Almost all of the buildings date back to the boom years around 1872. We will be staying at The Royal Hotel, the last of the town's 27 pubs. Cost of the weekend will be approximately \$100 per person. For further information contact Geoff on 568 3029.



The Royal Hotel, the last of Hill End's 27 pubs.

## CALENDER OF EVENTS

- APRIL 27: Excursion to historic Waverley Cemetery and lunch at St Marys Waverley
- MAY 3: Members Evening, Dinner and tour of Parliament House, Sydney with our local member Andrew Refshauge (subject to change if state election announced).
- MAY 25: Guest Speaker to be confirmed
- JUNE 22: Annual General Meeting
- JULY 27: Excursion to Rouse Hill House



## OUR LAST MEETING Visit to Performing Arts High School

At our last meeting on February 23 we visited Newtown High School of the Performing Arts. Principal Robyn Amm escorted some 25 members of the society on a tour of the school. It comprises some old and new buildings and the architect has been very successful in marrying the different styles. She has created a delightful, spacious whole, including the airy new administration block. A circular walk overlooks a large tree-studded area while linking the older 1923 three-storey building with the newer library and science blocks.

We sat in the Performing Arts Theatre where Ms Amm talked about the student composition of this innovative secondary school. It is the local secondary school for students from the Newtown area while it also provides the opportunity for a limited number of selected students to develop their skills, understanding and knowledge in dance, drama, and music.

We visited the oldest part of the school, the beautiful old stone buildings which originally housed the Newtown Superior School and now contains the dance studio, drama space, music rooms and art studio. We finished our tour in the common room over morning tea. Thanks to Ms Amm for her hospitality.

- Marilyn Kelly.

## Historical or Hysterical

Guest speaker at a recent Royal Australian Historical Society workshop was our Newsletter Editor Judith Matheson. The workshop addressed the topic "Historical or Hysterical-Your Public Image" and Judith spoke about Media Relations. Other speakers covered Local Studies Collections in Public Libraries and how to reach primary and high school students.

Judith reports: "Participants agreed that local historical societies need to do more to get their message across to a wider audience and that we need to get more young people actively involved. Marrickville Heritage Society is in fact doing well. We have a large membership, although we'd like to see more members at meetings, and we have members from a wide range of age groups. However there's plenty of room for improvement and we welcome suggestions from members on what type of activities they'd like."

## New Members

Peter Ross, St Peters; Brian Madden, Kingsgrove; Allan Sutton, Budgewoi; Gwen Whitie, Dulwich Hill; Mrs S. Pinson, Manlyvale; Mr P. Cree, Lewisham; Pearl Lowe, Petersham; Francis Shinn; Chris & Chris Rizos, Petersham. Sadly new member Joe Ryan recently passed away.

**SACRED IMAGES**  
*A Mixed Media Exhibition*  
March 6 - April 3

**ARTIST: PENNY McKAY**

**MARY REIBEY**  
**INTERIORS & GALLERY**

224 ENMORE ROAD, ENMORE  
(02) 516 4902

## The Beginnings of Suburbs: Tempe

Tempe took its name from the home of Alexander Brodie Spark which was built in 1835. Spark laid out the streets of St Peters and Tempe in the 1840s and named his house after the beautiful vale of Tempe which was located beneath Mount Olympus in ancient Greece. The settlement of Tempe was known as Cooks River until the 1880s. Tempe was a popular resort in the 1880s and, with the opening of the railway station, large crowds flocked to the tree-lined Cooks River, then considered one of the more attractive resorts of the colony for swimming and boating. No one now swims in the polluted Cooks River, but boating is still a popular activity at Tempe. The Cooks River Motor Boat Club, founded in 1917, was one of the first clubs of its kind.

Excerpt from *Marrickville Rural Outpost to Inner City* by Richard Cashman and Chrys Meader. Published by Hale & Iremonger. Copies of this superb book are available at Society meetings for \$29.95 and profits go to the society.

## A Taste of Marrick

In the September newsletter I described my visit to the village of Marrick in the Yorkshire Dales, where I ate 'Dale Pie', a hearty treat, and the food of cricketers, 'vintnries', and Grand Old Dukes. It was made from a traditional recipe by Mrs Sutcliffe who runs the only accommodation in the village. When Thomas Chalder, the founder of Marrickville, came to live in Australia, one can only wonder if he brought the recipe with him! The traditional Aussie meat pie may be a descendent of Yorkshire's Dale Pie.

### DALE PIE

#### Filling

500g (1lb) minced beef or lamb  
500g (1lb) vegetables (frozen or fresh, peas, carrots, potatoes etc)  
1 onion  
salt, pepper, herbs to taste  
teaspoon mustard and/or horseradish sauce  
300 ml (1/2 pint) gravy or stock  
Fry the onion and the meat, then add the vegetables, gravy and other ingredients, and cook for a short time. Place in pie dish.

#### Pastry Top

250g (1/2 lb) self raising flour  
125g (4oz) suet  
1 egg  
Mix together, add water or milk, roll out and place on top of pie dish, cook for 30 minutes or until crisp on top.

-Geoff Ostling

## How to Subscribe

It's only \$12 for individuals, \$18 for households and institutions and \$6 for students and pensioners. You will receive copies of our newsletter (either posted or delivered to your door) and our journal *Heritage*. Your subscription is valid for the Society year from July 1 each year. The Heritage Society holds regular meetings on the fourth Saturday of every month. Write to P.O. Box 415 Marrickville. Enquiries to Geoff on 568 3029.