

MARRICKVILLE

HERITAGE

SOCIETY

Covering Dulwich Hill, Enmore, Lewisham,
Sydenham, Tempe and parts of Newtown,

Marrickville, Petersham, St Peters, Stanmore,
Camperdown and Hurlstone Park.



OUR NEXT MEETING

**EXPLORE OUR OLDEST CAMPUS
SATURDAY 28 SEPTEMBER, 10 AM**

MEET AT SYDNEY UNIVERSITY

Not just a tour for the academics, this is an opportunity to explore Australia's oldest and greatest university, established in 1850. The **Gothic Revival** buildings of the main quadrangle (pictured) blend with the more modern architecture to reflect the University's grand tradition. The history of the fine buildings will be explained as we tour the campus. The stained glass, carved cedar and intricate stonework are considered the finest in Australia.

We will meet at the clock tower, part of the main quadrangle building, at 10 am. The clock tower is only a few minutes walk from the main entrances on Parramatta Road or City Road. Buses run regularly along both these roads. After the tour, members may care to picnic in the grounds of the university or take a stroll to the shops along Glebe Point Road. Cost is \$8.

Booking and transport inquiries to Judith on 560 1751.

COMING EVENTS - HARBOUR CRUISE

One of the highlights of the Society's calendar, our annual harbour cruise, will once again be held aboard the *Silver Spray*. The date is Monday 30 December 1991, and the cost is a very reasonable \$25. Anne Carolan is taking bookings on 417 4862.

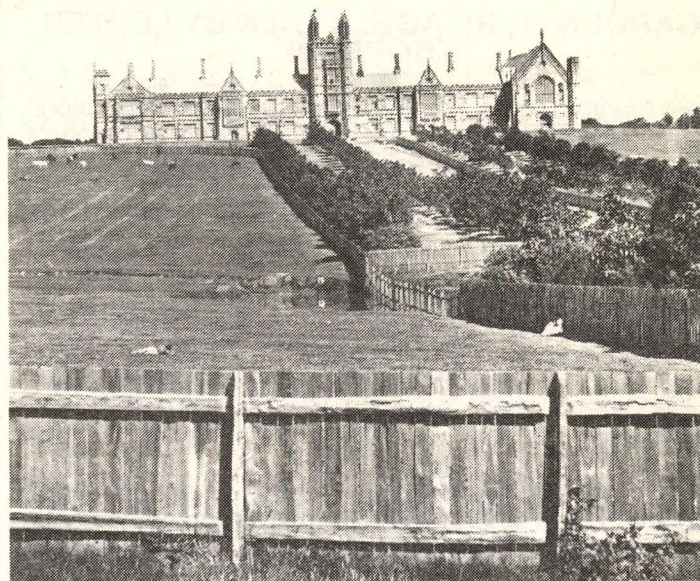
MARRICKVILLE FAIR

The Marrickville International Fair and Market Day will be held on Saturday 21 September along Marrickville Road. The Society will have a stall, so if you can help on the day or if you have saleable goods such as plants, jams, or bric-a-brac, please contact Shirley on 569 1768.

MARRICKVILLE COUNCIL ELECTIONS

Attitudes to Heritage

Marrickville Heritage Society has polled all candidates in the forthcoming council elections on a range of important heritage questions. With your newsletter this month you will find a separate page listing questions we put to the candidates and a summary of their responses. The election is on 14 September.



Sydney University pictured in the 1870's when the grounds were still semi-rural. Photo from "Stained Glass and Stone" by Bertha Mackenzie.

COOKS RIVER FESTIVAL

Thanks to all those who donated goods or helped on the Heritage Society's stall at the **Cooks River Festival** on 25 August. The day gave us the chance to promote the Society and its aims and to boost our funds. Thanks to Margaret, Sue, Fred, Joyce, Jeannette, Mary, Geoff, Gwen, Judith, David and Shirley.

MARY REIBEY INTERIORS & GALLERY

MOSTLY FRENCH

Recent drawings by
HOWARD DARE
24 September - 18 October

ALL WELCOME

TO THE OPENING

6-8pm Tues 24 September

224 Enmore Road, Enmore
02 596 4902
Hours: 11-4 Wed Sat Sun
11-7 Thurs Fri





OUR LAST MEETING

GARDEN HERITAGE: A TALK BY LESTER TROPMAN

Last month, Lester Tropman, a member of the Historic Gardens Society, and a specialist in the restoration of old gardens, gave the society an intriguing talk on the history of garden styles and types. The garden styles he described evolved from Geometric, with its neat layout of paths and lawns, through Arcadian, the romantic landscape typical of the grand English tradition; Picturesque, where the focus is on built additions to the garden, such as pavilions and statues; trending to Gardenesque, with the emphasis on specimen plants. High Victorian style is an extension of Gardenesque, while Boom style is the ultimate "over the top" elaboration.

These styles were applied in a range of garden types: Botanic, Cottage, Suburban, Formal, Mountain Retreats, Terrace and Villa Gardens. Lester described a variety of historic gardens to illustrate these styles and types, in Sydney, rural NSW and other states. His descriptions and illustrations emphasised several differences between gardening today and in the past. Water was a major problem in the past, and as many early pictures show, the typical condition of most garden beds was bare earth between specimen plants - ground covers were little used. The emphasis on built garden elements or decorative features, at least in larger gardens, was striking - rustic fences, summerhouses, terraces, steps and balustrades, dovecotes, garden vases, grottoes and ruins. Also, many larger houses especially in rural areas had extensive picking or kitchen gardens. Many of those surviving are now under threat, because they are no longer needed and take a lot of up-keep.

Lester concluded his talk with a discussion of the value of old photos for finding details of early gardens, especially portraits or family groups, where the garden figures as the backdrop. From his involvement with the Marrickville Heritage Study, he was able to highlight the importance of Marrickville, an area which has (or had) examples of all architectural and garden types, because of the sequence of development along the railway lines and in subdivision pockets. He singled out Petersham Park, with its palms and memorial avenue of brush box, as especially important, and reminded us of the heritage value of small and often overlooked items such as stonework along garden and road edges.



ANIMALS AND VEGETABLES

On Tuesday 27 August and again on Tuesday 10 September, some 72 members of the Society were entertained in the dining-room at **Parliament House** by **Dr Andrew Refshauge**, MP, Member for Marrickville and Deputy Leader of the Opposition. Parliament House is built around the 1815 surgeon's quarters of **Governor Macquarie's Rum Hospital** and the photographic display in the old Parliamentary Library shows the restoration of the old buildings, including the 1870s colour scheme painstakingly uncovered under many layers of white and cream paint, and the reweaving of carpets to the original patterns.

After dinner, Dr Refshauge described both his achievements and disappointments in parliament and we then had the opportunity to visit the public gallery for part of a spirited debate in the Lower House, often described as the "bear pit" of NSW politics. When questioned about the behaviour of some of the parliamentarians, Dr Refshauge quoted a parliamentary colleague who said he left the 'animals' to join the 'vegetables' when he moved from the Lower to the Upper House! We concluded the evening by visiting this rather more refined parliamentary chamber.

Our thanks to Dr Refshauge and his secretary, Heritage society member Pat Clarke, for arranging two splendid evenings. -- Geoff Ostling



Birthday Concert

Congratulations to Heritage Society member **Lyn Greenwood** who celebrated her 50th birthday with a special Sunday afternoon concert performed by her many friends in the musical world on 18 August. Ashfield Town Hall was crowded with well-wishers including our oldest member, Amy Needham, who at age 101 was making a rare public appearance.

GROW YOUR OWN HERITAGE WITH PLANTS FROM

SHRUBS AND TUBS GARDEN CENTRE

130-136 New Canterbury Road Petersham

And the **NEW LEICHHARDT GARDEN CENTRE**

346-350 Norton Street Leichhardt




***** OPEN 7 DAYS *****



OLD TOWN HALL - UPDATE

Advertisements for the sale or lease of the old **Marrickville Town Hall** in Illawarra Road, "under instructions from the Department of Housing" have appeared in newspapers recently. The ads refer to a "building steeped in history" with "tremendous scope for adaptive re-use", but make no mention of the Permanent Conservation Order on the building, nor its classification by the National Trust. The condition of the building continues to deteriorate and the lion statues, stolen almost a year ago, have not been recovered or replaced. We'll keep you posted.

Reshape History



Under instructions from
Department of Housing

EXPRESSIONS OF INTEREST
are invited from builders and
developers to purchase or
lease this unique property
located in Marrickville, the
site offers:

- about 1600m² of land
- an exceptional 200m²
building steeped in history
- tremendous scope for
adaptive re-use
- ideal premises for
professional, educational
or community groups.

For further details contact:
Geoff Coggins or Tom Akkerman
55 Harrington Street, Sydney.
(02) 233 2244

**Raine & Horne
Commercial**

FRIENDS OF ST STEPHENS, NEWTOWN

The famous Edwin Blacket church and cemetery at **St Stephens, Newtown**, is in need of restoration, repair and maintenance. St Stephens is often described as the finest of all Blacket's parish churches - it is a design of his maturity, rich in beauty; it is complete in every detail, and is remarkable intact, having changed very little since the 19th Century. It has an **1873 Walker organ**, and a carillon played on Sundays and special occasions. Its setting is idyllic, the lovely spire rising beside the spreading branches of a 140 year old fig tree, and is surrounded by an historic cemetery. The whole precinct is more than an historic monument and a place of the dead; it is a living church within a living park, loved and used by the people of Newtown, and part of the heritage of all Australians.

Friends of St Stephens is a new group formed to further the conservation of the church and its surroundings. If you are interested in joining or helping in any way, contact Tamsyn Taylor, 559.3839 (home) or 217.0502 (work, from 1-5pm).

Auditor Needed!

The Society's Honorary Auditor, **John Watkins**, has resigned because he has taken up a position in Porgera, Papua New Guinea. We thank John for his help in the past, and wish him the best of luck in his new career. The Society now needs a new auditor, so if you can help or if you know of anyone who might be interested, please contact the treasurer, Paula, on 569 9928.

Condolences to the family and friends of Society member, **Sam Kakaivalu**, who died recently.

Classifications and Heritage Watch Report

Central Sydney Heritage Inventory

Over 40 notable Sydney buildings will lose their Heritage status due to reclassifications by **Sydney's Central City Planning Committee**, according to pro-heritage architect **Ian Stapledon**. The committee has accepted the recommendation of a sub-committee to delete 44 items, including some famous landmarks, from the Central Sydney Heritage Inventory.

Stapledon, writing in the National Trust Quarterly July issue, states that buildings deleted include George Patterson House in George St, early premises of *The Bulletin*, Dymocks Building, the former QANTAS building in Chifley Square, and the Agincourt Hotel, a Victorian pub at Central. As well, the recommendations reduce a number of buildings to facade significance only, including the State Emergency Services Building, a superb late Victorian brick and stone warehouse with intact hardwood structures inside, other warehouses in Clarence and Kent streets, and the Archway Terrace, an ornate row of Victorian Italianate shops and offices in Market St.

The criteria used by the committee appear to include such questionable issues as the building's present condition, and the owner's potential financial hardship. Stapledon says that "to link the historical significance of a building with an owner's claim to suffer financial loss should the building be preserved, virtually nullifies the value of such a list". Such attitudes sit oddly with recent suggestions to remove the Cahill Expressway, and the stand taken against CML's wildly out-of scale development proposal for Circular Quay East. - David Hilyard, Classifications Committee.

Bus-drivers Needed!

Are there any bus-drivers out there, or at least members with a licence to drive a bus? We would be grateful for any volunteers who would be prepared to drive a bus on the Society's excursions. Contact Judith on 560 1751.

New Members

Mr R. and Mrs I. Buntine, Stanmore; Stanley Victor Catts, St Pauls; Julie Ann Kendrick, Tempe; Colin Hesse, Marrickville; Peter McLaren, Petersham; Maureen O'Conner, Marrickville West; Margaret Phillips, Bateau Bay; Cathy Quain, Petersham; Andrew Serafin, Stanmore; R.A. and B.J. Zimmerman, Stanmore; Australia Street Stained Glass and Leadlight, Camperdown; Newtown High School of the Performing Arts, Newtown.

HOW TO SUBSCRIBE

It's only \$12 for individuals, \$18 for households and institutions and \$6 for students and pensioners. You will receive copies of our Newsletter (either posted or delivered

to your door) and our journal *Heritage*. Your subscription is valid for the Society year from 1 July each year. The Society holds regular meetings on the fourth Saturday of each month. Write to PO Box 415 Marrickville 2204.

23 CANDIDATES RESPOND POSITIVELY TO MARRICKVILLE HERITAGE SOCIETY QUESTIONNAIRE

Marrickville Heritage Society polled all candidates in the forthcoming Marrickville Council Elections (September 14) on 10 important heritage questions.

Of the 56 candidates, 23 responded positively by the due date.

18 CANDIDATES ANSWERED YES TO ALL 10 QUESTIONS
4 CANDIDATES ANSWERED YES TO 9 QUESTIONS
1 CANDIDATE REPLIED BY LETTER

The 18 candidates who responded **YES** to all 10 questions were:

HENSON WARD	NEWINGTON WARD	RIVERSIDE WARD
John Blackall *	Sonia Lavery	Allan Coote
Jean Hartman **	Paul Oliver	Denice Hamid
Colin Hesse * **	Brad Robinson *	Sophia Koukides
Rob Muir *		Douglas Pereira *
Kathy Phillips		Simon Retsos
Mary Stewart **		Pauline Roach **
Kate Tippet		Frank Salter
Bruce Welch **		

The 4 candidates who responded **YES** to 9 questions were:

HENSON WARD	NEWINGTON WARD	RIVERSIDE WARD
Ben Giang	Don Elvy **	Rod Owens
(No to Q 10)	(Abstained from Q 6)	(Abstained from Q 8)
		Peter Rinker
		(No to Q 6)

One candidate (Alfred Hayes, * Henson Ward) did not answer the questionnaire but replied by letter that he is "heritage conscious".

* Provided extra comment on heritage issues.

** Members of Marrickville Heritage Society.

Compiled by Marrickville Heritage Society.
Judith Matheson
PRESIDENT.

QUESTIONNAIRE SENT TO ALL CANDIDATES IN THE MARRICKVILLE MUNICIPAL COUNCIL ELECTIONS

As an Alderman of Marrickville Municipal Council I will:

CIRCLE YOUR PREFERRED RESPONSE

1. Promote interest in and knowledge of the history of the Municipality?
(YES NO)
2. Encourage the identification and recording of sites and items of historic interest? (YES NO)
3. Support the establishment of special heritage zonings in a Local Environment Plan, to cover items identified in the Marrickville Heritage Study?
(YES NO)
4. Support the protection of specially valuable buildings by all means available, including conservation orders under the Heritage Act?
(YES NO)
5. Encourage owners to maintain and improve older properties in sympathy with the original appearance?
(YES NO)
6. So far as the powers of Council allow, oppose unsympathetic alteration or redevelopment of properties with heritage value?
(YES NO)
7. Are you prepared to use town planning controls to ensure that new buildings are of suitable scale and materials to be sympathetic to older nearby buildings?
(YES NO)
8. Will you take appropriate action to ensure that the Town Planning Department is fully staffed to facilitate both safeguarding the existing suburban environment and expeditious handling of suitable new development?
(YES NO)
9. Will you support regeneration of the Cooks River and protection of natural and open spaces in the Municipality?
(YES NO)
10. Would you support a programme to control street signs, advertising signs on buildings, street furniture so that the appearance of each suburb is, so far as is practicable, appropriate to its history?
(YES NO)