

MARRICKVILLE HERITAGE SOCIETY

Covering Dulwich Hill, Enmore, Lewisham,
Sydenham, Tempe and parts of Newtown,

Marrickville, Petersham, St Peters, Stanmore,
Camperdown and Hurlstone Park.



OUR LAST MEETING VISIT TO ROSE SEIDLER HOUSE

We may not have won many converts to Harry Seidler's brand of architecture but the 30 members and friends who attended our last excursion on March 28 all agreed that a visit to Rose Seidler House was a must. The consensus was that we did not want to live in the house built by the young Seidler as his first Australian commission, but it was fascinating to see the house that had caused so much controversy in the 1950s.

Curator Andrew Mitchell set the mood for the morning. He explained Seidler's desire to create a new style of architecture for Australian housing that would suit our life-style and climate. By introducing design and building concepts that were quite radical to our way of thinking - such as flat roofs, large expanses of glass, ramps instead of stairs, cantilevered construction, built-in cupboards and wardrobes and much more - Seidler made a name for himself in a country not known for architectural innovation. Our thanks to Andrew and the Historic Houses Trust of NSW for a memorable tour.

Our thanks also to John Ward and the Bus and Truck Museum who provided an Atlantean double-decker bus to take us to Wahroonga and back. The old bus created plenty of interest as we travelled through the suburbs and added a special enjoyment to the day.

Judith Matheson

COMING EVENTS

There is NO APRIL MEETING of the Society, since the fourth Saturday is Anzac Day. The concert at St Stephens replaces the April meeting.

BUS AND TRUCK MUSEUM TEMPE

Saturday 23 May

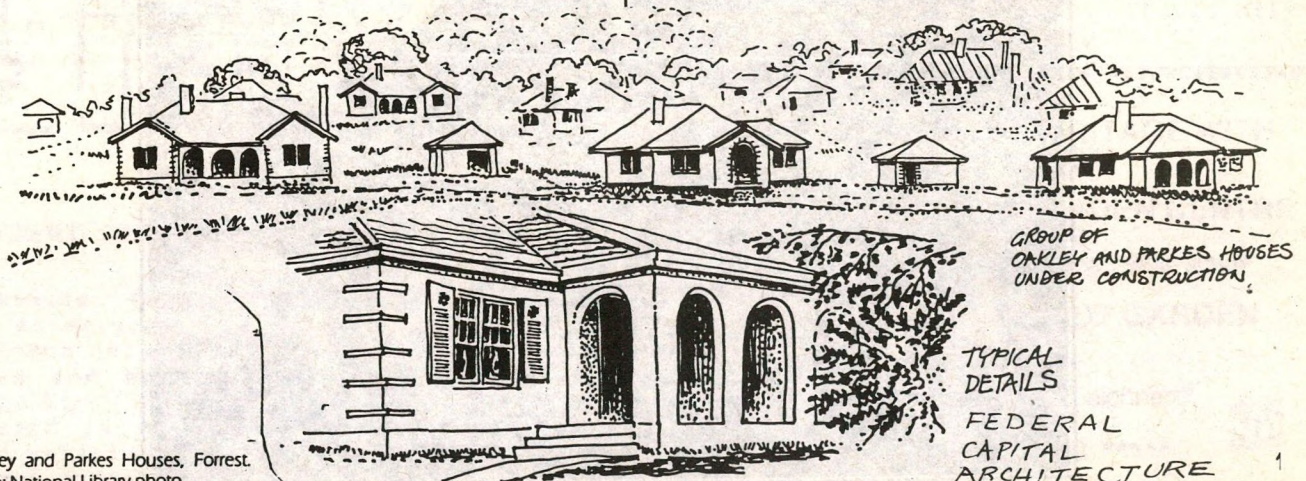
The May meeting will be an excursion to the Tempe Bus and Truck Museum. See the May Newsletter for information about times and transport.

VISIT THE ITALIAN RENAISSANCE EXHIBITION WITH THE SOCIETY

CANBERRA WEEKEND

Saturday 30 May - Sunday 31 May

A weekend trip to Canberra is being planned for the last weekend in May. The itinerary will include Rubens and the Italian Renaissance at the Australian National Gallery, the Nolan Gallery, Lanyon, and Calthorpes Cottage, a marvellous 1920s house museum. Accommodation is at the Canberra Rex. The cost, at \$100 for bed and breakfast (does not include other meals) and entry to the Rubens exhibition, is a bargain. Please contact Geoff Ostling on 568.3029 (h) as soon as possible if you are interested. Numbers are limited to 20.



Oakley and Parkes Houses, Forrest.
From: National Library photo.

HERITAGE WEEK

Hidden Cultural Heritage Bus Tour Sat 2 May

Heritage Week will be held from 26 April to 3 May with the theme Hidden Heritage. As part of the local program there will be a bus tour of the Marrickville Municipality's Hidden Cultural Heritage on Saturday 2 May.

The tour will leave Marrickville Town Hall at 9.30am and return at 11.00am. It will be followed by a tour of Marrickville Municipal Library's art stack collection. People are also welcome to just join the "art tour" at 11.00 am.

Bookings are necessary. Please contact Chrys Meader, Local Studies Librarian on 335.2170 for bookings and further details.

DISCOVER YOUR HIDDEN MUSICAL HERITAGE

CONCERT ST STEPHENS CHURCH, CAMPERDOWN 2 pm on Sunday 3 May

Contrary to an inscription on his grave in Camperdown Cemetery, the beautiful music of Napoleon's harpist Nicholas Bochsa will be heard once again when it "floats" through historic St Stephen's Church in Newtown. Members of the Sydney Harp Ensemble will play Bochsa's music on Sunday 3 May, at a concert hosted by the Marrickville Heritage Society to celebrate Heritage Week.

Discover Your Hidden Heritage is a fitting theme for the concert as it will not only feature an impressive program of local musicians and performers, including the renowned Newington Chamber Choir, it will also feature the music of two celebrated musical characters who are buried in the adjacent cemetery.

Nicholas Bochsa was at one time Napoleon's harpist, but accused of forgery, he fled to England where he joined the Royal Academy of Music. In 1839 he ran away with one of his star pupils, opera singer Mrs Anna Bishop, and they toured the continent and the US. They arrived in Australia in 1855, but after only one concert Bochsa died. Anna erected a monument to Bochsa with the words:

*"Mourn him - mourn his harp- strings broken,
Never more shall float such music,
None could sweep the lyre like him."*

To commemorate Bochsa, the Sydney Harp Ensemble will bring his music, at least, back to life with a recital of some of his works.



Also buried at Camperdown is Isaac Nathan, who is credited as being Australia's first composer. Another romantic character (he was wounded in a duel over his mistress Lady Langford) he arrived in Australia in 1841 after an illustrious career in Britain. He conducted the first concert of the Australian Philharmonic Society in 1844 and produced the first Australian opera, curiously titled "Don Juan of Austria" in 1847. Nathan died in 1864 after a tram accident. Selected pieces by Nathan will be performed at the concert.

Other performers will include church organist Gary Rodgers, Stanmore residents Michelle, Tristan and Luke Linton-France, and Petersham resident Michael Hissey, a vocal soloist.

If you can help on the day please call Sue on 519 9980.

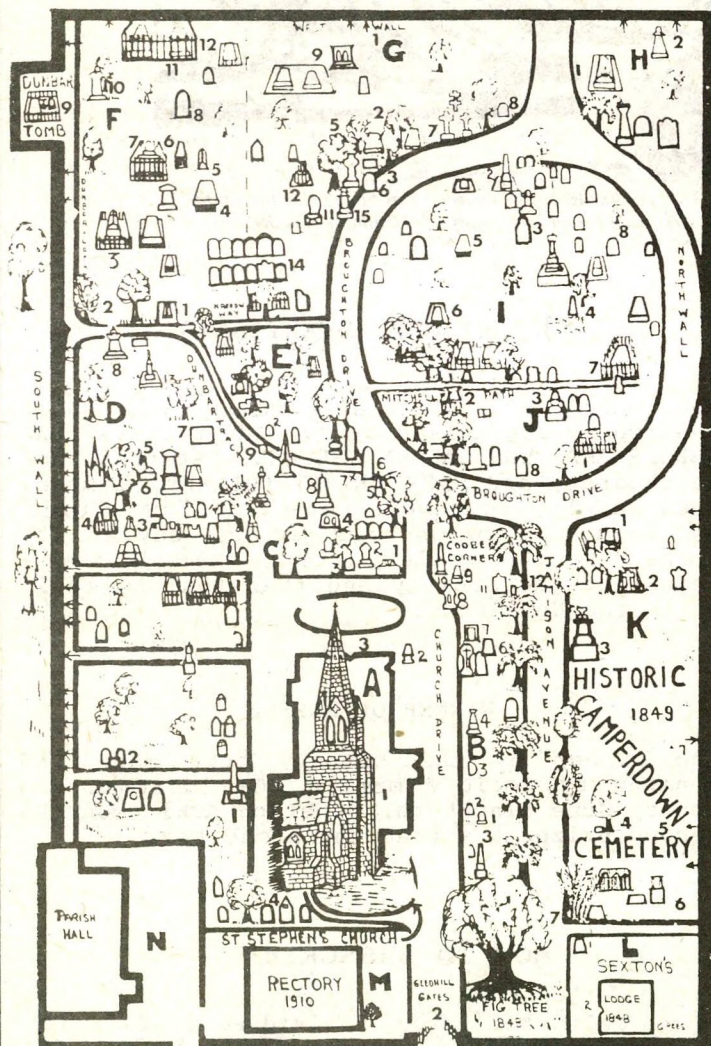


The grave of Nicholas Bochsa, Napoleon's harpist (Photo: Newtown Bridge)

St Stephens Church is regarded by most experts as the greatest parish church built by our greatest builder of churches, Edmund Blacket, who built more than 100 churches including three cathedrals. It was built in the early 1870s in the grounds of Camperdown Cemetery, its beautiful stone spire dominating the surrounding area. While the church is complete and remains largely intact, with a wonderful 1873 Walker organ and a carillon, it has fallen into disrepair and needs urgent restoration work.

Admission to the concert is by donation and proceeds from the day will go to the St Stephens Restoration Fund and Marrickville Heritage Society. All musicians have kindly donated their services.

Explore historic Camperdown Cemetery after the Concert. A map of the cemetery's layout.



DEVELOPMENT CONTROLS FOR ABERGELDIE ESTATE

Marrickville Council has appointed James Liedis as strategic planner to develop Local Environment Plans and Development Control policies for heritage precincts within the municipality. The first precinct to be considered is Abergeldie Estate in Dulwich Hill, a relatively homogeneous development of inter-war bungalows which has been threatened in the past by unsympathetic developments.

BOTANY BAY AND THE THIRD RUNWAY

The Federal Airports Commission has released a draft of its Stage 1 Environmental Management Plan for Botany Bay. When the Commonwealth Government decided that the third runway would proceed, it stipulated that an Environmental Impact Management Plan for Botany Bay should be developed and put into effect. The plan is intended to look at how the construction and operation of the third runway will affect Botany Bay. Stage 1 covers the construction phase of the third runway which is intended to commence in mid 1992.

The FAC is calling for public comment on the plan. Copies are available from: Information Branch, NSW Department of Planning, Ground Level, 175 Liverpool Street, Sydney or First Floor, 23 Frederick Street, Rockdale; and Federal Airports Commission, Level 2, 414 Gardeners Road, Rosebery. The 21-day "consultation" period closes on April 14 1992. Comments should be addressed to Manager Technical Service, Federal Airports Commission, PO Box 63, Mascot, NSW 2020. The Marrickville Heritage Society will make a short submission on the heritage aspects of the plan.

TERRACE HOUSES CLASSIFIED BY NATIONAL TRUST

The National Trust, whose mills grind slowly but exceedingly small, has classified a row of terrace houses at 171-177 Victoria Road, Marrickville. The original proposal to classify these houses was made by the Classifications Committee of the Society in 1988. The houses were described in the Society's submission as simple, double-fronted working-class houses, probably built between 1860 and 1870. They are constructed of sandstock brick, originally with corrugated iron roofs. Number 175 is the house in most original condition.

This terrace represents one of the few remaining groups of early houses in Marrickville Municipality. The land was one of the original subdivisions, and most of the houses in the area have now been replaced by industrial development. This group is typical of housing in the inner Sydney area prior to the 1890's.

David Hilyard

GROW YOUR OWN HERITAGE WITH PLANTS FROM

SHRUBS AND TUBS GARDEN CENTRE

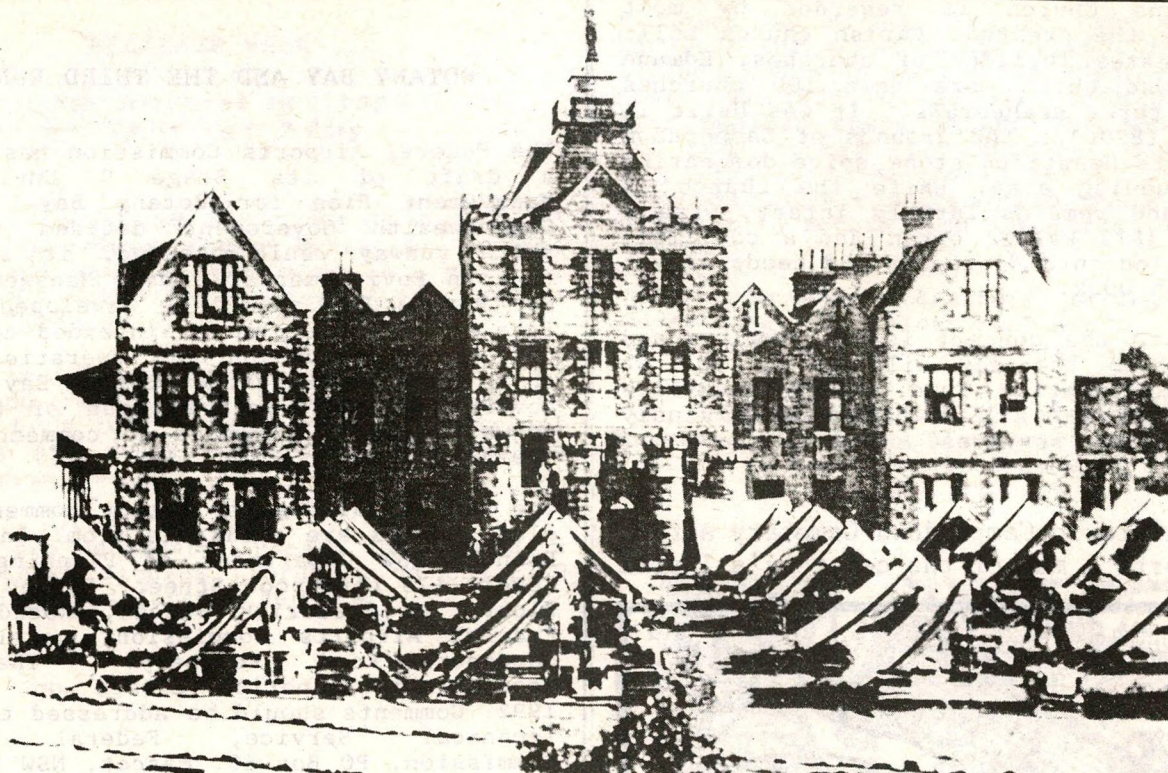
130-136 New Canterbury Road Petersham

And the NEW LEICHHARDT GARDEN CENTRE

346-350 Norton Street Leichhardt

***** OPEN 7 DAYS *****





"THE WARREN", BUILT BY THE HON THOMAS HOLT, MLA, IN THE 1830s. Holt's mansion was bought for the Carmelite Nuns (now in Wardell Road) in 1884. During World War I the grounds were used for an army camp. The building was demolished in the early 1920s.

"THE WARREN" TO BE OFFICIAL

We have all used the name "The Warren" for the locality in Marrickville Municipality, probably without realising that this name was not officially blessed. Now the Geographical Names Board is proposing to formally recognise the name for the area bounded by Marrickville Railway Station, Illawarra Road, Cooks River and Carrington Road. The Board adds that the name would not be used for administration or addresses, and that the correct address for any property within the locality would still be Marrickville. Public comment will be sought before the name is gazetted.

Richard Cashman and Chrys Meader, in *Marrickville - Rural Outpost to Inner City*, report that the name comes from the 130 acre estate of Thomas Holt, a wealthy pastoralist, and the house he built on this site between 1864 and 1866. "The Warren" was a grand mansion of 30 rooms, built of stone quarried on the property. Rabbit-breeding was one of Holt's hobbies, and the original 60 rabbits he introduced bred prolifically becoming pests. This may have been the origin of the name of the estate.

Holt returned to England in 1883, and the estate was subdivided, with the house and 12 acres occupied by the Carmelite nuns. In World War I the house was used as an artillery camp by the 7th Field Regiment. After the war the house was demolished and the estate subdivided for soldier resettlement.



MISSING after the Society Christmas party: one large, oval meat dish, blue with gold trim *Bleu de Roi* design. Sentimental value. Any information, contact Joan Francis 798 9099 (w), 713 8611 (h)

SUPPORT OUR ADVERTISERS

The cost of the Newsletter has been generously subsidised by two advertisers, the **SHRUBS AND TUBS GARDEN CENTRES**, Petersham and Leichhardt, and **MARY REIBEY GALLERY**, Enmore. When you buy your next pot-plant from Shrubs and Tubs, and browse and (maybe) buy an art work from the gallery, tell them you're a member of the Society and that you saw their ad in the Newsletter!

WINNER OF RAFFLE

The winner of the pottery bowl made and donated by Society member Jean Hartman was won by June Blackburn. Jonathon Atkin won the second prize, a potted Christmas tree.

HOW TO SUBSCRIBE

It's only \$12 for individuals, \$18 for households and institutions and \$6 for students and pensioners. You will receive copies of the Newsletter (either posted or delivered to your door) and the journal *Heritage*. Your subscription is valid for the Society year starting 1 July. Regular meetings are held on the fourth Saturday of each month. Write to PO Box 415 Marrickville 2204.

Send Newsletter contributions to Editor Jeannette Hope, PO Box 702, Marrickville, 2204, phone or fax 559 1431. Suggestions, notes, quotes, drawings, photos, cartoons, newspaper cuttings, coming events all welcome.