

MARRICKVILLE

HERITAGE SOCIETY

Covering Dulwich Hill, Enmore, Lewisham,
Sydenham, Tempe and parts of Newtown.

Marrickville, Petersham, St Peters, Stanmore,
Camperdown and Hurlstone Park.



OUR NEXT MEETING

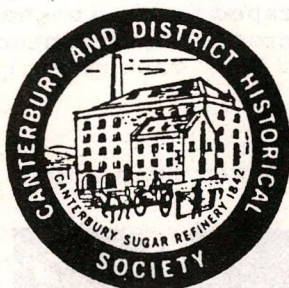
OUR WESTERN NEIGHBOUR - CANTERBURY MUNICIPALITY

10.30 am Saturday 23 August

Petersham Town Hall

At our next meeting Lesley Muir and Brian Madden, Vice-Presidents of the Canterbury and District Historical Society, will take us exploring (by slides and a talk) an area adjoining our own Municipality. Hopefully, they will tell us how Punchbowl got its name, why many of the streets of Riverwood have American names, the latest bid to save the Towers, Belmore (as reported in the March Newsletter) and where on earth are Harcourt and McCallums Hill!

Canterbury has a very rich history - here is our chance to hear of it. Our speakers are very well qualified to tell us Canterbury's story: Brian is a Councillor of the Royal Australian Historical Society and Lesley is a member of the Affiliated Societies Committee of the RAHS.

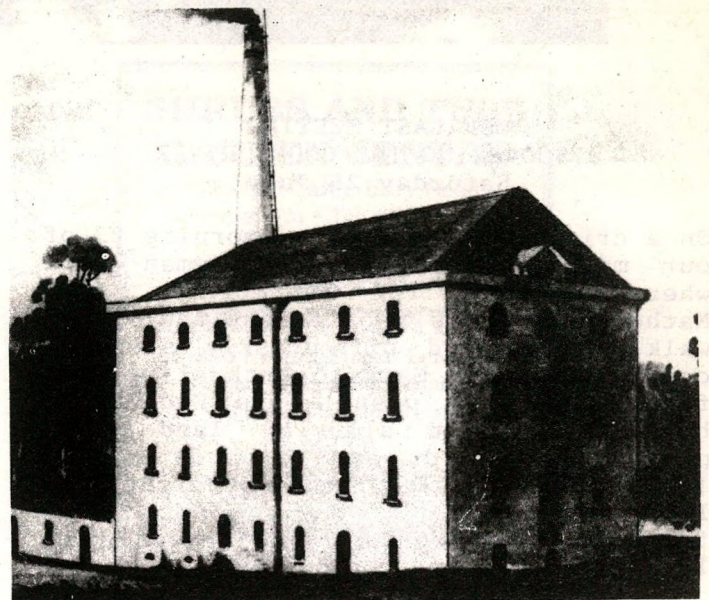


MARY REIBEY INTERIORS AND GALLERY

ANDREW TAYLOR
"TIMBER ICONS"
18 August - 6 September

OPENING Tues 18 August 6-8pm
All welcome to join the artist for drinks

224 Enmore Road Enmore
516 4902
11-4 Wed Sat Sun
11-7 Thurs Frid

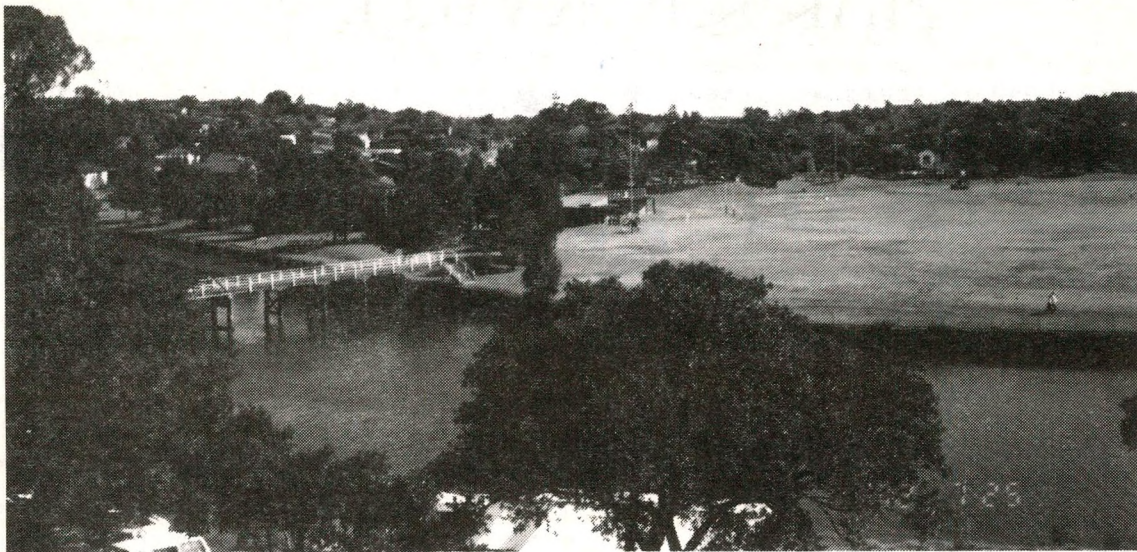


The Sugar Works, Canterbury, circa 1848

MARIE-LOUISE HAIRDRESSING SALON

The shopfront of the Marie Louise Hairdressing Salon at 135 Enmore Rd, Enmore, has been classified by the National Trust. The original proposal to classify this 1930s shop-front was made by the Society's Classification Committee during Terry Hick's Chairmanship. It is significant because it is a rare well-preserved example of Moderne Style with strong Art Deco elements. The shopfront is faced with large vitreous enamelled steel panels in pink and lilac (you can't miss it!).

The shop windows curve into a central door recess flanked by panels to give a column effect. The design is thought to be by the shopfitters, H. & E. Sidgreaves, who installed the windows; their metal nameplate is on the stainless steel window moulding. The Marie-Louise Salon is featured in Art Deco Marrickville by Judith Matheson in Heritage 7. Shirley Hilyard



Looking across Cooks River
from 18th tee, Marrickville
Golf Course 25/7/92

OUR LAST MEETING DISCOVERING THE COOKS RIVER Saturday 25 July

On a crisp, sunny winter's morning 23 of our members gathered at Beaman Park where our guide for the morning, Mark Matheson, gave us a brief outline of our walk. We started off briskly stopping occasionally for Mark to enthral us with facts about the past - the Federation homes, the flat alluvial land which produced vineyards and orchards in the 1920's. previously large stretches of land covered by floods, and not to be forgotten, the World Scout Jamboree in 1912.

As we wended our way through Marrickville Golf Course we, stood under the Fig Tree that was part of the Nobb's family farmyard, and learnt that it was originally on the other side of the river, before the flow was straightened in 1943. Nobbs Flat was also the scene of immensely popular (but illegal) Bare Knuckle Boxing Bouts in the mid-19th century.

So on to Steele Park which is reclaimed wetland, and nearby we saw the massive Viaduct which contains the sewerage of much of Sydney's southern suburbs. Also nearby we noted in the rocky cliff the Burial vaults of the Holt Family (although never used). The Holt family lived in a large 30 room mansion on the hill - today only two gate-posts remain. Thomas Holt was a property developer, parliamentarian and co-founder of the AMP Society.

So on along the river bank to the River Canoe Club, the oldest club in NSW, and just a little way past, we came to the junction of the Cooks River and Wolli Creek. History tells us that Captain Cook came up the river to this point. In those days it was a wetland area, but has now been drained, and since 1975 has been landscaped and is now known as Gough Whitlam Park and Wentworth Park.



Shirley Hilyard makes a point!
Cooks River Tour 25/7/92

From this stop we could see Tempe Rail Station. We all settled down for a picnic lunch, and then some returned home on the train, and others returned by foot along the path back to our starting spot. The tour was a great experience and made us all realise we have a River to be proud of in our area, and we heartily commend the authorities who have been responsible for the beautification of this natural heritage. Joan Swain

**CRAFT AND SPECIAL INTEREST EXPO
ST PETERS CHURCH
Saturday 5 September 1.30 - 4.30 pm**

Lacemakers of Calais will be among other crafts featured at the Craft and Special Interest Expo to be held at St Peters Anglican Church, 187 Princes Highway, St Peters.

Marrickville Heritage Society will have a stall to promote the Society, and sell Heritage Jam. Members and friends are invited to come along. For further information ring Sue Miller on 519 9980.

**CAMPERDOWN CEMETERY CLEANUP GROUP
CLEANUP DAY
Sunday 23 August 10am - 1pm**

All moral and working support welcome - refreshments and encouragements provided. If you can lend a hand, just come along with your gardening gloves between 10 and 1. Meet near the Dunbar Tomb on the Lennox Street side of the cemetery. We are making big difference to the appearance of the cemetery but much still needs to be done. For information, ring Sue Miller on 519 9980.

HAVE YOUR HOUSE NAME CARVED IN CLAY

Does your house have a name? Even if it lacks one now, it probably did have a name originally. You may be able to find out what the name was by consulting the Sands Directories, now available on microfiche at the Mitchell and other libraries.

If you would like a new name plate for your house, Society member and potter Gwen Whitty can help you. She has been living in Marrickville Municipality for the past nine years and has authentically restoring a Federation (1903) house. Now she has added another dimension in presenting a house - with ceramic house name signs. There's a lot in a name!

The house names take approximately three weeks from making to the finished article. Design variables are taken into

consideration, along with colour and textual decisions. They measure 380 x 250mm, and are \$120 each. For more information, contact Gwen on 568 3707 or 560 9786.

Gwen works in a 160 sq m studio on her Dulwich Hill property, which was council approved some four years ago as an "artist's studio", and she has shared this area with three other potters. There's off-street parking and access to Johnson Park at the rear. The property is now for sale, and you can contact Gwen. An excellent opportunity to work at home.

**SHRUBS AND TUBS
GARDEN CENTRE**

130-136 Canterbury Road
Petersham • Tel: 560 3884

**LEICHHARDT
GARDEN CENTRE**

346-350 Norton Street, Leichhardt
(Lilyfield Road end of Norton St)
Tel: 560 0889



Old Fashioned Climbers and Roses
Cottage Garden Plants
Camellias, Azaleas
All Herbs

Terracotta Pots, Lattice
Everything to keep your garden healthy

SYDNEY 1842 - 1992

Who did design the Town Hall? Does anyone remember the old fish markets at Woolloomooloo? Why is Broadway broad? What did a blockboy do? What Sydney landmark was described as "a monstrous antique, an incongruity among the surrounding modern structures...the closest approach to a Hottentot mausoleum which Sydney architecture can offer"? Which ship was docked in Martin Place?

These and other questions are answered in a readable and entertaining fashion in Shirley Fitzgerald's sesquicentenary history of Sydney: *Sydney 1842-1992*, recently published by Hale & Iremonger. Copies are available from the Society at the bargain price of just \$30. Pick one up at the next meeting, or write to Box 415 Marrickville 2204.

POSTCARD FROM SAMOA

Gregory Robertson, an early active member of the Society and editor of *Heritage* 3, is now with the Australian Embassy in Samoa. He sends the following Postcard from Samoa:

For those new members of the Society, I should introduce myself as someone who has been involved and supportive of the Marrickville Heritage Society since its establishment, I still have my home in Petersham but am currently living in a small paradise called Samoa. I have been very busy since I arrived. I have taken up a diplomatic posting here as Second Secretary responsible for Australia's aid program to Western Samoa. This job has been particularly busy since I arrived given that the worst cyclone in 100 years hit the country a week before I did.

My busy job has not kept me from pursuing aspects of the culture and I currently edit the newsletter of the *O Mea Sina Society*, which is concerned with maintaining and preserving "all things beautiful" which is what the name means.

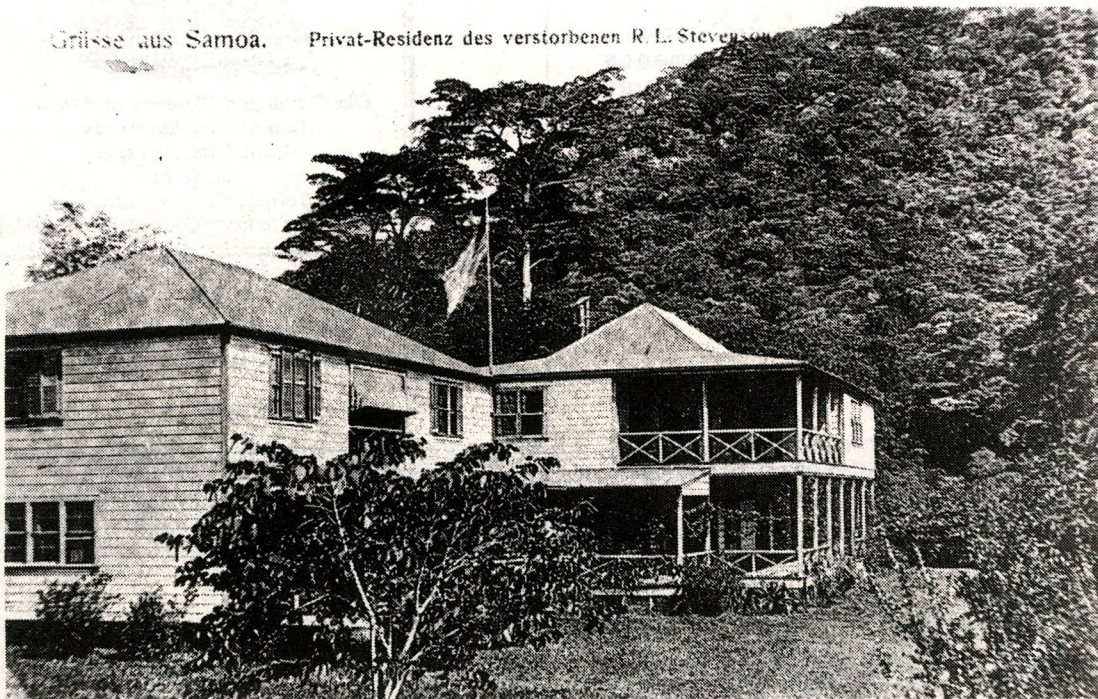
There is a very rich and interesting traditional culture focussing on singing and dancing. Handicrafts include woodcarving, the weaving of fine mats and Tapa making. The traditional culture has been overlaid during the colonial period with many other interesting aspects. There are many fine old German buildings and houses in the capital, Apia, as well as a very rich endowment of beautiful churches. The home of Robert Louis Stevenson is at Vailima and is currently undergoing renovation in time for the 100th anniversary of his death here in 1894.

From my home, 1000 feet above the Pacific, I look directly across to the small white tomb where Tusitala, or the "teller of tales" as he was known, is buried. He was held in such esteem that the high chiefs of the island built the path called the "Track of Loving Hearts" up the mountain to his burial site.

This country is rich in natural beauty, a verdant landscapes, dramatic waterfalls and soft grey and apricot sunrises as well as a rich and varied heritage. I feel very strongly that whether a person lives in Petersham or Samoa there are always things of beauty to value and preserve for the future.

Gregory Robertson

Griese aus Samoa. Privat-Residenz des verstorbenen R. L. Stevenson



HOW TO JOIN THE SOCIETY

Membership is \$12 for individuals, \$18 for households and \$6 for students and pensioners. You will receive a monthly newsletter (except in January) and the Society's annual journal *Heritage*. Subscriptions are valid for the Society year starting 1 July. Regular meetings are held on the fourth Saturday of each month. Write to PO Box 415 Marrickville 2204.

NEWSLETTER CONTRIBUTIONS

Send Newsletter contributions to Editor Jeannette Hope, PO Box 702, Marrickville 2204; phone or fax 559 1431. Letters, suggestions, quotes, drawings, photos, cartoons, newspaper cuttings, coming events - all welcome.