

MARRICKVILLE

HERITAGE

SOCIETY

Covering Dulwich Hill, Enmore, Lewisham,
Sydenham, Tempe and parts of Newtown,

Marrickville, Petersham, St Peters, Stanmore,
Camperdown and Hurlstone Park.



CALENDER OF EVENTS

1992

TUESDAY DECEMBER 15, 7PM POT LUCK CHRISTMAS DINNER

If you haven't booked up for this annual feast phone Pamela on 569 0820 A.H. or 568 0259 B.H. who will give you the address of the venue. Bring a plate and BYO drinks. 7PM for dinner at 8PM.

WEDNESDAY DECEMBER 30, 5.45PM EVENING HARBOUR CRUISE

Still a few places for the harbour cruise on the yacht Silver Spray. Evening picnic on Clark Island. BYO food and drinks. Send your cheque for \$20 to Anne Carolan 417 4862 - it is a memorable night. Meet at Man-O-War steps (east side of Opera House) at 5.45pm. We sail at 6pm sharp.



1993

SATURDAY FEBRUARY 27

Society member Peter McLaren, whose work as a heritage architect takes him to Norfolk Island, will tell us of the connections between that part of NSW - postcode 2899 - and parts of Marrickville. Mark it in your diary.

SATURDAY MARCH 27

Did you know that some of the beautiful villas of Woolloomooloo Hill (Potts Point) are now naval establishments? We can be thankful for this otherwise they may have been replaced by flats. Instead we have some hidden treasures that will be revealed to us by Jack Gibbs, civilian foreman, of HMAS Kuttabul. Details of this excursion in the February newsletter.

SATURDAY APRIL 24

Guest Speaker. To be announced

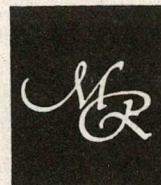
SUNDAY MAY 23

Heritage Concert at Newington Chapel

SATURDAY JUNE 26

Annual General Meeting

Mary Reibey
Interiors &
Gallery



224 Enmore Road
Enmore NSW 2042
Australia

Telephone
(02) 516 4902

CHRISTMAS BRUNCH

11AM SUNDAY DECEMBER 13

EXHIBITION CLOSES DECEMBER 24

For the occasion we have decked the gallery in a
comprehensive selection of prints by:

Lloyd Rees * Donald Friend
John Olsen * Clifton Pugh
Frank Hodgkinson * Brett Whiteley
John Coburn * Sidney Nolan
Ena Keese * James Willebrant
Chris Millward

A HERITAGE CHRISTMAS PRESENT

The long awaited reprint of Heritage 1 and Heritage 2 is available now. The two issues have been combined and reprinted with a smart new cover, featuring historic photos of Fowlers Pottery at Camperdown. The reprint contains the late Gary Nicholls excellent articles on Fowlers Potteries. There are also articles on local shops, cemeteries, early pioneers of the district, pubs, Cook's River and the history of the Winged Victory. Buy a copy to complete your set of Heritage journals or buy friends and family a copy for Christmas. Available at the Pot Luck Dinner or phone Shirley on 569 1768.



MERRY CHRISTMAS

This is our last newsletter for the year. The executive of the Society would like to wish all members a happy Christmas and a safe and prosperous new year.

OUR LAST MEETING ST STEPHENS CHURCH AND CEMETERY TOUR

On Saturday November 28 Dr Joan Kerr told a fascinated audience all about St Stephens - its planning, architecture and Edmund Blacket, the architect who designed this intact treasure in our midst. Dr Kerr addressed the "congregation" (a crowd of about 60, one of our best attendances this year-ed) from the pulpit.

We were fortunate to have the organist of the church, Garry Rodgers, present who played the organ very loudly as this was the purpose of this beautiful instrument. The case was designed by Edmund Blacket as was the pulpit, pews, sanctuary rails and font. We explored the church, saw the top stones of the spire that have been removed for safety and carefully stored in a porch and finally heard the stories of some of the people buried in Camperdown Cemetery. It was here we gathered for our Christmas picnic; Santa arrived on cue and the large number of members, their families and friends each received a present.

Our thanks to Rev Don Saines, Dr Joan Kerr, Garry Rodgers and Commander Brooks. -Shirley Hilyard

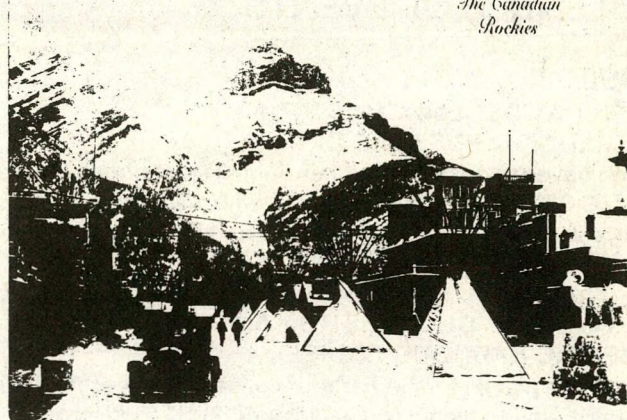
Carols at St Stephens Church Newtown on Sunday December 13 at 7.30pm. Carols at St Peters Church, St Peters on Friday December 18 at 6.30pm.

CHRISTMAS CAROLS

Carols by Candlelight presented by Camperdown Public School and Camperdown Residents Action Group on Monday December 14 at 8pm at Camperdown Park, Mallet St, Camperdown. Featuring the Burwood Brass Band. Song Book and Candle \$2 (Proceeds to Childrens Hospital, Camperdown) If raining, After School Activities Centre, 24 Australia St.

BANFF

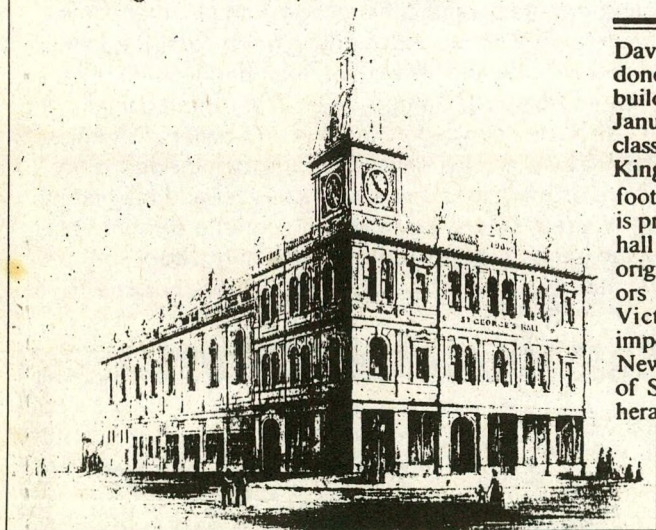
*The Canadian
Rockies*



CHRISTMAS IN CANADA

Our newsletter editor Jeannette Hope sends this postcard from Canada showing the Banff Winter Carnival in 1929.

St George's Hall, completed in 1887.



David Sheedy is an architect who has done much valuable work classifying buildings for the National Trust. Back in January 1979, he penned a proposal for classification of St George's Hall at 358 King Street, Newtown, with the following footnote: "After Sydney Town Hall, this is probably the largest surviving Victorian hall in Sydney retaining much of its original character. Its facades and interiors accurately reflect the exuberant late Victorian age and provide a most important focal point in the centre of Newtown. Restoration and preservation of St George's Hall would undoubtedly herald a rebirth of community activities in

this historic suburb." Sheedy's, and many other people's hopes, were realised some years back when this striking complex of shops and hall was occupied by the Newtown High School of the Performing Arts. The Public Works Department has started preliminary work on the building - the roof has been secured, a fire-prevention system installed and dance and theatre studios are expected to open late '94 but, like every other cultural institution in town, the school is looking for money. Ernie Tucker is the bloke to contact on 519 1544 if you'd like to invest in some of Australia's brightest young talent.

From Leo At Large, Sydney Morning Herald, Nov 21 1992.

SHRUBS AND TUBS GARDEN CENTRE

130-136 Canterbury Road
Petersham • Tel: 560 3884

LEICHHARDT GARDEN CENTRE

346-350 Norton Street, Leichhardt
(Lilyfield Road end of Norton St)
Tel: 560 0889



HOW TO JOIN THE SOCIETY

Membership is \$12 for individuals, \$18 for households and \$6 for students and pensioners. You will receive a monthly newsletter (except in January) and the Society's annual journal *Heritage*. Subscriptions are valid for the Society year starting 1 July. Regular meetings are held on the fourth Saturday of each month. Write to PO Box 415 Marrickville 2204.