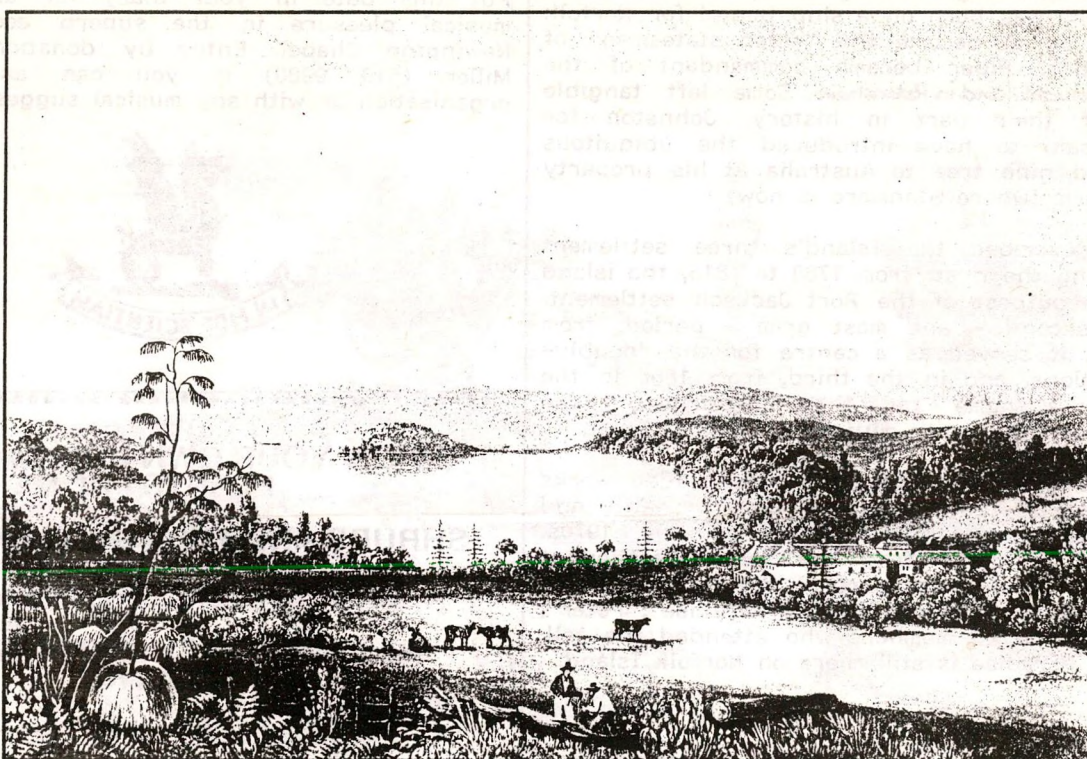


MARRICKVILLE

HERITAGE SOCIETY

Covering Dulwich Hill, Enmore, Lewisham,
Sydenham, Tempe and parts of Newtown,

Marrickville, Petersham, St Peters, Stanmore,
Camperdown and Hurlstone Park.



WOOLLOO-MOOLLOO AU PORT JACKSON
Hand-coloured aquatint after B. Lauvergne (Paris 1835) 28.8 x 38.2 cm

OUR NEXT MEETING

THE VILLAS OF WOOLLOOMOOLLOO HILL THE NAVY'S BEST KEPT SECRET

Saturday 27 March 10 am
at HMAS Kuttabul 14-18 Wylde St Potts Point

To usher in Heritage Week 93, again with the theme "Discover Your Hidden Heritage", we have planned a tour of Sydney's first suburb, Woolloomooloo Hill. It was established in the 1820s for the new elite of the colony, the civil servants who had need to be close to the town but who wanted to be separate from the common townspeople, the tradesmen and the retail merchants.

Today some of those beautiful villas on the Hill, now called Potts Point, are naval establishments. We will be guided on our easy walk by Jack Gibbs of HMAS Kuttabul. We will see Bomerah, Tarana, Jenner, Clarens Gardens and others. This tour is not to be missed!

John Palmer, purser on HMS *Sirius* in the First Fleet and then Commissary-General of the colony, was in 1793 granted 100 acres at the head of Woolloomooloo Bay, where a few years later he built Woolloomooloo House. It was one of Sydney's earliest permanent residences and became a centre of local society. Later, Palmer ran into financial difficulties and in 1816 was forced to auction the stock and furnishings of the property. This view is one of the last to show the valley in its early rural calm, for in the 1830s a graded carriage road named William Street was formed through the Vale of Woolloomooloo, ensuring its future development. Behind Woolloomooloo House and its farmlands are Woolloomooloo Bay, Garden Island and Potts Point.

How to get there: For our members without transport a small 22 seater bus will leave Petersham Town Hall at 9.30 am sharp. Bus returns to Petersham Town Hall approx. 3.30pm. Kuttabul is an easy walk from King's Cross Station, or catch the 311 bus from Central Square or Circular Quay. Bring a picnic lunch. Bookings Shirley 569 1768

OUR LAST MEETING NORFOLK ISLAND AND MARRICKVILLE

So there are links between Norfolk Island and the Marrickville area! On Saturday 27 February we found out about them, when Society member Peter McLaren gave his talk on the subject, illustrated with nearly a 100 slides. Peter told us about historical figures such as George Johnston, John Piper, W. C. Wentworth, Thomas Rowley and others, all of whom lived both in the area now within the Marrickville Municipality and on Norfolk Island, where most of them served as military officers. All were to a greater or lesser extent influential in the early days of the colony.

Johnston, for example, achieved fame as the officer who crushed the Irish rebellion at Castle Hill and who deposed Governor Bligh during the "Rum Rebellion". Wentworth, who was born on a ship bound for Norfolk Island, went on to become the "elder statesman" of colonial politics. Piper became commandant of the island and bought land in Petersham. Some left tangible reminders of their part in history. Johnston for example is said to have introduced the ubiquitous Norfolk Island pine tree to Australia at his property Annandale Farm (where Stanmore is now).

Peter also described the Island's three settlement periods. During the first, from 1788 to 1815, the island served as an outpost of the Port Jackson settlement. During the second - and most grim - period, from 1825 to 1855, it served as a centre for the "doubly-convicted" felons, and in the third, from 1856 to the present, as a home for the "Pitcairners", the descendants of the Bounty mutineers.

We also heard something about the conservation works being undertaken jointly by the Commonwealth and Norfolk Island governments since the early 1970s. Many of the buildings from the second settlement period still survive - reminders of the time when the penal settlement was called "hell in Paradise". Peter's slides showed the 45 members who attended the talk that a bit of Paradise is still there on Norfolk Island.

THOSE NORFOLK ISLAND - MARRICKVILLE CONNECTIONS

Well, what are the Norfolk Island - Marrickville connections?

* Major George Johnston's Annandale Farm at Stanmore had an avenue of Norfolk Island Pines believed to be the first planted in Australia. Johnston served for a time with the NSW Corps on Norfolk.

* W. C. Wentworth was born on a ship taking convicts to Norfolk. He later purchased an estate and lived in Petersham House, which stood on the site of Petersham Public School in Gordon St. He later moved to Vaucluse!

* Captain John Piper who served as Commandant of Norfolk Island from 1804-1810 also purchased land in Petersham and later moved to Point Piper!

* Thomas Rowley who was granted land that later became Kingston Farm, now Stanmore, was Commandant of Norfolk Island from 1799-1800.

* The Pitcairners were descendants of the Bounty mutineers, who deposed Captain William Bligh. Bligh was granted land which he called Camperdown when he arrived in Sydney to become the new governor in 1806.

COMING EVENTS

Saturday 24 April: JOHN HORBURY HUNT

Peter Reynolds will give us an insight into the life and times of John Horbury Hunt, one of the founders of the Institute of Architects in NSW. Hunt worked in Edmund Blacket's office from 11863-68. He designed the main buildings at the Convent of the Sacred Heart, Rose Bay, where his stone vaulted chapel is most admired, but he is perhaps best known for his brick masterpieces. Peter Reynolds is Master of the Horbury Hunt Club, which tours the countryside of NSW in search of Hunt's work.

Sunday 30 May: CONCERT NEWINGTON CHAPEL

Put this date in your diary for an afternoon of musical pleasure in the superb acoustics of the Newington Chapel. Entry by donation. Contact Sue Miller (519 9980) if you can assist with the organisation or with any musical suggestions.



GROW YOUR OWN HERITAGE WITH PLANTS FROM SHRUBS AND TUBS GARDEN CENTRE

130-136 New Canterbury Road Petersham

And the NEW LEICHHARDT GARDEN
CENTRE

346-350 Norton Street Leichhardt

***** OPEN 7 DAYS *****



THE AUSTRALIAN DREAM
Design and the Home of the 1950s
Powerhouse Museum until October

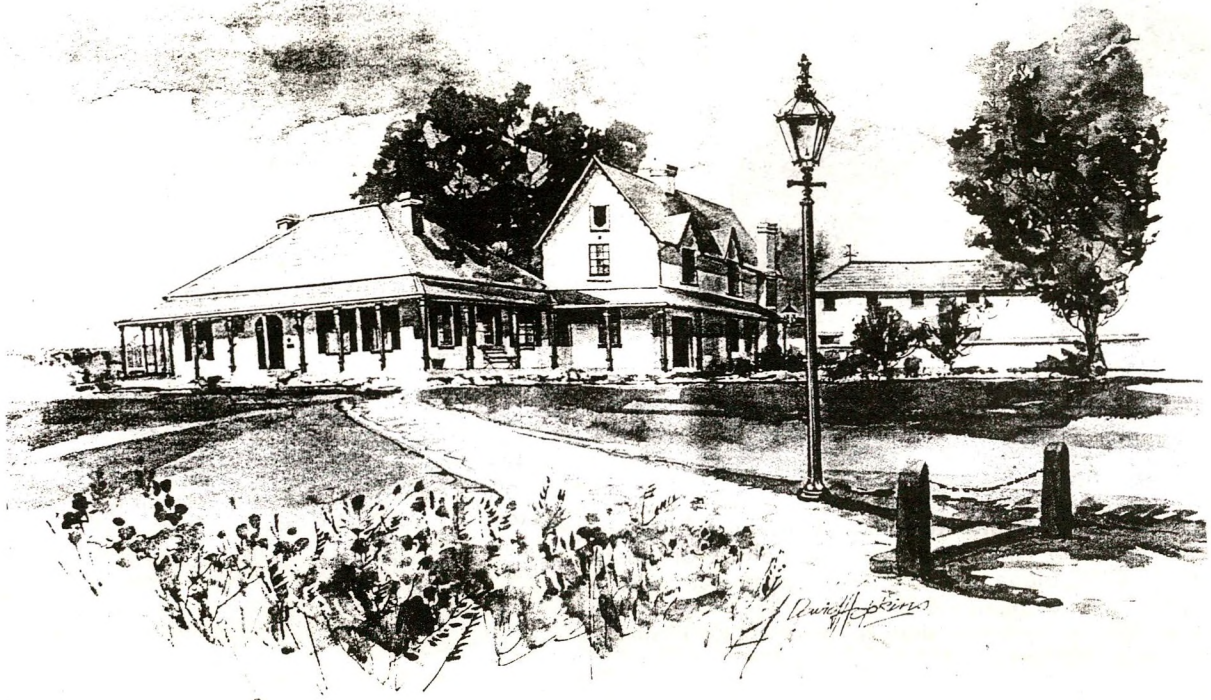
Take a fresh look at Australia in the 1950s, when a brand new home with all mod cons became the nation's dream. Presented in the style of a 1950s home show, the Australian Dream welcomes you back to the living rooms, kitchens and backyards where the baby boomers grew up.

AUSTRALIA'S FIRST SAINT

To commemorate the Beatification of Mary MacKillop, Australian artist Pamela Griffith has created a Commemorative Toile. Toile (pronounced twarl) is a single colour line drawing on cloth. The Commemorative Toile depicts 31 different scenes representing Mary's wide reaching ministry covering the length and breadth of Australia. The fabric will be available by the metre as well as made up in a range of tablecloths, cushions, place mats and wall-hangings. For further information contact the Mary MacKillop Secretariat, PO Box 1023 North Sydney.

CAN YOU HELP?

Deirdre Shaw of Frenchs Forest has written to the Society seeking information about her grandfather, Thomas Lawless, who lived in the area and owned several fruit shops, one in Stanmore Road. On another side of her family was William Shaw, a mayor of Marrickville (1884-7) whose house Lorelly was in Middleton Street, Petersham. Please phone Deirdre on 451 6903 if you can help her with her research.



POSTCARD FROM TASMANIA

Congratulations to Judith^{Matheson} and David Hilyard who were married on 6 February in Sylvia Hale's Garden, Petersham. The members of the Society gave them a silver soup ladle - they will surely think of us when they serve minestrone.

Judith and David visited Tasmania on their honeymoon, where they found another Marrickville Connection. "On our first day in Tasmania we found the Marrickville Connection". Entally House, Hadspen, near Launceston, is thought to have been built in 1819 by Thomas Haydock Reiby, the eldest son of Mary and Thomas Reibey of Sydney. Shipping interests brought Thomas Reibey to Tasmania as early as 1816.

Entally House (named after a suburb of Calcutta, India) was described in a press article of 1883 as "more designed for comfort than as a model for the

expositions of any particular canons of architecture." Mr Reibey's library was reported to be "perhaps the most extensive one in the colony." Entally House was opened to the public in 1950 and is justly proud of its magnificent collection of Regency furniture and fine silver ware. Set in superb grounds and gardens, Entally has a green house, chapel, coach house and stables open for inspection.

According to Judith, Entally House "is beautifully preserved and the gardens are superb - old-fashioned roses, huge dahlias and lavender hedges. David and I are like two kids in a candy-shop with all the Georgian architecture here. Forget Victorian, forget Federation - we are planning to emigrate and move into Clarendon House, a magnificent colonial mansion (as drawn by Hardy Wilson) in the "Gone with the Wind" style built in 1838."

Congratulations are also in order to our esteemed members Joyce and Les Fairbairn of Earlwood, who recently celebrated 50 years of marriage. The Fairbairn family reads like a "Who's who" of early Marrickville pioneers - Schwebel, Meek and of course Fairbairn.

DESPERATELY SEEKING DIANA?

Have you any unusual pieces of Diana pottery in the china cabinet, or hidden from view under the stairs?

Do you know anyone who worked at the Diana Potteries any time between 1940 and 1975?

If the answer to either of these questions is "yes", then Geoff Ostling would like to hear from you. Geoff, who is head of the History Department at the Open High School and a former president of Marrickville Heritage Society, is presently researching the history of Diana Pottery Pty Ltd which was situated at 122-126 Marrickville Road, Marrickville.



S12



S18

Diana Pottery was a small backyard cottage industry until the owners won the contract in 1940 to supply the war munitions factory canteens with crockery. From then on, business boomed.

After the war Diana began to produce vases and other decorative items for the home. At the height of post-war popularity of Diana pottery, more than 100 people were employed. Between 1946 and 1975, when the factory was forced to close down, up to 100,000 pieces were produced each year.

One of the specialities of the Marrickville factory were the Diana "welcome vases" which were placed on a nail in the wall near the front door and filled with flowers to welcome "the boys" when they came home from



S2 25/6 Pr.

World War II. According to the price list in the 1950 catalogue, the cheapest of these vases was only 3/6 (35c) and the most expensive 11/6 (\$1.15). Unfortunately these welcome vases were very easily chipped or cracked when they were taken off the wall and after 50 years, not many remain intact.

Some pieces were stamped on the bottom with the words "Diana Australia", but others just had a letter of the alphabet and a number stamped on the bottom and the words "Diana - Made in Australia" were on a gold or cream sticker attached to the side. The letter and the number identified the price of the item in the catalogue.



J7 12/-



J9 12/6

So far Geoff has been able to photograph quite a number of pieces made between 1947 and 1950, but has yet to see any of the crockery produced for the munitions canteens. He also has photocopies of the factory catalogues for the years 1947 and 1950 but would like to see the catalogues from other years if anyone has them. Obviously every care will be taken photographing these once cheap but now quite valuable pieces of Australian pottery.

At the end of his researches Geoff plans to publish an article in Heritage 8, the journal of the Society. The Society has recently republished the story of Fowler Potteries in the reprint of Heritage 1 and 2. The story of Diana should add considerably to the industrial history of the Marrickville area.

Geoff can be contacted at the Open High School on 809 8254 during school hours or at home on 568 302.



HOW TO JOIN THE SOCIETY

Membership is \$12 for individuals, \$18 for households and \$6 for students and pensioners. You will receive a monthly newsletter (except in January) and the Society's annual journal Heritage. Subscriptions are valid for the Society year starting 1 July. Regular meetings are held on the fourth Saturday of each month. Write to PO Box 415 Marrickville 2204.

NEWSLETTER CONTRIBUTIONS

Send Newsletter contributions to Editor Jeannette Hope, PO Box 702, Marrickville 2204, phone or fax 559 1431. Letters, suggestions, quotes, drawings, photos, cartoons, newspaper cuttings, coming events - all welcome.